

# ALTUS

DUBAI CREEK HARBOUR

---

FLOOR PLAN - TOWER 1

---

---

**AFS**  
REAL ESTATE  
STAY AHEAD, INVEST SMART

**db**  
DUBRICKS  
POSSIBILITIES ARE LIMITLESS

---

EMAAR

# ALTUS

DUBAI CREEK HARBOUR

TOWER 1

## 1 BEDROOM

PODIUM 01

UNIT 04

|              |               |             |
|--------------|---------------|-------------|
| SUITE AREA   | 761.12 SQ.FT. | 70.71 SQ.M. |
| BALCONY AREA | 61.25 SQ.FT.  | 5.69 SQ.M.  |
| TOTAL AREA   | 822.37 SQ.FT. | 76.40 SQ.M. |

KEY PLAN LEVEL  
PODIUM 01



KEY SECTION



Disclaimer : All dimensions are in imperial and metric, and measured from finish to finish excluding construction tolerances. 2. All materials, dimensions, and drawings are approximate only. 3. Information is subject to change without notice, at developer's absolute discretion. 4. Actual area may vary from the stated area. 5. Drawings not to scale. 6. All images used are for illustrative purposes only and do not represent the actual size, features, specifications, fittings, and furnishings. 7. The developer reserves the right to make revisions / alterations, at it's absolute discretion, without any liability whatsoever.

# ALTUS

DUBAI CREEK HARBOUR

TOWER 1

## 1 BEDROOM

PODIUM 02

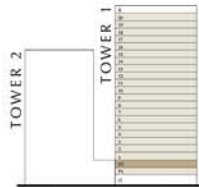
UNIT 04

|              |               |             |
|--------------|---------------|-------------|
| SUITE AREA   | 761.65 SQ.FT. | 70.76 SQ.M. |
| BALCONY AREA | 60.92 SQ.FT.  | 5.66 SQ.M.  |
| TOTAL AREA   | 822.57 SQ.FT. | 76.42 SQ.M. |

KEY PLAN LEVEL  
PODIUM 02



KEY SECTION



Disclaimer : All dimensions are in imperial and metric, and measured from finish to finish excluding construction tolerances. 2. All materials, dimensions, and drawings are approximate only. 3. Information is subject to change without notice, at developer's absolute discretion. 4. Actual area may vary from the stated area. 5. Drawings not to scale. 6. All images used are for illustrative purposes only and do not represent the actual size, features, specifications, fittings, and furnishings. 7. The developer reserves the right to make revisions / alterations, at it's absolute discretion, without any liability whatsoever.

EMAA

# ALTUS

DUBAI CREEK HARBOUR

TOWER 1

## 1 BEDROOM

LEVEL 02-20

UNIT 01

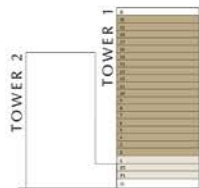
|              |                            |                         |
|--------------|----------------------------|-------------------------|
| SUITE AREA   | 603.86 to<br>603.96 SQ.FT. | 56.10 to<br>56.11 SQ.M. |
| BALCONY AREA | 60.71 SQ.FT.               | 5.64 SQ.M.              |
| TOTAL AREA   | 664.57 to<br>664.67 SQ.FT. | 61.74 to<br>61.75 SQ.M. |

KEY PLAN LEVEL

02-20



KEY SECTION



Disclaimer : All dimensions are in imperial and metric, and measured from finish to finish excluding construction tolerances. 2. All materials, dimensions, and drawings are approximate only. 3. Information is subject to change without notice, developer's absolute discretion. 4. Actual area may vary from the stated area. 5. Drawings not to scale. 6. All images used are for illustrative purposes only and do not represent the actual size, features, specifications, fittings, and furnishings. The developer reserves the right to make revisions / alterations, at it's absolute discretion, without any liability whatsoever.

EMAA

# ALTUS

DUBAI CREEK HARBOUR

TOWER 1

## 1 BEDROOM

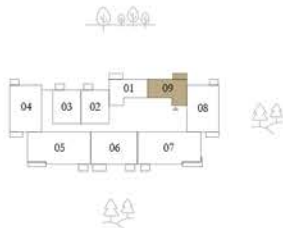
LEVEL 02-20

UNIT 09

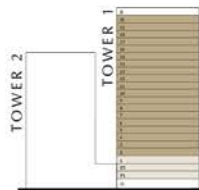
|              |               |             |
|--------------|---------------|-------------|
| SUITE AREA   | 610.31 SQ.FT. | 56.70 SQ.M. |
| BALCONY AREA | 60.71 SQ.FT.  | 5.64 SQ.M.  |
| TOTAL AREA   | 671.02 SQ.FT. | 62.34 SQ.M. |

KEY PLAN LEVEL

02-20



KEY SECTION



Disclaimer : All dimensions are in imperial and metric, and measured from finish to finish excluding construction tolerances. 2. All materials, dimensions, and drawings are approximate only. 3. Information is subject to change without notice, at the developer's absolute discretion. 4. Actual area may vary from the stated area. 5. Drawings not to scale. 6. All images used are for illustrative purposes only and do not represent the actual size, features, specifications, fittings, and furnishings. The developer reserves the right to make revisions / alterations, at its absolute discretion, without any liability whatsoever.

EMAA

# ALTUS

DUBAI CREEK HARBOUR

TOWER 1

## 1 BEDROOM

LEVEL 02-20

UNIT 02

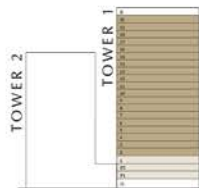
|              |                            |                         |
|--------------|----------------------------|-------------------------|
| SUITE AREA   | 686.41 to<br>686.63 SQ.FT. | 63.77 to<br>63.79 SQ.M. |
| BALCONY AREA | 42.19 SQ.FT.               | 3.92 SQ.M.              |
| TOTAL AREA   | 728.60 to<br>728.82 SQ.FT. | 67.69 to<br>67.71 SQ.M. |

KEY PLAN LEVEL

02-20



KEY SECTION



Disclaimer : All dimensions are in imperial and metric, and measured from finish to finish excluding construction tolerances. 2. All materials, dimensions, and drawings are approximate only. 3. Information is subject to change without notice, at developer's absolute discretion. 4. Actual area may vary from the stated area. 5. Drawings not to scale. 6. All images used are for illustrative purposes only and do not represent the actual size, features, specifications, fittings, and furnishings. The developer reserves the right to make revisions / alterations, at its absolute discretion, without any liability whatsoever.

EMAA

# ALTUS

DUBAI CREEK HARBOUR

TOWER 1

## 1 BEDROOM

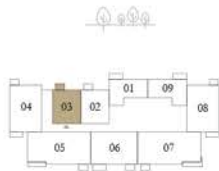
LEVEL 02-20

UNIT 03

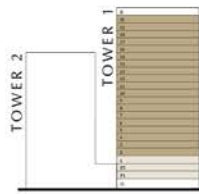
|              |               |             |
|--------------|---------------|-------------|
| SUITE AREA   | 703.64 SQ.FT. | 65.37 SQ.M. |
| BALCONY AREA | 42.19 SQ.FT.  | 3.92 SQ.M.  |
| TOTAL AREA   | 745.83 SQ.FT. | 69.29 SQ.M. |

KEY PLAN LEVEL

02-20



KEY SECTION



Disclaimer : All dimensions are in imperial and metric, and measured from finish to finish excluding construction tolerances. 2. All materials, dimensions, and drawings are approximate only. 3. Information is subject to change without notice, at the developer's absolute discretion. 4. Actual area may vary from the stated area. 5. Drawings not to scale. 6. All images used are for illustrative purposes only and do not represent the actual size, features, specifications, fittings, and furnishings. The developer reserves the right to make revisions / alterations, at its absolute discretion, without any liability whatsoever.

EMAA



# ALTUS

DUBAI CREEK HARBOUR

TOWER 1

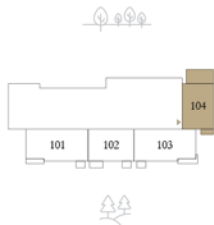
## 2 BEDROOM

LEVEL 01

UNIT 04

|              |                |              |
|--------------|----------------|--------------|
| SUITE AREA   | 1061.21 SQ.FT. | 98.59 SQ.M.  |
| BALCONY AREA | 347.46 SQ.FT.  | 32.28 SQ.M.  |
| TOTAL AREA   | 1408.67 SQ.FT. | 130.87 SQ.M. |

KEY PLAN LEVEL  
01



KEY SECTION



Disclaimer : All dimensions are in imperial and metric, and measured from finish to finish excluding construction tolerances. 2. All materials, dimensions, and drawings are approximate only. 3. Information is subject to change without notice, at developer's absolute discretion. 4. Actual area may vary from the stated area. 5. Drawings not to scale. 6. All images used are for illustrative purposes only and do not represent the actual size, features, specifications, fittings, and furnishings. 7. The developer reserves the right to make revisions / alterations, at it's absolute discretion, without any liability whatsoever.

EMAAR



# ALTUS

DUBAI CREEK HARBOUR

TOWER 1

## 2 BEDROOM

LEVEL 02-20

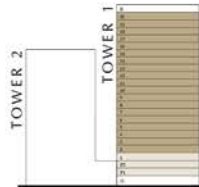
UNIT 08

|              |                |              |
|--------------|----------------|--------------|
| SUITE AREA   | 1060.68 SQ.FT. | 98.54 SQ.M.  |
| BALCONY AREA | 102.90 SQ.FT.  | 9.56 SQ.M.   |
| TOTAL AREA   | 1163.58 SQ.FT. | 108.10 SQ.M. |

KEY PLAN LEVEL

02-20

KEY SECTION



Disclaimer : All dimensions are in imperial and metric, and measured from finish to finish excluding construction tolerances. 2. All materials, dimensions, and drawings are approximate only. 3. Information is subject to change without notice, at developer's absolute discretion. 4. Actual area may vary from the stated area. 5. Drawings not to scale. 6. All images used are for illustrative purposes only and do not represent the actual size, features, specifications, fittings, and furnishings. The developer reserves the right to make revisions / alterations, at its absolute discretion, without any liability whatsoever.

EMAA

# ALTUS

DUBAI CREEK HARBOUR

TOWER 1

## 2 BEDROOM

LEVEL 02-20

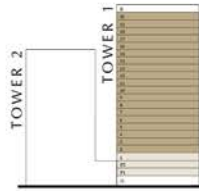
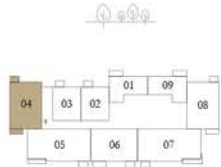
UNIT 04

|              |                           |                        |
|--------------|---------------------------|------------------------|
| SUITE AREA   | 1066.92 SQ.FT.            | 99.12 SQ.M.            |
| BALCONY AREA | 101.93 to 102.04 SQ.FT.   | 9.47 to 9.48 SQ.M.     |
| TOTAL AREA   | 1168.85 to 1168.96 SQ.FT. | 108.59 to 108.60 SQ.M. |

KEY PLAN LEVEL

02-20

KEY SECTION



Disclaimer : All dimensions are in imperial and metric, and measured from finish to finish excluding construction tolerances. 2. All materials, dimensions, and drawings are approximate only. 3. Information is subject to change without notice, at developer's absolute discretion. 4. Actual area may vary from the stated area. 5. Drawings not to scale. 6. All images used are for illustrative purposes only and do not represent the actual size, features, specifications, fittings, and furnishings. The developer reserves the right to make revisions / alterations, at its absolute discretion, without any liability whatsoever.

EMAA

# ALTUS

DUBAI CREEK HARBOUR

TOWER 1

## 2 BEDROOM

PODIUM 01

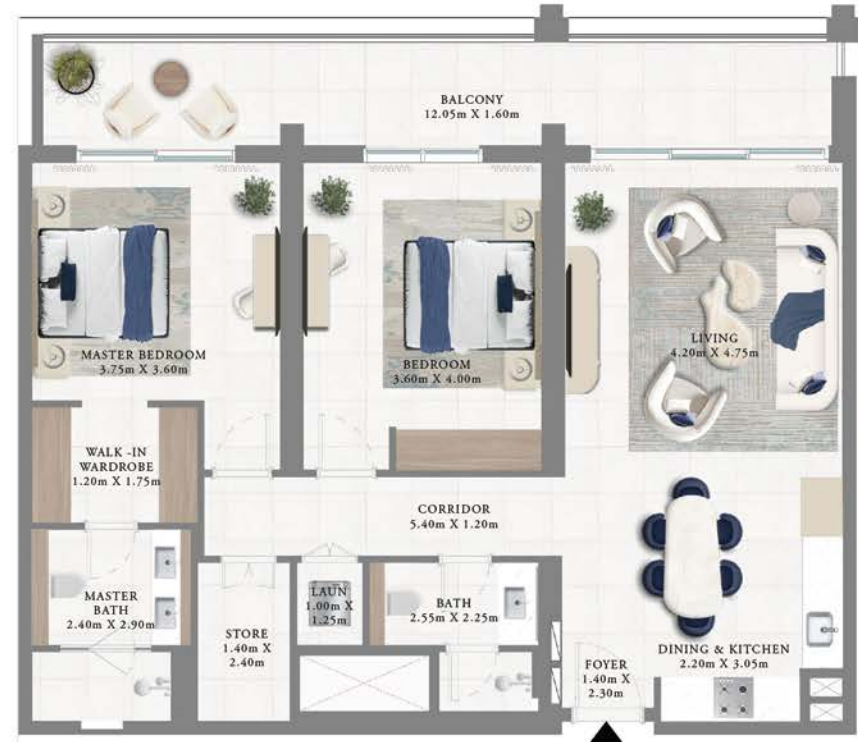
UNIT 02

|              |                |              |
|--------------|----------------|--------------|
| SUITE AREA   | 1124.08 SQ.FT. | 104.43 SQ.M. |
| BALCONY AREA | 238.96 SQ.FT.  | 22.20 SQ.M.  |
| TOTAL AREA   | 1363.04 SQ.FT. | 126.63 SQ.M. |

KEY PLAN LEVEL  
PODIUM 01



KEY SECTION



Disclaimer : All dimensions are in imperial and metric, and measured from finish to finish excluding construction tolerances. 2. All materials, dimensions, and drawings are approximate only. 3. Information is subject to change without notice, at developer's absolute discretion. 4. Actual area may vary from the stated area. 5. Drawings not to scale. 6. All images used are for illustrative purposes only and do not represent the actual size, features, specifications, fittings, and furnishings. 7. The developer reserves the right to make revisions / alterations, at it's absolute discretion, without any liability whatsoever.

EMAA

# ALTUS

DUBAI CREEK HARBOUR

TOWER 1

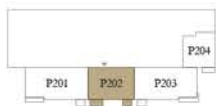
## 2 BEDROOM

PODIUM 02

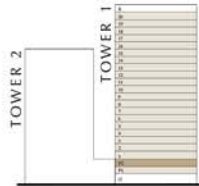
UNIT 02

|              |                |              |
|--------------|----------------|--------------|
| SUITE AREA   | 1124.08 SQ.FT. | 104.43 SQ.M. |
| BALCONY AREA | 102.90 SQ.FT.  | 9.56 SQ.M.   |
| TOTAL AREA   | 1226.98 SQ.FT. | 113.99 SQ.M. |

KEY PLAN LEVEL  
PODIUM 02



KEY SECTION



Disclaimer : All dimensions are in imperial and metric, and measured from finish to finish excluding construction tolerances. 2. All materials, dimensions, and drawings are approximate only. 3. Information is subject to change without notice, at developer's absolute discretion. 4. Actual area may vary from the stated area. 5. Drawings not to scale. 6. All images used are for illustrative purposes only and do not represent the actual size, features, specifications, fittings, and furnishings. 7. The developer reserves the right to make revisions / alterations, at it's absolute discretion, without any liability whatsoever.

EMAA

# ALTUS

DUBAI CREEK HARBOUR

TOWER 1

## 2 BEDROOM

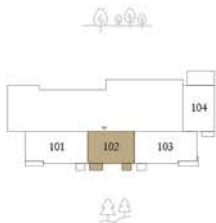
LEVEL 01

UNIT 02

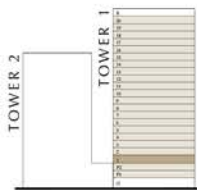
|              |                |              |
|--------------|----------------|--------------|
| SUITE AREA   | 1124.61 SQ.FT. | 104.48 SQ.M. |
| BALCONY AREA | 102.90 SQ.FT.  | 9.56 SQ.M.   |
| TOTAL AREA   | 1227.51 SQ.FT. | 114.04 SQ.M. |

KEY PLAN LEVEL

01



KEY SECTION



Disclaimer : All dimensions are in imperial and metric, and measured from finish to finish excluding construction tolerances. 2. All materials, dimensions, and drawings are approximate only. 3. Information is subject to change without notice, at developer's absolute discretion. 4. Actual area may vary from the stated area. 5. Drawings not to scale. 6. All images used are for illustrative purposes only and do not represent the actual size, features, specifications, fittings, and furnishings. 7. The developer reserves the right to make revisions / alterations, at it's absolute discretion, without any liability whatsoever.

EMAA



# ALTUS

DUBAI CREEK HARBOUR

TOWER 1

## 2 BEDROOM

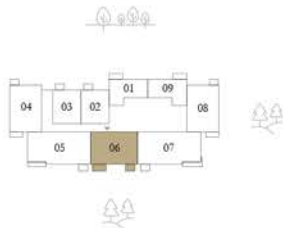
LEVEL 02-20

UNIT 06

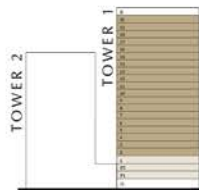
|              |                              |                           |
|--------------|------------------------------|---------------------------|
| SUITE AREA   | 1124.51 to<br>1124.61 SQ.FT. | 104.47 to<br>104.48 SQ.M. |
| BALCONY AREA | 102.90 SQ.FT.                | 9.56 SQ.M.                |
| TOTAL AREA   | 1227.41 to<br>1227.51 SQ.FT. | 114.03 to<br>114.04 SQ.M. |

KEY PLAN LEVEL

02-20



KEY SECTION



Disclaimer : All dimensions are in imperial and metric, and measured from finish to finish excluding construction tolerances. 2. All materials, dimensions, and drawings are approximate only. 3. Information is subject to change without notice, at developer's absolute discretion. 4. Actual area may vary from the stated area. 5. Drawings not to scale. 6. All images used are for illustrative purposes only and do not represent the actual size, features, specifications, fittings, and furnishings. The developer reserves the right to make revisions / alterations, at its absolute discretion, without any liability whatsoever.

EMAA



# ALTUS

DUBAI CREEK HARBOUR

TOWER 1

## 3 BEDROOM

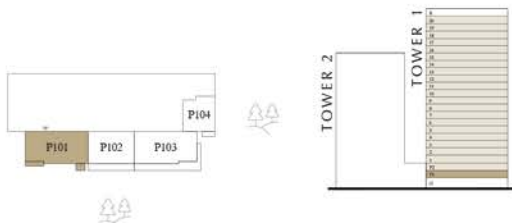
PODIUM 01

UNIT 01

|              |                |              |
|--------------|----------------|--------------|
| SUITE AREA   | 1491.77 SQ.FT. | 138.59 SQ.M. |
| BALCONY AREA | 104.52 SQ.FT.  | 9.71 SQ.M.   |
| TOTAL AREA   | 1596.29 SQ.FT. | 148.30 SQ.M. |

KEY PLAN LEVEL  
PODIUM 01

KEY SECTION



Disclaimer : All dimensions are in imperial and metric, and measured from finish to finish excluding construction tolerances. 2. All materials, dimensions, and drawings are approximate only. 3. Information is subject to change without notice, at developer's absolute discretion. 4. Actual area may vary from the stated area. 5. Drawings not to scale. 6. All images used are for illustrative purposes only and do not represent the actual size, features, specifications, fittings, and furnishings. 7. The developer reserves the right to make revisions / alterations, at it's absolute discretion, without any liability whatsoever.

EMAA

# ALTUS

DUBAI CREEK HARBOUR

TOWER 1

## 3 BEDROOM

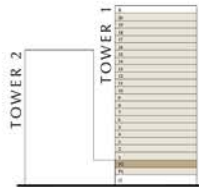
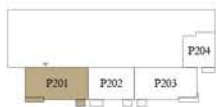
PODIUM 02

UNIT 01

|              |                |              |
|--------------|----------------|--------------|
| SUITE AREA   | 1490.48 SQ.FT. | 138.47 SQ.M. |
| BALCONY AREA | 105.70 SQ.FT.  | 9.82 SQ.M.   |
| TOTAL AREA   | 1596.18 SQ.FT. | 148.29 SQ.M. |

KEY PLAN LEVEL  
PODIUM 02

KEY SECTION



Disclaimer : All dimensions are in imperial and metric, and measured from finish to finish excluding construction tolerances. 2. All materials, dimensions, and drawings are approximate only. 3. Information is subject to change without notice, at developer's absolute discretion. 4. Actual area may vary from the stated area. 5. Drawings not to scale. 6. All images used are for illustrative purposes only and do not represent the actual size, features, specifications, fittings, and furnishings. 7. The developer reserves the right to make revisions / alterations, at it's absolute discretion, without any liability whatsoever.

EMAA

# ALTUS

DUBAI CREEK HARBOUR

TOWER 1

## 3 BEDROOM

LEVEL 01

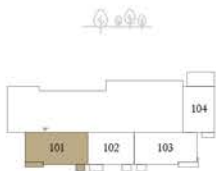
UNIT 01

|              |                |              |
|--------------|----------------|--------------|
| SUITE AREA   | 1491.66 SQ.FT. | 138.58 SQ.M. |
| BALCONY AREA | 113.67 SQ.FT.  | 10.56 SQ.M.  |
| TOTAL AREA   | 1605.33 SQ.FT. | 149.14 SQ.M. |

KEY PLAN LEVEL

01

KEY SECTION



Disclaimer : All dimensions are in imperial and metric, and measured from finish to finish excluding construction tolerances. 2. All materials, dimensions, and drawings are approximate only. 3. Information is subject to change without notice, at developer's absolute discretion. 4. Actual area may vary from the stated area. 5. Drawings not to scale. 6. All images used are for illustrative purposes only and do not represent the actual size, features, specifications, fittings, and furnishings. 7. The developer reserves the right to make revisions / alterations, at it's absolute discretion, without any liability whatsoever.

EMAA

# ALTUS

DUBAI CREEK HARBOUR

TOWER 1

## 3 BEDROOM

LEVEL 02-20

UNIT 05

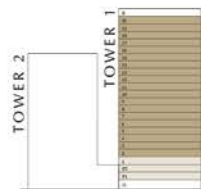
|              |                              |                           |
|--------------|------------------------------|---------------------------|
| SUITE AREA   | 1492.31 to<br>1492.52 SQ.FT. | 138.64 to<br>138.66 SQ.M. |
| BALCONY AREA | 120.77 SQ.FT.                | 11.22 SQ.M.               |
| TOTAL AREA   | 1613.08 to<br>1613.29 SQ.FT. | 149.86 to<br>149.88 SQ.M. |

KEY PLAN LEVEL

02-20



KEY SECTION



Disclaimer : All dimensions are in imperial and metric, and measured from finish to finish excluding construction tolerances. 2. All materials, dimensions, and drawings are approximate only. 3. Information is subject to change without notice, at developer's absolute discretion. 4. Actual area may vary from the stated area. 5. Drawings not to scale. 6. All images used are for illustrative purposes only and do not represent the actual size, features, specifications, fittings, and furnishings. The developer reserves the right to make revisions / alterations, at its absolute discretion, without any liability whatsoever.

EMAA



# ALTUS

DUBAI CREEK HARBOUR

TOWER 1

## 3 BEDROOM

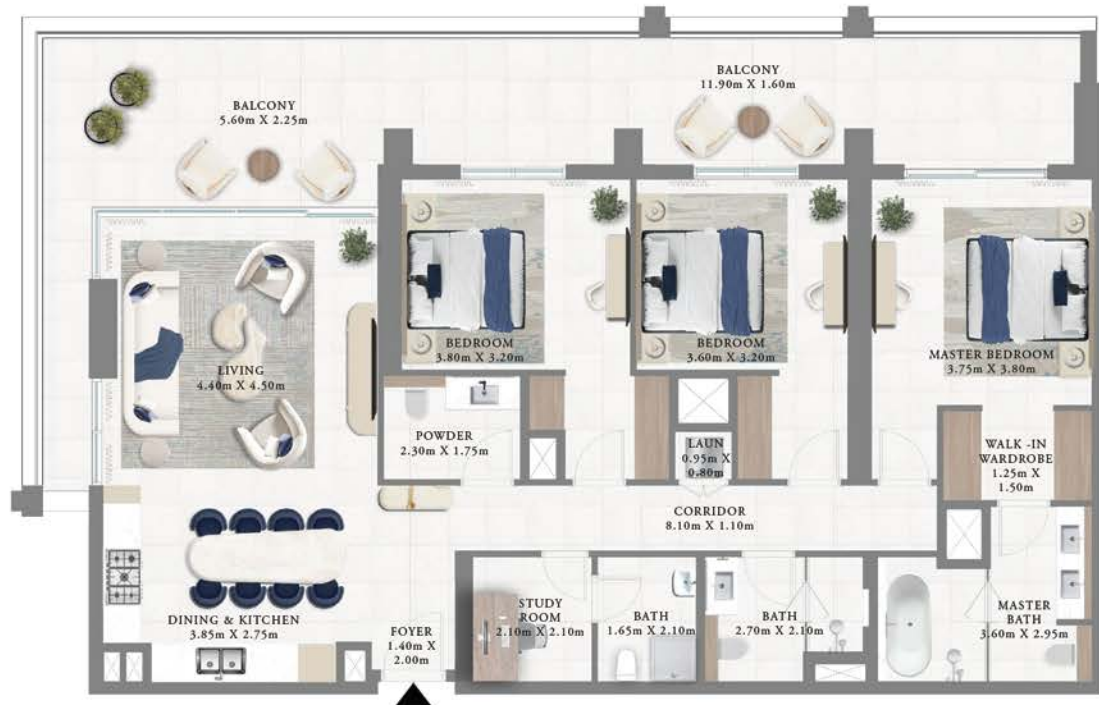
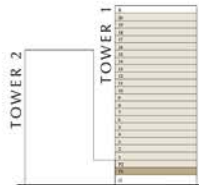
PODIUM 01

UNIT 03

|              |                |              |
|--------------|----------------|--------------|
| SUITE AREA   | 1493.92 SQ.FT. | 138.79 SQ.M. |
| BALCONY AREA | 433.14 SQ.FT.  | 40.24 SQ.M.  |
| TOTAL AREA   | 1927.06 SQ.FT. | 179.03 SQ.M. |

KEY PLAN LEVEL  
PODIUM 01

KEY SECTION



Disclaimer : All dimensions are in imperial and metric, and measured from finish to finish excluding construction tolerances. 2. All materials, dimensions, and drawings are approximate only. 3. Information is subject to change without notice, at developer's absolute discretion. 4. Actual area may vary from the stated area. 5. Drawings not to scale. 6. All images used are for illustrative purposes only and do not represent the actual size, features, specifications, fittings, and furnishings. 7. The developer reserves the right to make revisions / alterations, at it's absolute discretion, without any liability whatsoever.

EMAA

# ALTUS

DUBAI CREEK HARBOUR

TOWER 1

## 3 BEDROOM

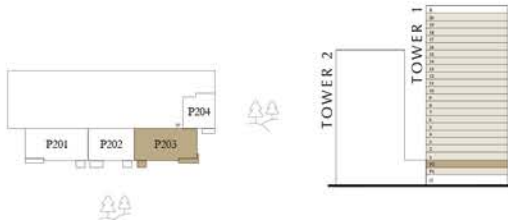
PODIUM 02

UNIT 03

|              |                |              |
|--------------|----------------|--------------|
| SUITE AREA   | 1491.99 SQ.FT. | 138.61 SQ.M. |
| BALCONY AREA | 121.09 SQ.FT.  | 11.25 SQ.M.  |
| TOTAL AREA   | 1613.08 SQ.FT. | 149.86 SQ.M. |

KEY PLAN LEVEL  
PODIUM 02

KEY SECTION



Disclaimer : All dimensions are in imperial and metric, and measured from finish to finish excluding construction tolerances. 2. All materials, dimensions, and drawings are approximate only. 3. Information is subject to change without notice, at developer's absolute discretion. 4. Actual area may vary from the stated area. 5. Drawings not to scale. 6. All images used are for illustrative purposes only and do not represent the actual size, features, specifications, fittings, and furnishings. 7. The developer reserves the right to make revisions / alterations, at it's absolute discretion, without any liability whatsoever.

EMAA



# ALTUS

DUBAI CREEK HARBOUR

TOWER 1

## 3 BEDROOM

LEVEL 01

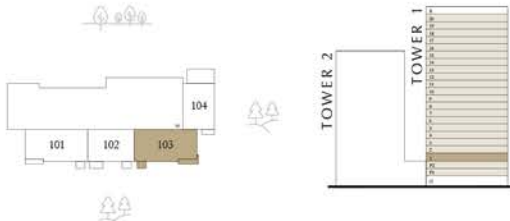
UNIT 03

|              |                |              |
|--------------|----------------|--------------|
| SUITE AREA   | 1492.52 SQ.FT. | 138.66 SQ.M. |
| BALCONY AREA | 120.66 SQ.FT.  | 11.21 SQ.M.  |
| TOTAL AREA   | 1613.18 SQ.FT. | 149.87 SQ.M. |

KEY PLAN LEVEL

01

KEY SECTION



Disclaimer : All dimensions are in imperial and metric, and measured from finish to finish excluding construction tolerances. 2. All materials, dimensions, and drawings are approximate only. 3. Information is subject to change without notice, at developer's absolute discretion. 4. Actual area may vary from the stated area. 5. Drawings not to scale. 6. All images used are for illustrative purposes only and do not represent the actual size, features, specifications, fittings, and furnishings. 7. The developer reserves the right to make revisions / alterations, at it's absolute discretion, without any liability whatsoever.

EMAA

# ALTUS

DUBAI CREEK HARBOUR

TOWER 1

## 3 BEDROOM

LEVEL 02-20

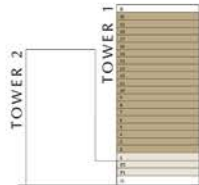
UNIT 07

|              |                |              |
|--------------|----------------|--------------|
| SUITE AREA   | 1492.09 SQ.FT. | 138.62 SQ.M. |
| BALCONY AREA | 120.88 SQ.FT.  | 11.23 SQ.M.  |
| TOTAL AREA   | 1612.97 SQ.FT. | 149.85 SQ.M. |

KEY PLAN LEVEL

02-20

KEY SECTION



Disclaimer : All dimensions are in imperial and metric, and measured from finish to finish excluding construction tolerances. 2. All materials, dimensions, and drawings are approximate only. 3. Information is subject to change without notice, developer's absolute discretion. 4. Actual area may vary from the stated area. 5. Drawings not to scale. 6. All images used are for illustrative purposes only and do not represent the actual size, features, specifications, fittings, and furnishings. The developer reserves the right to make revisions / alterations, at it's absolute discretion, without any liability whatsoever.

EMAA

# ALTUS

DUBAI CREEK HARBOUR

---

FLOOR PLAN - TOWER 2

---

EMAAR

# ALTUS

DUBAI CREEK HARBOUR

TOWER 2

## 1 BEDROOM

PODIUM 01 & 02

UNIT 02

|              |               |            |
|--------------|---------------|------------|
| SUITE AREA   | 704.07 SQ.FT. | 65.41 SQ.M |
| BALCONY AREA | 61.14 SQ.FT.  | 5.68 SQ.M  |
| TOTAL AREA   | 765.21 SQ.FT. | 71.09 SQ.M |

KEY PLAN LEVEL  
PODIUM 01 & 02



KEY SECTION



Disclaimer : All dimensions are in imperial and metric, and measured from finish to finish excluding construction tolerances. 2. All materials, dimensions, and drawings are approximate only. 3. Information is subject to change without notice, at developer's absolute discretion. 4. Actual area may vary from the stated area. 5. Drawings not to scale. 6. All images used are for illustrative purposes only and do not represent the actual size, features, specifications, fittings, and furnishings. 7. The developer reserves the right to make revisions / alterations, at it's absolute discretion, without any liability whatsoever.

EMAA

# ALTUS

DUBAI CREEK HARBOUR

TOWER 2

## 1 BEDROOM

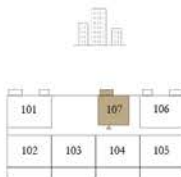
LEVEL 01

UNIT 07

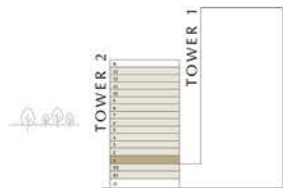
|              |               |             |
|--------------|---------------|-------------|
| SUITE AREA   | 704.07 SQ.FT. | 65.41 SQ.M. |
| BALCONY AREA | 61.14 SQ.FT.  | 5.68 SQ.M.  |
| TOTAL AREA   | 765.21 SQ.FT. | 71.09 SQ.M. |

KEY PLAN LEVEL

01



KEY SECTION



Disclaimer : All dimensions are in imperial and metric, and measured from finish to finish excluding construction tolerances. 2. All materials, dimensions, and drawings are approximate only. 3. Information is subject to change without notice, at developer's absolute discretion. 4. Actual area may vary from the stated area. 5. Drawings not to scale. 6. All images used are for illustrative purposes only and do not represent the actual size, features, specifications, fittings, and furnishings. The developer reserves the right to make revisions / alterations, at its absolute discretion, without any liability whatsoever.

EMAA

# ALTUS

DUBAI CREEK HARBOUR

TOWER 2

## 1 BEDROOM

LEVEL 02-13

UNIT 07

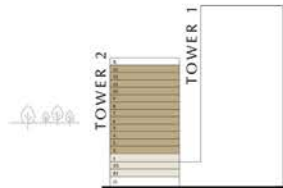
|              |               |             |
|--------------|---------------|-------------|
| SUITE AREA   | 704.07 SQ.FT. | 65.41 SQ.M. |
| BALCONY AREA | 61.14 SQ.FT.  | 5.68 SQ.M.  |
| TOTAL AREA   | 765.21 SQ.FT. | 71.09 SQ.M. |

KEY PLAN LEVEL

02-13



KEY SECTION



Disclaimer : All dimensions are in imperial and metric, and measured from finish to finish excluding construction tolerances. 2. All materials, dimensions, and drawings are approximate only. 3. Information is subject to change without notice, at developer's absolute discretion. 4. Actual area may vary from the stated area. 5. Drawings not to scale. 6. All images used are for illustrative purposes only and do not represent the actual size, features, specifications, fittings, and furnishings. The developer reserves the right to make revisions / alterations, at its absolute discretion, without any liability whatsoever.

EMAA



# ALTUS

DUBAI CREEK HARBOUR

TOWER 2

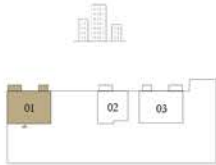
## 2 BEDROOM

PODIUM 01 & 02

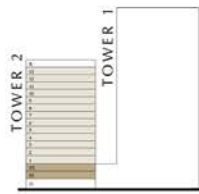
UNIT 01

|              |                              |                           |
|--------------|------------------------------|---------------------------|
| SUITE AREA   | 1039.58 to<br>1040.44 SQ.FT. | 96.58 to<br>96.66 SQ.M.   |
| BALCONY AREA | 102.15 to<br>103.12 SQ.FT.   | 9.49 to<br>9.58 SQ.M.     |
| TOTAL AREA   | 1141.73 to<br>1143.56 SQ.FT. | 106.07 to<br>106.24 SQ.M. |

KEY PLAN LEVEL  
PODIUM 01 & 02



KEY SECTION



Disclaimer : All dimensions are in imperial and metric, and measured from finish to finish excluding construction tolerances. 2. All materials, dimensions, and drawings are approximate only. 3. Information is subject to change without notice, developer's absolute discretion. 4. Actual area may vary from the stated area. 5. Drawings not to scale. 6. All images used are for illustrative purposes only and do not represent the actual size, features, specifications, fittings, and furnishings. The developer reserves the right to make revisions / alterations, at it's absolute discretion, without any liability whatsoever.

EMAA

# ALTUS

DUBAI CREEK HARBOUR

TOWER 2

## 2 BEDROOM

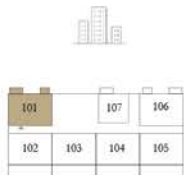
LEVEL 01

UNIT 01

|              |                |              |
|--------------|----------------|--------------|
| SUITE AREA   | 1041.09 SQ.FT. | 96.72 SQ.M.  |
| BALCONY AREA | 103.12 SQ.FT.  | 9.58 SQ.M.   |
| TOTAL AREA   | 1144.21 SQ.FT. | 106.30 SQ.M. |

KEY PLAN LEVEL

01



KEY SECTION



Disclaimer : All dimensions are in imperial and metric, and measured from finish to finish excluding construction tolerances. 2. All materials, dimensions, and drawings are approximate only. 3. Information is subject to change without notice, at developer's absolute discretion. 4. Actual area may vary from the stated area. 5. Drawings not to scale. 6. All images used are for illustrative purposes only and do not represent the actual size, features, specifications, fittings, and furnishings. 7. The developer reserves the right to make revisions / alterations, at it's absolute discretion, without any liability whatsoever.

EMAA

# ALTUS

DUBAI CREEK HARBOUR

TOWER 2

## 2 BEDROOM

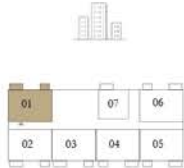
LEVEL 02-13

UNIT 01

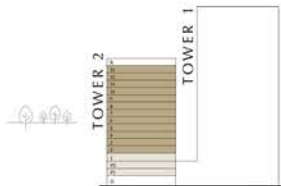
|              |                |              |
|--------------|----------------|--------------|
| SUITE AREA   | 1041.09 SQ.FT. | 96.72 SQ.M.  |
| BALCONY AREA | 103.12 SQ.FT.  | 9.58 SQ.M.   |
| TOTAL AREA   | 1144.21 SQ.FT. | 106.30 SQ.M. |

KEY PLAN LEVEL

02-13



KEY SECTION



Disclaimer : All dimensions are in imperial and metric, and measured from finish to finish excluding construction tolerances. 2. All materials, dimensions, and drawings are approximate only. 3. Information is subject to change without notice, at developer's absolute discretion. 4. Actual area may vary from the stated area. 5. Drawings not to scale. 6. All images used are for illustrative purposes only and do not represent the actual size, features, specifications, fittings, and furnishings. 7. The developer reserves the right to make revisions / alterations, at it's absolute discretion, without any liability whatsoever.

EMAA

# ALTUS

DUBAI CREEK HARBOUR

TOWER 2

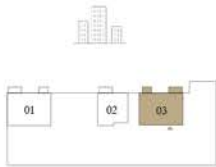
## 2 BEDROOM

PODIUM 01 & 02

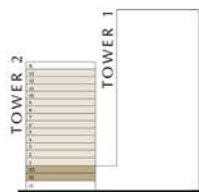
UNIT 03

|              |                              |                           |
|--------------|------------------------------|---------------------------|
| SUITE AREA   | 1035.38 to<br>1035.60 SQ.FT. | 96.19 to<br>96.21 SQ.M.   |
| BALCONY AREA | 103.33 SQ.FT.                | 9.60 SQ.M.                |
| TOTAL AREA   | 1138.71 to<br>1138.93 SQ.FT. | 105.79 to<br>105.81 SQ.M. |

KEY PLAN LEVEL  
PODIUM 01 & 02



KEY SECTION



Disclaimer : All dimensions are in imperial and metric, and measured from finish to finish excluding construction tolerances. 2. All materials, dimensions, and drawings are approximate only. 3. Information is subject to change without notice, developer's absolute discretion. 4. Actual area may vary from the stated area. 5. Drawings not to scale. 6. All images used are for illustrative purposes only and do not represent the actual size, features, specifications, fittings, and furnishings. The developer reserves the right to make revisions / alterations, at it's absolute discretion, without any liability whatsoever.

EMAA

# ALTUS

DUBAI CREEK HARBOUR

TOWER 2

## 2 BEDROOM

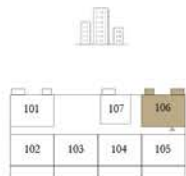
LEVEL 01

UNIT 06

|              |                |              |
|--------------|----------------|--------------|
| SUITE AREA   | 1040.44 SQ.FT. | 96.66 SQ.M.  |
| BALCONY AREA | 103.33 SQ.FT.  | 9.60 SQ.M.   |
| TOTAL AREA   | 1143.77 SQ.FT. | 106.26 SQ.M. |

KEY PLAN LEVEL

01



KEY SECTION



Disclaimer : All dimensions are in imperial and metric, and measured from finish to finish excluding construction tolerances. 2. All materials, dimensions, and drawings are approximate only. 3. Information is subject to change without notice, at developer's absolute discretion. 4. Actual area may vary from the stated area. 5. Drawings not to scale. 6. All images used are for illustrative purposes only and do not represent the actual size, features, specifications, fittings, and furnishings. 7. The developer reserves the right to make revisions / alterations, at it's absolute discretion, without any liability whatsoever.

EMAA



# ALTUS

DUBAI CREEK HARBOUR

TOWER 2

## 2 BEDROOM

LEVEL 02-13

UNIT 06

|              |                |              |
|--------------|----------------|--------------|
| SUITE AREA   | 1041.09 SQ.FT. | 96.72 SQ.M.  |
| BALCONY AREA | 103.12 SQ.FT.  | 9.58 SQ.M.   |
| TOTAL AREA   | 1144.21 SQ.FT. | 106.30 SQ.M. |

KEY PLAN LEVEL

02-13



KEY SECTION



Disclaimer : All dimensions are in imperial and metric, and measured from finish to finish excluding construction tolerances. 2. All materials, dimensions, and drawings are approximate only. 3. Information is subject to change without notice, at developer's absolute discretion. 4. Actual area may vary from the stated area. 5. Drawings not to scale. 6. All images used are for illustrative purposes only and do not represent the actual size, features, specifications, fittings, and furnishings. 7. The developer reserves the right to make revisions / alterations, at it's absolute discretion, without any liability whatsoever.

EMAA



# ALTUS

DUBAI CREEK HARBOUR

TOWER 2

## 2 BEDROOM

LEVEL 01

UNIT 02

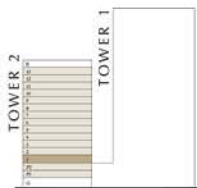
|              |                |              |
|--------------|----------------|--------------|
| SUITE AREA   | 1040.12 SQ.FT. | 96.63 SQ.M.  |
| BALCONY AREA | 391.70 SQ.FT.  | 36.39 SQ.M.  |
| TOTAL AREA   | 1431.82 SQ.FT. | 133.02 SQ.M. |

KEY PLAN LEVEL

01



KEY SECTION



Disclaimer : All dimensions are in imperial and metric, and measured from finish to finish excluding construction tolerances. 2. All materials, dimensions, and drawings are approximate only. 3. Information is subject to change without notice, at developer's absolute discretion. 4. Actual area may vary from the stated area. 5. Drawings not to scale. 6. All images used are for illustrative purposes only and do not represent the actual size, features, specifications, fittings, and furnishings. 7. The developer reserves the right to make revisions / alterations, at it's absolute discretion, without any liability whatsoever.

EMAA

# ALTUS

DUBAI CREEK HARBOUR

TOWER 2

## 2 BEDROOM

LEVEL 02-13

UNIT 02

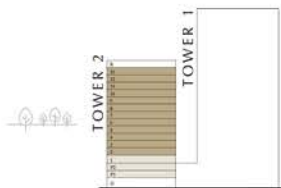
|              |                |              |
|--------------|----------------|--------------|
| SUITE AREA   | 1041.09 SQ.FT. | 96.72 SQ.M.  |
| BALCONY AREA | 103.12 SQ.FT.  | 9.58 SQ.M.   |
| TOTAL AREA   | 1144.21 SQ.FT. | 106.30 SQ.M. |

KEY PLAN LEVEL

02-13



KEY SECTION



Disclaimer : All dimensions are in imperial and metric, and measured from finish to finish excluding construction tolerances. 2. All materials, dimensions, and drawings are approximate only. 3. Information is subject to change without notice, at developer's absolute discretion. 4. Actual area may vary from the stated area. 5. Drawings not to scale. 6. All images used are for illustrative purposes only and do not represent the actual size, features, specifications, fittings, and furnishings. 7. The developer reserves the right to make revisions / alterations, at it's absolute discretion, without any liability whatsoever.

EMAA

# ALTUS

DUBAI CREEK HARBOUR

TOWER 2

## 2 BEDROOM

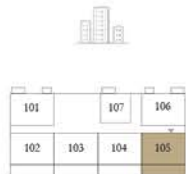
LEVEL 01

UNIT 05

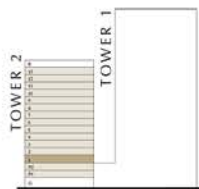
|              |                |              |
|--------------|----------------|--------------|
| SUITE AREA   | 1040.12 SQ.FT. | 96.63 SQ.M.  |
| BALCONY AREA | 395.25 SQ.FT.  | 36.72 SQ.M.  |
| TOTAL AREA   | 1435.37 SQ.FT. | 133.35 SQ.M. |

KEY PLAN LEVEL

01



KEY SECTION



Disclaimer : All dimensions are in imperial and metric, and measured from finish to finish excluding construction tolerances. 2. All materials, dimensions, and drawings are approximate only. 3. Information is subject to change without notice, at developer's absolute discretion. 4. Actual area may vary from the stated area. 5. Drawings not to scale. 6. All images used are for illustrative purposes only and do not represent the actual size, features, specifications, fittings, and furnishings. 7. The developer reserves the right to make revisions / alterations, at it's absolute discretion, without any liability whatsoever.

EMAA

# ALTUS

DUBAI CREEK HARBOUR

TOWER 2

## 2 BEDROOM

LEVEL 02-13 UNIT 05

|              |                |              |
|--------------|----------------|--------------|
| SUITE AREA   | 1040.76 SQ.FT. | 96.69 SQ.M.  |
| BALCONY AREA | 103.12 SQ.FT.  | 9.58 SQ.M.   |
| TOTAL AREA   | 1143.88 SQ.FT. | 106.27 SQ.M. |

KEY PLAN LEVEL

02-13



KEY SECTION



Disclaimer : All dimensions are in imperial and metric, and measured from finish to finish excluding construction tolerances. 2. All materials, dimensions, and drawings are approximate only. 3. Information is subject to change without notice, at developer's absolute discretion. 4. Actual area may vary from the stated area. 5. Drawings not to scale. 6. All images used are for illustrative purposes only and do not represent the actual size, features, specifications, fittings, and furnishings. 7. The developer reserves the right to make revisions / alterations, at it's absolute discretion, without any liability whatsoever.

EMAA

# ALTUS

DUBAI CREEK HARBOUR

TOWER 2

## 2 BEDROOM

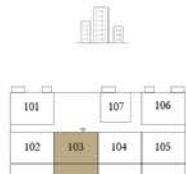
LEVEL 01

UNIT 03

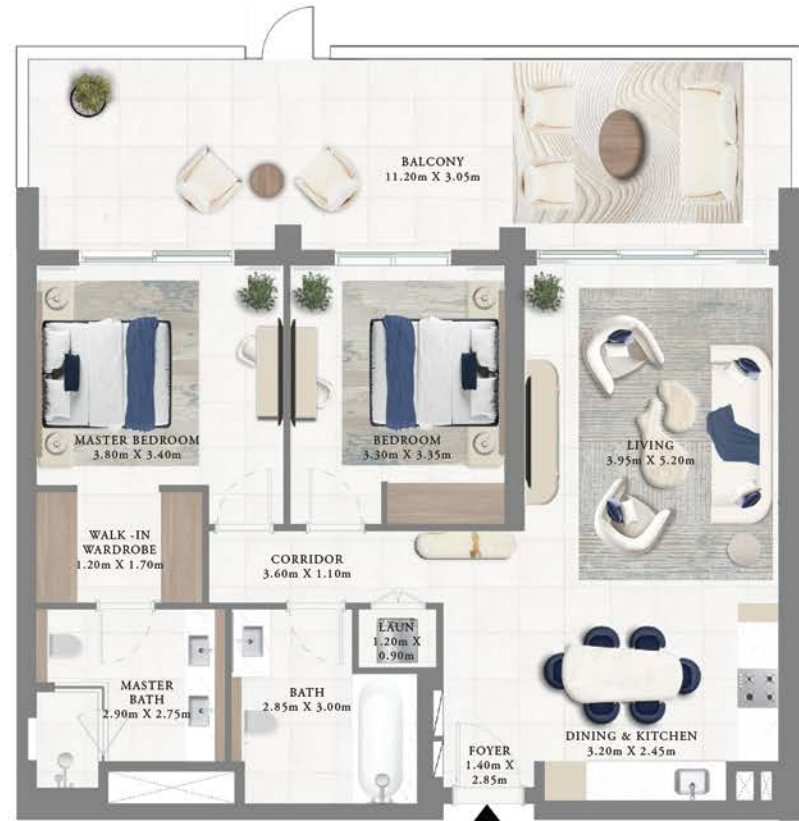
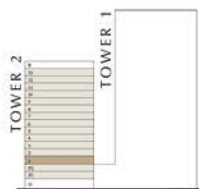
|              |                |              |
|--------------|----------------|--------------|
| SUITE AREA   | 1051.96 SQ.FT. | 97.73 SQ.M.  |
| BALCONY AREA | 390.62 SQ.FT.  | 36.29 SQ.M.  |
| TOTAL AREA   | 1442.58 SQ.FT. | 134.02 SQ.M. |

KEY PLAN LEVEL

01



KEY SECTION



Disclaimer : All dimensions are in imperial and metric, and measured from finish to finish excluding construction tolerances. 2. All materials, dimensions, and drawings are approximate only. 3. Information is subject to change without notice, at developer's absolute discretion. 4. Actual area may vary from the stated area. 5. Drawings not to scale. 6. All images used are for illustrative purposes only and do not represent the actual size, features, specifications, fittings, and furnishings. 7. The developer reserves the right to make revisions / alterations, at it's absolute discretion, without any liability whatsoever.

EMAA



# ALTUS

DUBAI CREEK HARBOUR

TOWER 2

## 2 BEDROOM

LEVEL 02-13

UNIT 03

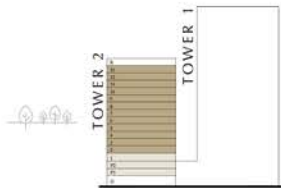
|              |                |              |
|--------------|----------------|--------------|
| SUITE AREA   | 1051.96 SQ.FT. | 97.73 SQ.M.  |
| BALCONY AREA | 103.33 SQ.FT.  | 9.60 SQ.M.   |
| TOTAL AREA   | 1155.29 SQ.FT. | 107.33 SQ.M. |

KEY PLAN LEVEL

02-13



KEY SECTION



Disclaimer : All dimensions are in imperial and metric, and measured from finish to finish excluding construction tolerances. 2. All materials, dimensions, and drawings are approximate only. 3. Information is subject to change without notice, at developer's absolute discretion. 4. Actual area may vary from the stated area. 5. Drawings not to scale. 6. All images used are for illustrative purposes only and do not represent the actual size, features, specifications, fittings, and furnishings. 7. The developer reserves the right to make revisions / alterations, at it's absolute discretion, without any liability whatsoever.

EMAA

# ALTUS

DUBAI CREEK HARBOUR

TOWER 2

## 2 BEDROOM

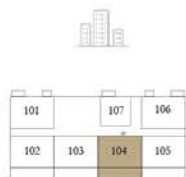
LEVEL 01

UNIT 04

|              |                |              |
|--------------|----------------|--------------|
| SUITE AREA   | 1051.96 SQ.FT. | 97.73 SQ.M.  |
| BALCONY AREA | 401.92 SQ.FT.  | 37.34 SQ.M.  |
| TOTAL AREA   | 1453.88 SQ.FT. | 135.07 SQ.M. |

KEY PLAN LEVEL

01



KEY SECTION



Disclaimer : All dimensions are in imperial and metric, and measured from finish to finish excluding construction tolerances. 2. All materials, dimensions, and drawings are approximate only. 3. Information is subject to change without notice, at developer's absolute discretion. 4. Actual area may vary from the stated area. 5. Drawings not to scale. 6. All images used are for illustrative purposes only and do not represent the actual size, features, specifications, fittings, and furnishings. 7. The developer reserves the right to make revisions / alterations, at it's absolute discretion, without any liability whatsoever.

EMAA

# ALTUS

DUBAI CREEK HARBOUR

TOWER 2

## 2 BEDROOM

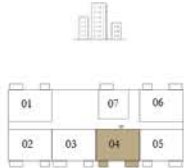
LEVEL 02-13

UNIT 04

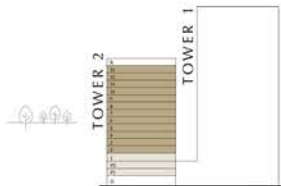
|              |                |              |
|--------------|----------------|--------------|
| SUITE AREA   | 1051.96 SQ.FT. | 97.73 SQ.M.  |
| BALCONY AREA | 103.33 SQ.FT.  | 9.60 SQ.M.   |
| TOTAL AREA   | 1155.29 SQ.FT. | 107.33 SQ.M. |

KEY PLAN LEVEL

02-13



KEY SECTION



Disclaimer : All dimensions are in imperial and metric, and measured from finish to finish excluding construction tolerances. 2. All materials, dimensions, and drawings are approximate only. 3. Information is subject to change without notice, at developer's absolute discretion. 4. Actual area may vary from the stated area. 5. Drawings not to scale. 6. All images used are for illustrative purposes only and do not represent the actual size, features, specifications, fittings, and furnishings. 7. The developer reserves the right to make revisions / alterations, at it's absolute discretion, without any liability whatsoever.

EMAA

# ALTUS


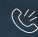


DUBAI CREEK HARBOUR

FOR MORE INFORMATION PLEASE CONTACT



**REAL ESTATE**

STAY AHEAD, INVEST SMART

 +971 55 476 7630  
 +971 4 368 7878  
 [info@afsrealestate.com](mailto:info@afsrealestate.com)  
 [www.afsrealestate.com](http://www.afsrealestate.com)



**DUBRICKS**

POSSIBILITIES ARE LIMITLESS

 +971 50 674 2020  
 +971 4 368 7878  
 [info@dubricks.com](mailto:info@dubricks.com)  
 [www.dubricks.com](http://www.dubricks.com)

EMAAR