

BOND ENCLAVE

BY PEARLSHIRE



BOND ENCLAVE

BY PEARLSHIRE



THE BOND ENCLAVE LEGACY



(P. 06)

THE ART OF LOCATION

(P. 18)

CURATED EXPERIENCES

(P. 28)

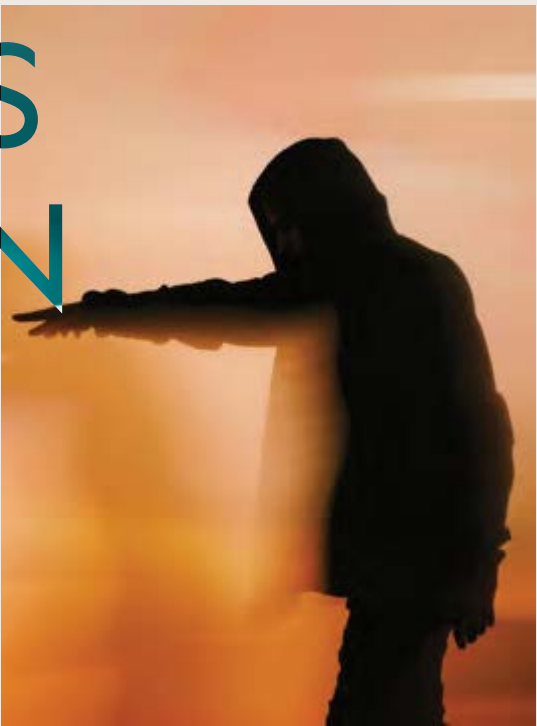


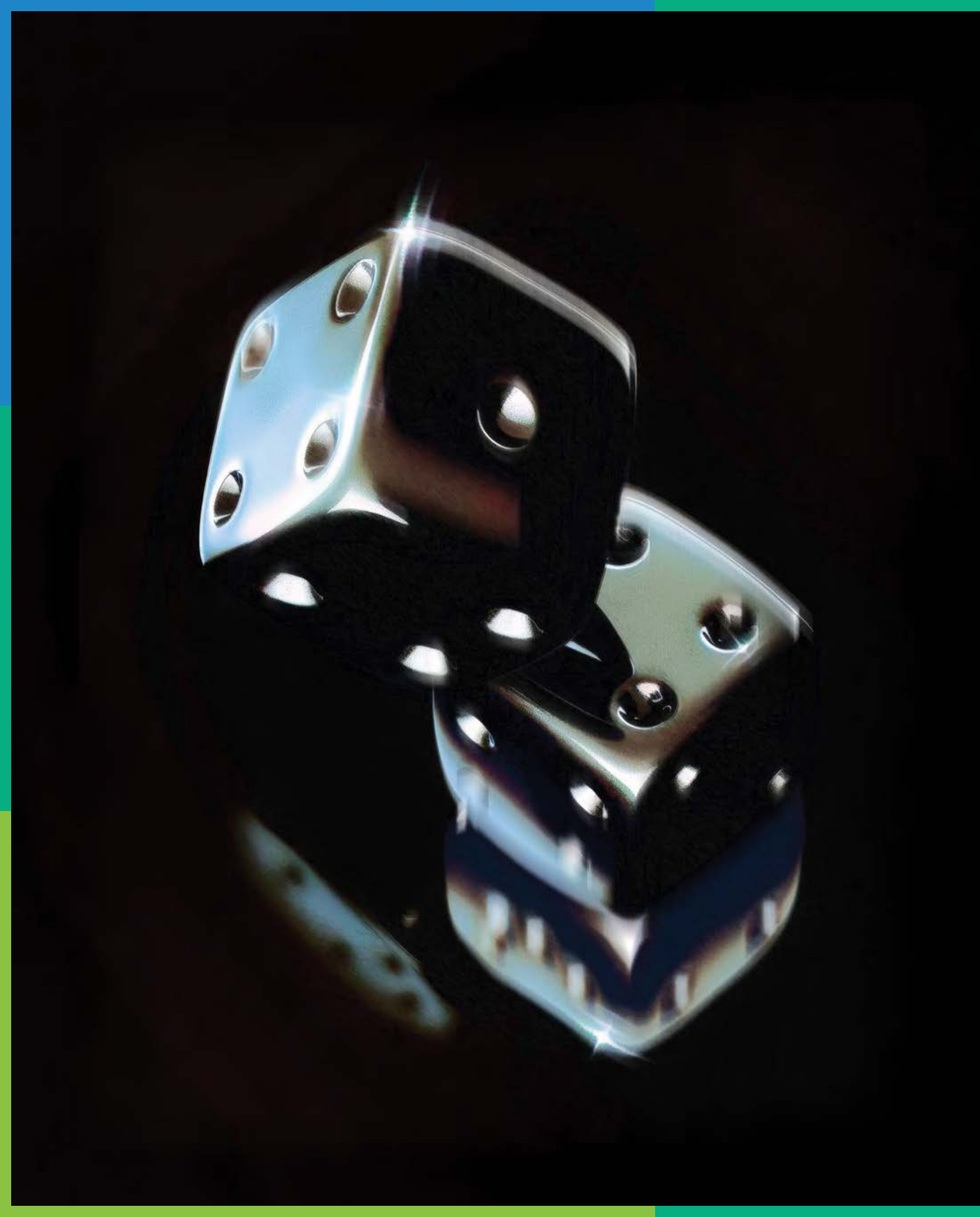
INTERIOR EXCELLENCE

(P. 56)

MASTERS OF VISION

(P. 78)





THE BOND ENCLAVE LEGACY

A BOLD NEW PLACE TO LIVE

O1

OWN THE INSPIRATION. LIVE THE LEGACY.

FOR THE DISCERNING CONNOISSEUR.

A world apart, yet perfectly placed. The Bond Enclave by Pearlshire rises as a beacon of unparalleled living in Arjan, Dubai. These branded havens are curated for those who demand the finest, featuring an exquisitely crafted ensemble of 1, 2, and 3-bedroom residences designed for discerning connoisseurs. With undulating elevation, extravagant interiors, and smart home technology, they herald a new echelon of uncompromising luxury. Own a legacy. Embrace a life of uncompromising excellence. The Bond Enclave – a statement residence for the privileged few.

Live the unparalleled luxury of a residence. Exquisite materials and meticulous craftsmanship embody the marque's elegance in your private sanctuary. Choose between stylish 1-bedroom retreats with private balconies or expansive 3-bedroom havens with direct pool access. Exclusive kitchens featuring premium Bosch appliances ignite culinary mastery. This is more than a residence – it's a legacy. Become one of the privileged few to own a piece of prestige at The Bond Enclave.





MAJESTIC ARCHITECTURAL SPLENDOUR

SHOWS CHARACTER FROM EVERY ANGLE.

This captivating address transcends mere residence; it embodies an exquisite testament to quality craftsmanship. The Bond Enclave is a sculpted masterpiece. Undulating facades provide a sense of fluidity, a testament to pioneering design, and rising amidst Arjan's vibrancy. Expansive windows usher in breathtaking vistas, while select residences boast wraparound terraces, blurring the lines between indoor and outdoor living.

Inspired by sleek elegance, the architect has sculpted this building with distinctive design and aerodynamic curves. Every angle and line exude a captivating allure reminiscent of timeless sophistication. This is not just a building; it's a statement. Just as it commands attention on the road, The Bond Enclave becomes a landmark of sophistication and innovation in the architectural landscape.



UNINTERRUPTED CITYSCAPES.

CRAFTED FOR CONNOISSEURS.

The expansive terraces and large windows from the impeccably crafted residences open to a park backdrop, capturing abundant natural light, creating a warm atmosphere, and bringing the outside greenery indoors. With panoramic perfection and magnificent views, the Bond Enclave epitomises a connoisseur's residence.







THE ART OF LOCATION

ARJAN

02

A CURATED ARJAN
EXPERIENCE.



A CONNOISSEUR'S ENCLAVE.

Beyond the sleek lines of the contemporary facade lies a tranquil sanctuary – a verdant oasis juxtaposed against urban energy. This is just a taste of the exceptional lifestyle awaiting Arjan. With favored hotels offering exceptional service steps from your residence, imagine exhilarating pursuits curated for those who demand the finest.



ARJAN ISN'T MERELY A COMMUNITY;
IT'S A LIFESTYLE RESERVED FOR THOSE WHO
APPRECIATE THE FINER THINGS.

PREMIER AMENITIES. WORLD-CLASS EXPERIENCES.

AT YOUR DOORSTEP

While Arjan boasts a vibrant tapestry of experiences, The Bond Enclave offers a haven of exclusivity. Step outside your door and into a world of curated experiences designed to elevate your lifestyle. World-renowned attractions are just a short journey away, from gardens to malls and golf courses to entertainment hubs. Arjan provides the perfect balance, and The Bond Enclave ensures you experience it in unparalleled style.

- LEISURE

 - 1. Global Village
 - 2. Mall of the Emirates
 - 3. Dubai Autodrome
 - 4. IMG Worlds of Adventure
 - 5. Dubai International Cricket Stadium
 - 6. Circle Mall
 - 7. Cityland Mall
 - 8. Skydive Dubai
 - 9. Dubai Hills Mall
 - 10. Meydan Grand Stand
- HEALTHCARE

 - 11. Emirates Hospital Day Surgery
 - 12. Karama Medical Centre
 - 13. Saudi German Hospital
 - 14. Mediclinic Meaisem
 - 15. NMC Royal Hospital
- EDUCATION

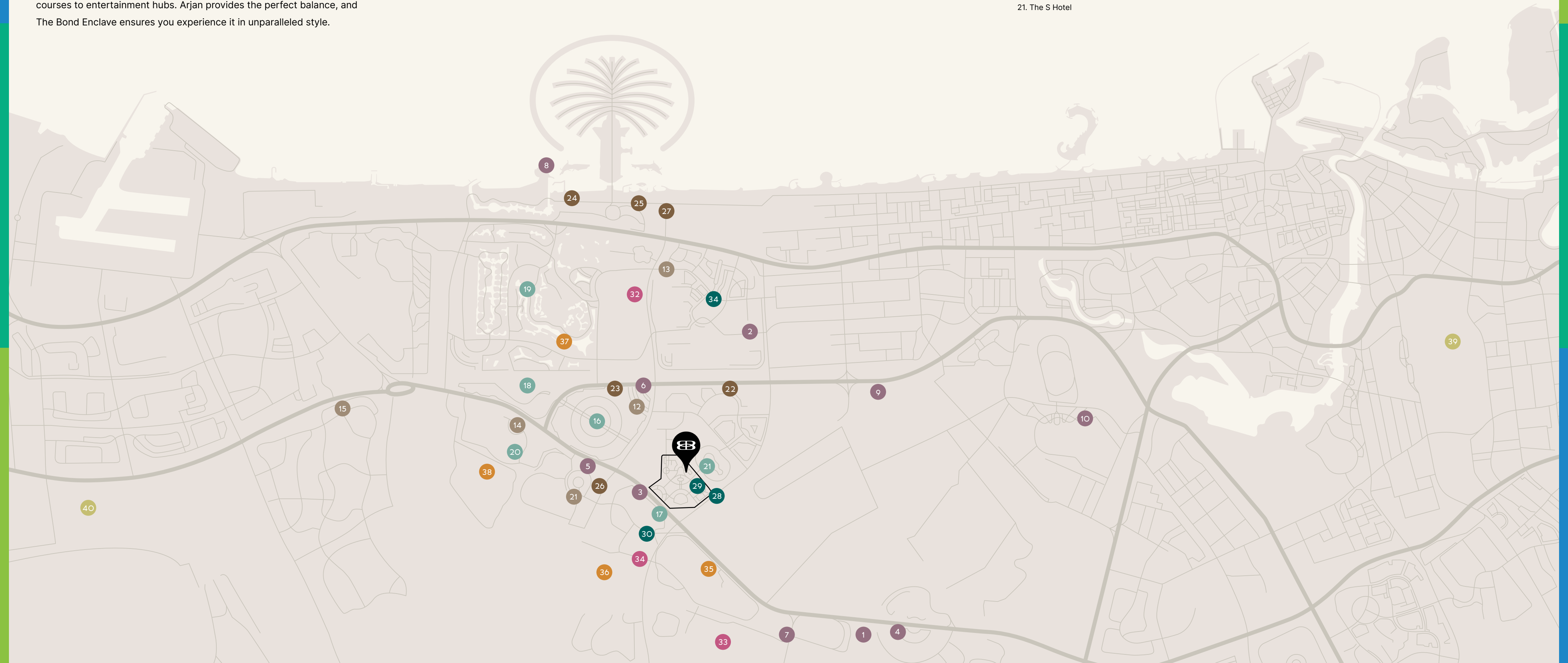
 - 22. GEMS World Academy
 - 23. JSS International School
 - 24. American University in Dubai
 - 25. Hult International Business School
 - 26. Renaissance International School
 - 27. The International School of Choueifat
- GOLF COURSES

 - 35. Arabian Ranches Golf Club
 - 36. Trump International Golf Course
 - 37. Taylor's Golf House
 - 38. Jumeirah Golf Estate Clubhouse
- AIRPORTS

 - 39. Dubai International Airport
 - 40. Al Maktoum International Airport
- HOSPITALITY

 - 16. FIVE JVC
 - 17. Park Inn by Radisson Dubai
 - 18. Movenpick Hotel JVT
 - 19. Address Montgomerie
 - 20. Ghaya Grand Hotel
 - 21. The S Hotel
- PARKS

 - 28. Dubai Miracle Garden
 - 29. Dubai Butterfly Garden
 - 30. Eastlands Park Motorcity
 - 31. Al Barsha Pond Parks



SEAMLESS CONNECTIONS.

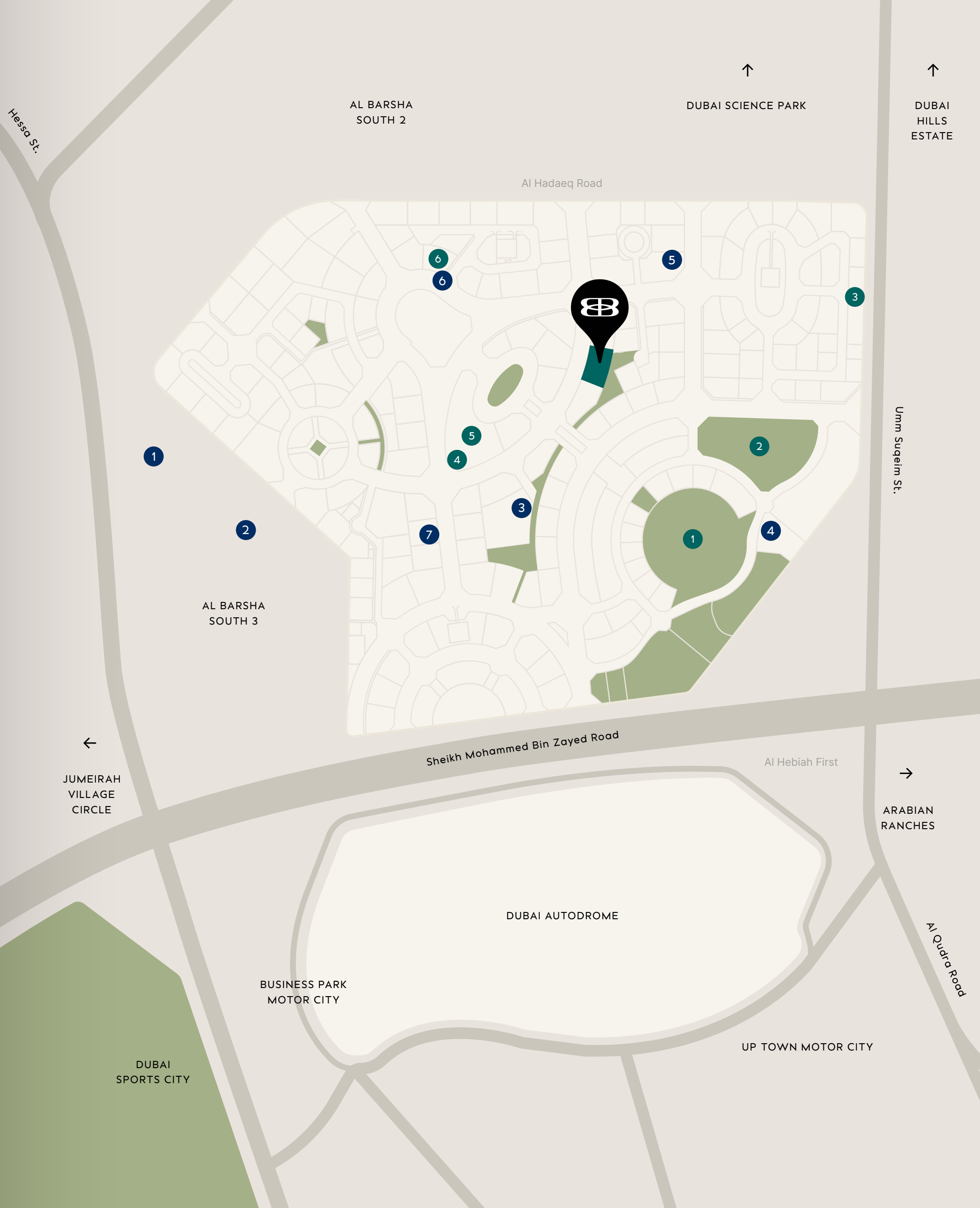
UNRIVALLED CONNECTIVITY TO ICONIC DESTINATIONS.

Arjan's coveted location places you at the heart of Dubai's vibrant tapestry. Connected by Umm Suqeim Road to the east and Sheikh Mohammed bin Zayed Road to the north, you enjoy easy access to the best of Dubai. Hessa Street provides additional convenient connectivity. Dubai International Airport is only 35 minutes away and Jumeirah Beach is 20 minutes away.

COMMUNITY SCHOOLS

- 1 Nord Anglia International School Dubai
- 2 Australian International School DXB
- 3 Dhruv Global School, Dubai
- 4 Safa Group of School
- 5 New Academy School
- 6 Happy Bees Early Learning Center
- 7 Together We Montessori

- 1 Dubai Butterfly Garden
- 2 Dubai Miracle Garden
- 3 Mediclinic Parkview Hospital
- 4 Grandiose Hypermarket
- 5 Al Sayyah Residences
- 6 Viva Supermarket Arjan





CURATED EXPERIENCES

ARMADA OF AWESOMENESS

03

LIVE THE LEGACY

BEYOND EXPECTATIONS. DISCOVER BESPOKE LIVING.

Embark on a new Dubai paradigm – a world of unparalleled luxury seamlessly woven with effortless living, tailored for those with a penchant for luxury. Every element elevates your experience from arrival. Indulge in holistic amenities, connect with like-minded individuals in sophisticated social spaces, and be captivated by the enticing views. Unforgettable experiences and cherished moments await.



EXCLUSIVE AMENITIES
FOR DISCERNING RESIDENTS.

UNPARALLELED LUXURY WITHIN REACH

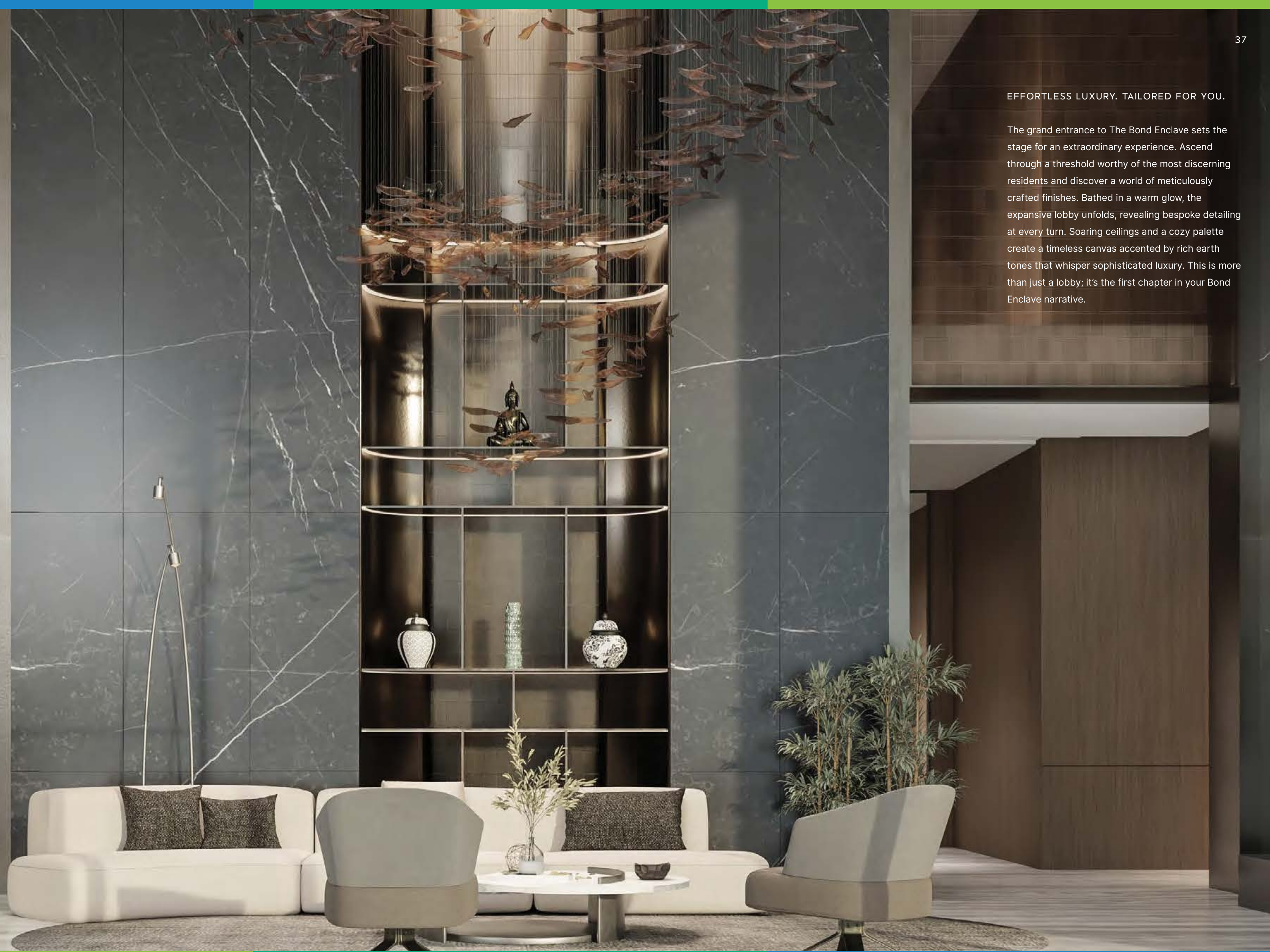
Our grand entrance with double height lobby sets the tone for a residence worthy of the most discerning residents. Extend your living space and connect with fellow residents at the clubhouse. Immerse yourself in a captivating film at the cinema, push your limits in the high-performance gymnasium, or unwind by the serene lazy river and infinity pool. Every detail is meticulously curated to elevate your life.



STEP INTO A WORLD OF METICULOUSLY
ENVISIONED AMENITIES DESIGNED TO
TRANSFORM YOUR EVERYDAY EXPERIENCE.

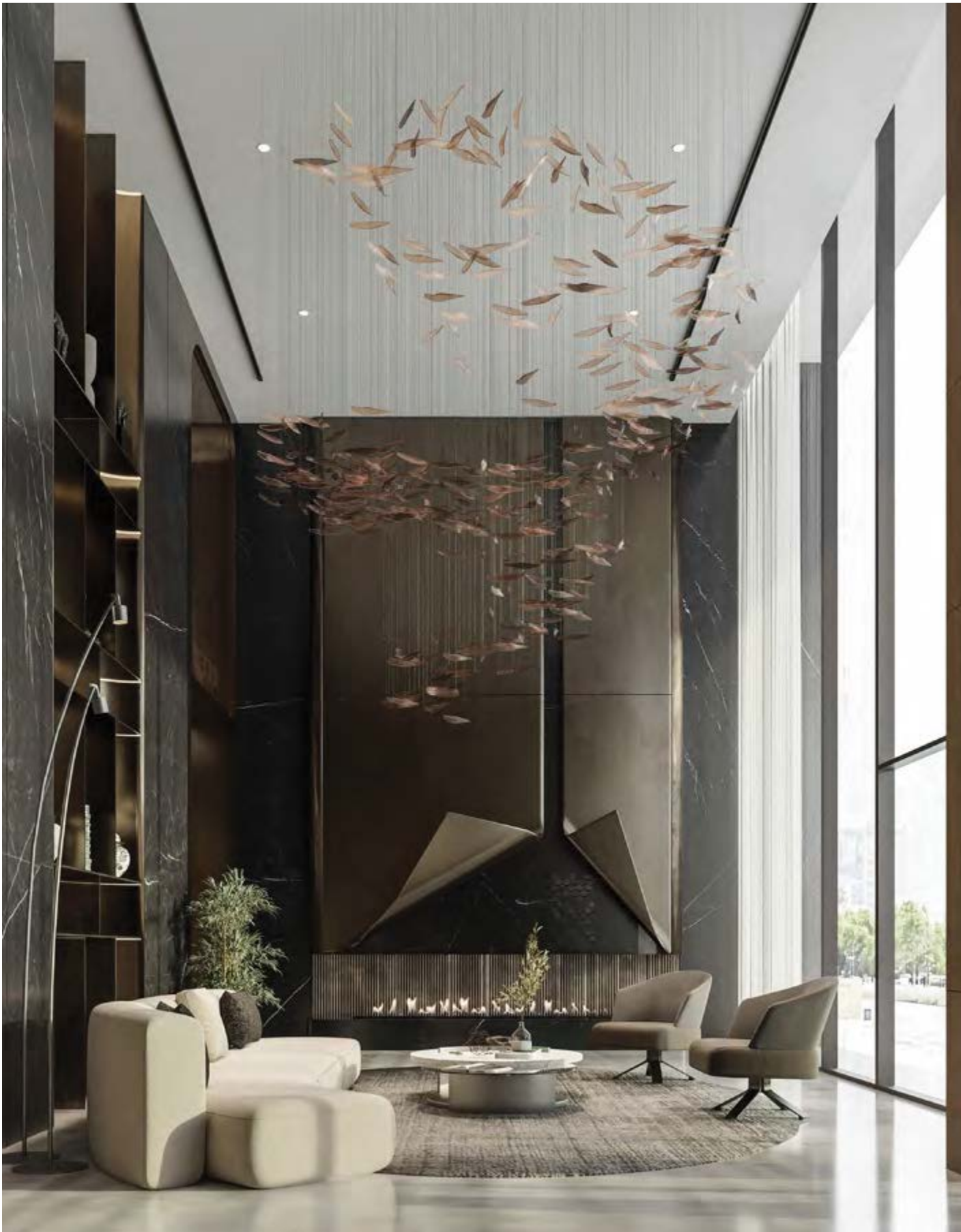
EFFORTLESS LUXURY. TAILORED FOR YOU.

The grand entrance to The Bond Enclave sets the stage for an extraordinary experience. Ascend through a threshold worthy of the most discerning residents and discover a world of meticulously crafted finishes. Bathed in a warm glow, the expansive lobby unfolds, revealing bespoke detailing at every turn. Soaring ceilings and a cozy palette create a timeless canvas accented by rich earth tones that whisper sophisticated luxury. This is more than just a lobby; it's the first chapter in your Bond Enclave narrative.





LOBBY LOUNGE





CURATED EXPERIENCES

GOLDEN OASIS →

Indulge in unparalleled relaxation. The meticulously landscaped, meandering river and pool area invite you to unwind in a serene sanctuary designed for your family's ultimate comfort.

THE INFINITY EDGE ↓

Unwind in a serene sanctuary. The infinity pool beckon with breathtaking views, inviting you to enjoy a private escape.





QUANTUM WORKOUT QUARTERS

Push your limits in the high-performance gymnasium. Cutting-edge equipment, separate male and female changing rooms, and a scenic jogging track await, empowering you to achieve peak fitness.



Q BRANCH RETREAT ←

Unwind and connect in style. The scenic outdoor clubhouse offers an intimate escape for socializing with friends amidst breathtaking surroundings.

ZAO XEN ZONE ↓

Embrace tranquility amidst vistas. The natural outdoor yoga zone provides a haven for rejuvenating wellness practices, fostering inner peace in a serene setting.



ROYALE SOCIAL LOUNGE

Discover a haven for relaxation and entertainment. The indoor clubhouse features a curated selection of amenities to elevate your leisure pursuits. Perfect your swing year-round in our state-of-the-art golf simulation, get the adrenaline with racing simulator and gather around elegant card tables, where precision meets entertainment in a social setting.



THE INTELLIGENCE DEN

Foster connections in refined elegance. The social lounge provides a sophisticated setting for hosting unforgettable gatherings and feeling a sense of community.





LITTLE SPIES PLAYGROUND

A world of wonder awaits. The thoughtfully designed indoor and outdoor play areas provide a vibrant space for children to explore and unwind, ensuring their safety and enjoyment.



GRILL & THRILL COURTYARD ←

Host unforgettable gatherings under the stars. The dedicated BBQ area provides the perfect setting for cherished moments with loved ones.

THUNDERBALL SKY COURT ↓

Engage in spirited competition amidst stunning surroundings. The exclusive paddle court fosters friendly rivalries and unforgettable matches.







OUTDOOR CINEMA

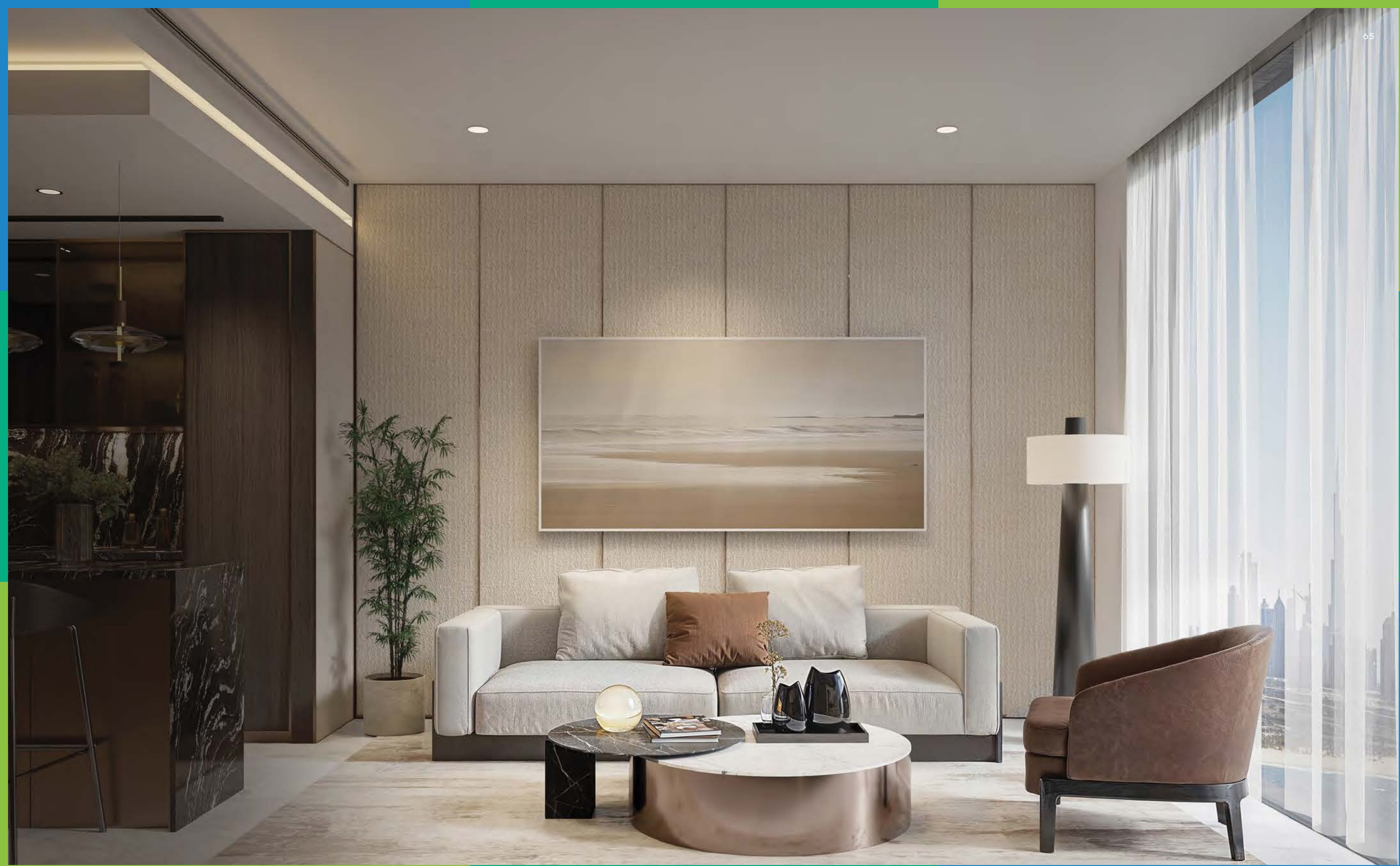




INTERIOR EXCELLENCE

WHERE LUXURY FINDS HOME

O4



FAR FROM ORDINARY.

Experience the legacy within. These crafted residences with bespoke interiors radiate sophisticated elegance. Step into an energetic haven with expansive living spaces bathed in natural light. Framed windows blur boundaries with sleek lines, integrating interior and exterior seamlessly. High-end finishes elevate every detail, from gourmet kitchens that flow harmoniously into living areas to bedrooms offering refined sanctuary. These limited-edition residences are your gateway to exclusive experiences and unparalleled living.



EXPERIENCE THE LEGACY WITHIN:
YOUR GATEWAY TO EXCLUSIVE EXPERIENCES
AND UNPARALLELED LIVING.

LIVING ROOMS

Unwind in a haven of refined elegance. Living areas boast expansive layouts, meticulously crafted with European-inspired design. Natural light flooded the space, highlighting the exquisite finishes and curated colour palette. Each detail fosters a sense of timeless sophistication, setting the stage for unforgettable gatherings.





3-BEDROOM LIVING ROOM



3-BEDROOM KITCHEN



KITCHENS

Embrace your inner chef in a culinary sanctuary. Open-concept kitchens seamlessly integrate premium Bosch white goods with sleek countertops and bespoke cabinetry. Indulge in the thrill of cooking within a space designed for functionality and timeless elegance.



BEDROOMS

Unwind in your serene sanctuary. Expansive floor-to-ceiling windows showcase breathtaking sunrises and sunsets, casting a warm glow on your impeccably designed sanctuary. Unwind in a haven of bespoke comfort, meticulously crafted to elevate your everyday experience.



BATHROOMS

Indulge in a spa-inspired retreat. Sleek, modern bathrooms seamlessly blend timeless elegance with contemporary design, featuring exquisite stonework and high-end fixtures. Every detail, from the deep soaking tub to the rainfall shower, is designed to create a haven of unparalleled relaxation.





POWDER ROOM ↓





MASTERS OF VISION

THE ARTISANS BEHIND THE EXCELLENCE

05

DISCLAIMER

This brochure has been prepared with all reasonable care and thought, however, Pearlshire Real Estate Developments LLC and its related companies and agents do not warrant the accuracy of any information shown and do not accept liability for any discrepancy in the items shown. Illustrations, images, furnishing and fixtures in this brochure are depictions and impressions for presentation purposes only and are not to be treated as a representation and/ or warranty by the Pearlshire Real Estate Developments LLC and its related companies and agents. Pearlshire Real Estate Developments LLC reserves the rights to change or revise, or make any modifications and additions to the project as a whole or part thereof or any details therein, at their sole discretion, without any prior notice. All the dimensions given herein (if any) are approximate and unfinishedone of the possible layouts which the Purchaser could arrange after the Unit is handed over and do not form part of the Unit. No Furniture, goods, accessories are included in the sale.

BOND ENCLAVE

BY PEARLSHIRE

FOR MORE INFORMATION PLEASE CONTACT

AFS
REAL ESTATE
STAY AHEAD, INVEST SMART

📞 +971 55 476 7630
☎️ +971 4 368 7878
✉️ info@afsrealestate.com
🌐 www.afsrealestate.com

db
DUBRICKS
POSSIBILITIES ARE LIMITLESS

📞 +971 50 674 2020
☎️ +971 4 368 7878
✉️ info@dubricks.com
🌐 www.dubricks.com

