

MONTIVA

BY VIDA

DUBAI CREEK HARBOUR

FLOOR PLAN



EMAAR

MONTIVA

BY VIDA

DUBAI CREEK HARBOUR

1 BEDROOM-TYPE 1

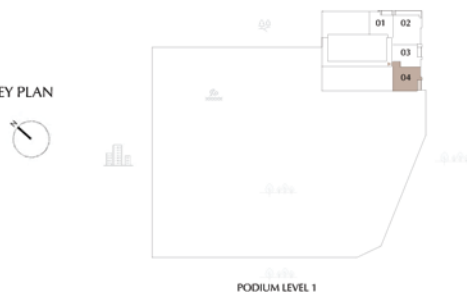
UNIT P1-04

SUITE AREA	816.98 SQ.FT.	75.90 SQ.M.
BALCONY AREA	71.47 SQ.FT.	6.64 SQ.M.
TOTAL AREA	888.45 SQ.FT.	82.54 SQ.M.

KEY SECTION



KEY PLAN



PODIUM LEVEL 1



POOR PLAN 1. All dimensions are in imperial and metric, and measured from finish to finish excluding construction tolerances. 2. All materials, dimensions, and drawings are approximate only. 3. Information is subject to change without notice, developer's absolute discretion. 4. Actual area may vary from the stated area. 5. Drawings not to scale. 6. All images used are for illustrative purposes only and do not represent the actual size, features, specifications, fittings, and furnishings. The developer reserves the right to make revisions / alterations, at it's absolute discretion, without any liability whatsoever.

EMAAL

MONTIVA

BY VIDA

DUBAI CREEK HARBOUR

1 BEDROOM-TYPE 1

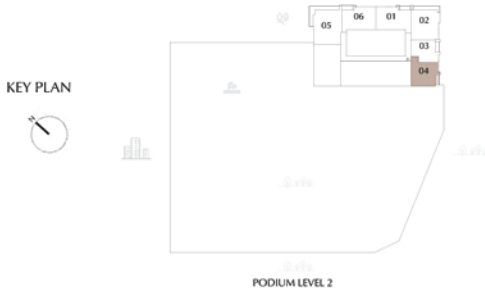
UNIT P2-04

SUITE AREA	820.86 SQ.FT.	76.26 SQ.M.
BALCONY AREA	71.69 SQ.FT.	6.66 SQ.M.
TOTAL AREA	892.55 SQ.FT.	82.92 SQ.M.

KEY SECTION



KEY PLAN



FOR PLAN 1. All dimensions are in imperial and metric, and measured from finish to finish excluding construction tolerances. 2. All materials, dimensions, and drawings are approximate only. 3. Information is subject to change without notice, developer's absolute discretion. 4. Actual area may vary from the stated area. 5. Drawings not to scale. 6. All images used are for illustrative purposes only and do not represent the actual size, features, specifications, fittings, and furnishings. The developer reserves the right to make revisions / alterations, at it's absolute discretion, without any liability whatsoever.

EMAAL

MONTIVA

BY VIDA

DUBAI CREEK HARBOUR

1 BEDROOM-TYPE 2

UNIT P1-03, P2-03, 103, 203-2203 ,2303, 2403-4703

SUITE AREA	680.17 SQ.FT.	63.19 SQ.M.
BALCONY AREA	74.70 SQ.FT.	6.94 SQ.M.
TOTAL AREA	754.87 SQ.FT.	70.13 SQ.M.

KEY SECTION



KEY PLAN



1. All dimensions are in imperial and metric, and measured from finish to finish excluding construction tolerances. 2. All materials, dimensions, and drawings are approximate only. 3. Information is subject to change without notice, at the developer's absolute discretion. 4. Actual area may vary from the stated area. 5. Drawings not to scale. 6. All images used are for illustrative purposes only and do not represent the actual size, features, specifications, fittings, and furnishings. The developer reserves the right to make revisions / alterations, at its absolute discretion, without any liability whatsoever.

EMAAR

MONTIVA

BY VIDA

DUBAI CREEK HARBOUR

1 BEDROOM-TYPE 3 UNIT P1-01

SUITE AREA	710.20 SQ.FT.	65.98 SQ.M.
BALCONY AREA	83.64 SQ.FT.	7.77 SQ.M.
TOTAL AREA	793.84 SQ.FT.	73.75 SQ.M.

KEY SECTION



KEY PLAN



PODIUM LEVEL 1



DOOR PLAN 1. All dimensions are in imperial and metric, and measured from finish to finish excluding construction tolerances. 2. All materials, dimensions, and drawings are approximate only. 3. Information is subject to change without notice, developer's absolute discretion. 4. Actual area may vary from the stated area. 5. Drawings not to scale. 6. All images used are for illustrative purposes only and do not represent the actual size, features, specifications, fittings, and furnishings. The developer reserves the right to make revisions / alterations, at it's absolute discretion, without any liability whatsoever.

EMAAL

MONTIVA

BY VIDA

DUBAI CREEK HARBOUR

1 BEDROOM-TYPE 4A

UNIT 105

SUITE AREA	712.25 SQ.FT.	66.17 SQ.M.
TERRACE AREA	286.32 SQ.FT.	26.60 SQ.M.
TOTAL AREA	998.57 SQ.FT.	92.77 SQ.M.

KEY SECTION



KEY PLAN



MONTIVA

BY VIDA

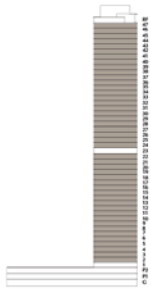
DUBAI CREEK HARBOUR

1 BEDROOM-TYPE 4B

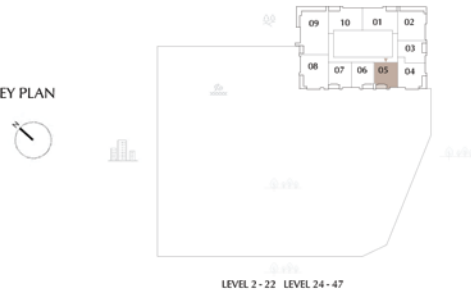
UNIT 205-2205, 2405 - 4705

SUITE AREA	696.64 SQ.FT.	64.72 SQ.M.
BALCONY AREA	89.34 SQ.FT.	8.30 SQ.M.
TOTAL AREA	785.98 SQ.FT.	73.02 SQ.M.

KEY SECTION



KEY PLAN



DOOR PLAN 1. All dimensions are in imperial and metric, and measured from finish to finish excluding construction tolerances. 2. All materials, dimensions, and drawings are approximate only. 3. Information is subject to change without notice, developer's absolute discretion. 4. Actual area may vary from the stated area. 5. Drawings not to scale. 6. All images used are for illustrative purposes only and do not represent the actual size, features, specifications, fittings, and furnishings. The developer reserves the right to make revisions / alterations, at it's absolute discretion, without any liability whatsoever.

EMAAL

MONTIVA

BY VIDA

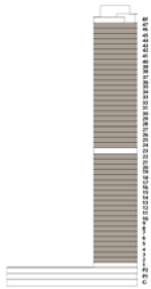
DUBAI CREEK HARBOUR

1 BEDROOM-TYPE 5A

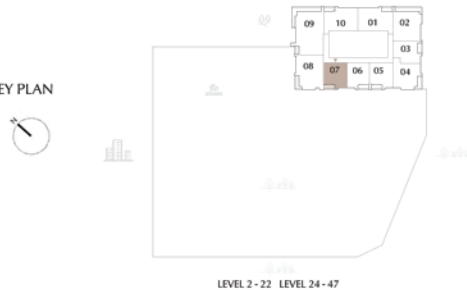
UNIT 207-2207, 2407 - 4707

SUITE AREA	675.33 SQ.FT.	62.74 SQ.M.
BALCONY AREA	89.88 SQ.FT.	8.35 SQ.M.
TOTAL AREA	765.21 SQ.FT.	71.09 SQ.M.

KEY SECTION



KEY PLAN



LEVEL 2 - 22 LEVEL 24 - 47



DOR PLAN 1. All dimensions are in imperial and metric, and measured from finish to finish excluding construction tolerances. 2. All materials, dimensions, and drawings are approximate only. 3. Information is subject to change without notice, developer's absolute discretion. 4. Actual area may vary from the stated area. 5. Drawings not to scale. 6. All images used are for illustrative purposes only and do not represent the actual size, features, specifications, fittings, and furnishings. The developer reserves the right to make revisions / alterations, at it's absolute discretion, without any liability whatsoever.

EMAAL

MONTIVA

BY VIDA

DUBAI CREEK HARBOUR

1 BEDROOM-TYPE 5B

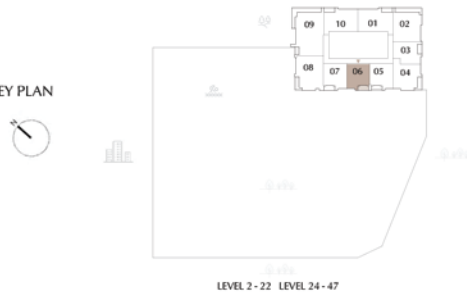
UNIT 206-2206, 2406 - 4706

SUITE AREA	671.88 SQ.FT.	62.42 SQ.M.
BALCONY AREA	88.37 SQ.FT.	8.21 SQ.M.
TOTAL AREA	760.25 SQ.FT.	70.63 SQ.M.

KEY SECTION



KEY PLAN



LEVEL 2 - 22 LEVEL 24 - 47



DOR PLAN 1. All dimensions are in imperial and metric, and measured from finish to finish excluding construction tolerances. 2. All materials, dimensions, and drawings are approximate only. 3. Information is subject to change without notice, developer's absolute discretion. 4. Actual area may vary from the stated area. 5. Drawings not to scale. 6. All images used are for illustrative purposes only and do not represent the actual size, features, specifications, fittings, and furnishings. The developer reserves the right to make revisions / alterations, at it's absolute discretion, without any liability whatsoever.

EMAAL

MONTIVA

BY VIDA

DUBAI CREEK HARBOUR

1 BEDROOM-TYPE 6A

UNIT 104

SUITE AREA	819.56 SQ.FT.	76.14 SQ.M.
TERRACE AREA	441.21 SQ.FT.	40.99 SQ.M.
TOTAL AREA	1260.77 SQ.FT.	117.13 SQ.M.

KEY SECTION



KEY PLAN



DOR PLAN 1. All dimensions are in imperial and metric, and measured from finish to finish excluding construction tolerances. 2. All materials, dimensions, and drawings are approximate only. 3. Information is subject to change without notice, developer's absolute discretion. 4. Actual area may vary from the stated area. 5. Drawings not to scale. 6. All images used are for illustrative purposes only and do not represent the actual size, features, specifications, fittings, and furnishings. The developer reserves the right to make revisions / alterations, at it's absolute discretion, without any liability whatsoever.

EMAAL

MONTIVA

BY VIDA

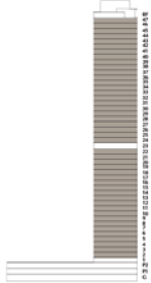
DUBAI CREEK HARBOUR

1 BEDROOM-TYPE 6B

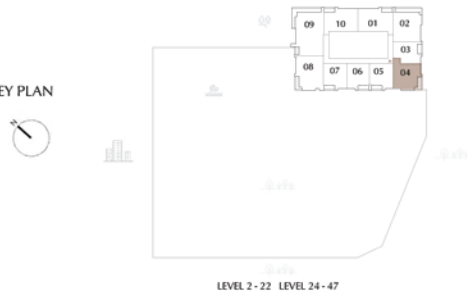
UNIT 204 - 2204, 2404 - 4704

SUITE AREA	819.56 SQ.FT.	76.14 SQ.M.
BALCONY AREA	95.05 SQ.FT.	8.83 SQ.M.
TOTAL AREA	914.61 SQ.FT.	84.97 SQ.M.

KEY SECTION



KEY PLAN



DOOR PLAN 1. All dimensions are in imperial and metric, and measured from finish to finish excluding construction tolerances. 2. All materials, dimensions, and drawings are approximate only. 3. Information is subject to change without notice, developer's absolute discretion. 4. Actual area may vary from the stated area. 5. Drawings not to scale. 6. All images used are for illustrative purposes only and do not represent the actual size, features, specifications, fittings, and furnishings. The developer reserves the right to make revisions / alterations, at it's absolute discretion, without any liability whatsoever.

EMAAL

MONTIVA

BY VIDA

DUBAI CREEK HARBOUR

2 BEDROOM-TYPE 1

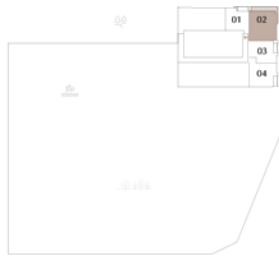
UNIT P1-02, P2-02

SUITE AREA	1065.73 SQ.FT.	99.01 SQ.M.
BALCONY AREA	180.40 SQ.FT.	16.76 SQ.M.
TOTAL AREA	1246.13 SQ.FT.	115.77 SQ.M.

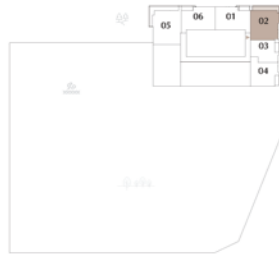
KEY SECTION



KEY PLAN



PODIUM LEVEL 1



PODIUM LEVEL 2



DOOR PLAN 1. All dimensions are in imperial and metric, and measured from finish to finish excluding construction tolerances. 2. All materials, dimensions, and drawings are approximate only. 3. Information is subject to change without notice, developer's absolute discretion. 4. Actual area may vary from the stated area. 5. Drawings not to scale. 6. All images used are for illustrative purposes only and do not represent the actual size, features, specifications, fittings, and furnishings. The developer reserves the right to make revisions / alterations, at it's absolute discretion, without any liability whatsoever.

EMAAL

MONTIVA

BY VIDA

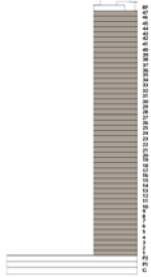
DUBAI CREEK HARBOUR

2 BEDROOM-TYPE 1

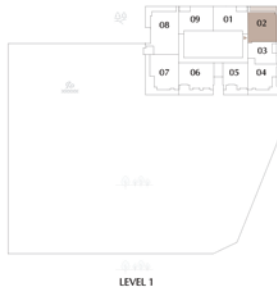
UNIT 102, 202-2202, 2302, 2402 - 4702

SUITE AREA	1058.85 SQ.FT.	98.37 SQ.M.
BALCONY AREA	179.00 SQ.FT.	16.63 SQ.M.
TOTAL AREA	1237.85 SQ.FT.	115.00 SQ.M.

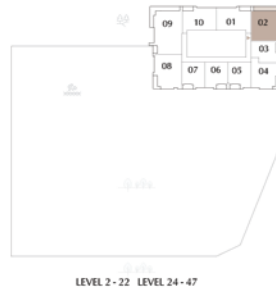
KEY SECTION



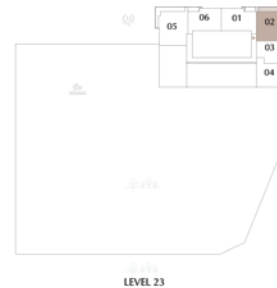
KEY PLAN



LEVEL 1



LEVEL 2-22 LEVEL 24-47



LEVEL 23



DOOR PLAN 1. All dimensions are in imperial and metric, and measured from finish to finish excluding construction tolerances. 2. All materials, dimensions, and drawings are approximate only. 3. Information is subject to change without notice, developer's absolute discretion. 4. Actual area may vary from the stated area. 5. Drawings not to scale. 6. All images used are for illustrative purposes only and do not represent the actual size, features, specifications, fittings, and furnishings. The developer reserves the right to make revisions / alterations, at it's absolute discretion, without any liability whatsoever.

EMAAL

MONTIVA

BY VIDA

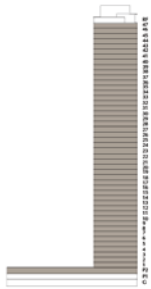
DUBAI CREEK HARBOUR

2 BEDROOM-TYPE 2A

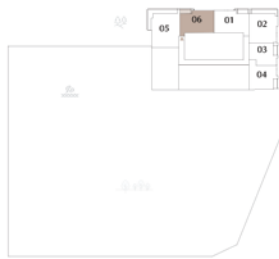
UNIT P2-06, 109, 210-2210, 2305, 2410 - 4710

SUITE AREA	1058.09 SQ.FT.	98.30 SQ.M.
BALCONY AREA	85.03 SQ.FT.	7.90 SQ.M.
TOTAL AREA	1143.12 SQ.FT.	106.20 SQ.M.

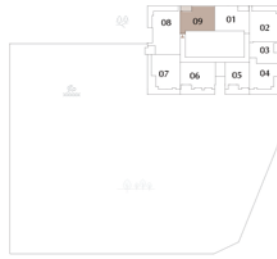
KEY SECTION



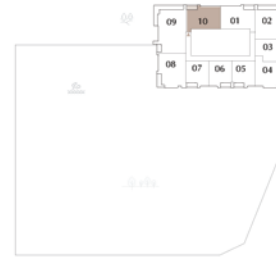
KEY PLAN



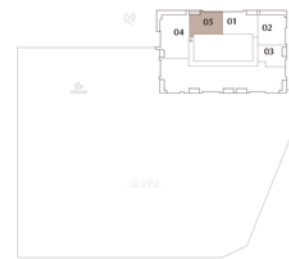
PODIUM LEVEL 2



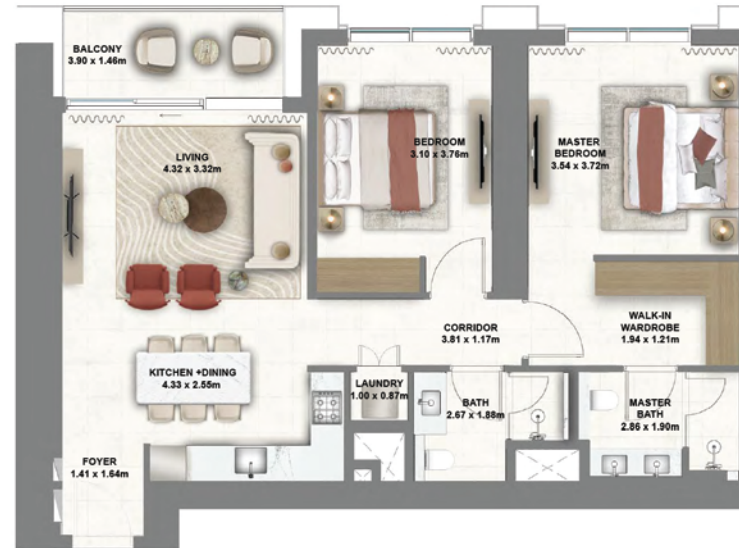
LEVEL 1



LEVEL 2-22 LEVEL 24-47



LEVEL 23



DOOR PLAN 1. All dimensions are in imperial and metric, and measured from finish to finish excluding construction tolerances. 2. All materials, dimensions, and drawings are approximate only. 3. Information is subject to change without notice, developer's absolute discretion. 4. Actual area may vary from the stated area. 5. Drawings not to scale. 6. All images used are for illustrative purposes only and do not represent the actual size, features, specifications, fittings, and furnishings. The developer reserves the right to make revisions / alterations, at it's absolute discretion, without any liability whatsoever.

EMAAL

MONTIVA

BY VIDA

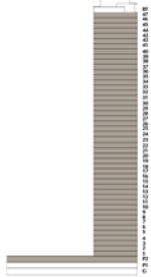
DUBAI CREEK HARBOUR

2 BEDROOM-TYPE 2B

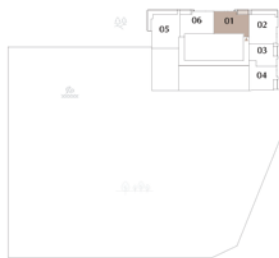
UNIT P2-01, 101, 201-2201, 2301, 2401 - 4701

SUITE AREA	1058.20 SQ.FT.	98.31 SQ.M.
BALCONY AREA	85.03 SQ.FT.	7.90 SQ.M.
TOTAL AREA	1143.23 SQ.FT.	106.21 SQ.M.

KEY SECTION



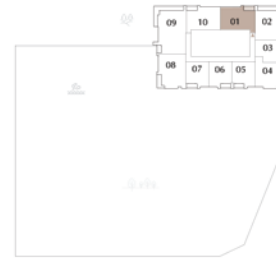
KEY PLAN



PODIUM LEVEL 2



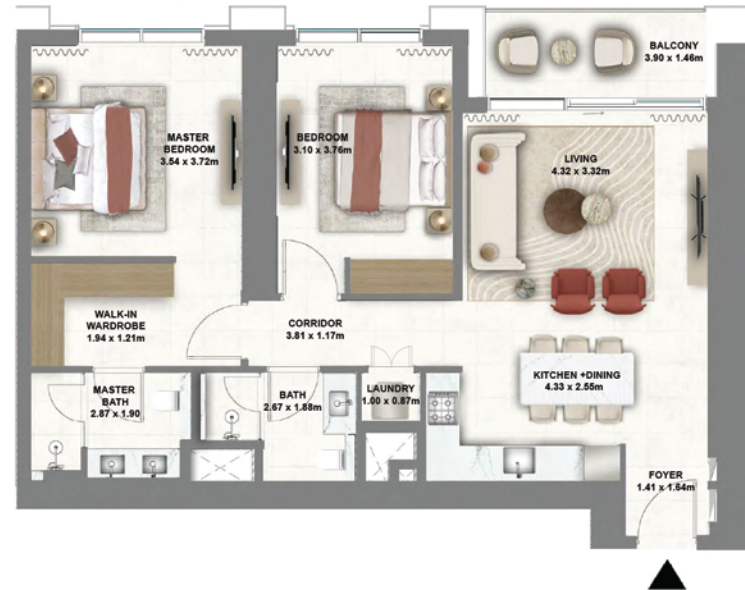
LEVEL 1



LEVEL 2 - 22 LEVEL 24 - 47



LEVEL 23



DOOR PLAN 1. All dimensions are in imperial and metric, and measured from finish to finish excluding construction tolerances. 2. All materials, dimensions, and drawings are approximate only. 3. Information is subject to change without notice, developer's absolute discretion. 4. Actual area may vary from the stated area. 5. Drawings not to scale. 6. All images used are for illustrative purposes only and do not represent the actual size, features, specifications, fittings, and furnishings. The developer reserves the right to make revisions / alterations, at it's absolute discretion, without any liability whatsoever.

EMAAL

MONTIVA

BY VIDA

DUBAI CREEK HARBOUR

2 BEDROOM-TYPE 3

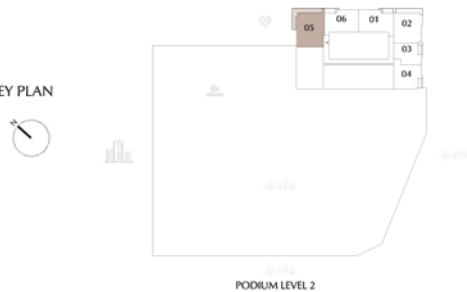
UNIT P2-05

SUITE AREA	1176.50 SQ.FT.	109.30 SQ.M.
BALCONY AREA	300.42 SQ.FT.	27.91 SQ.M.
TOTAL AREA	1476.92 SQ.FT.	137.21 SQ.M.

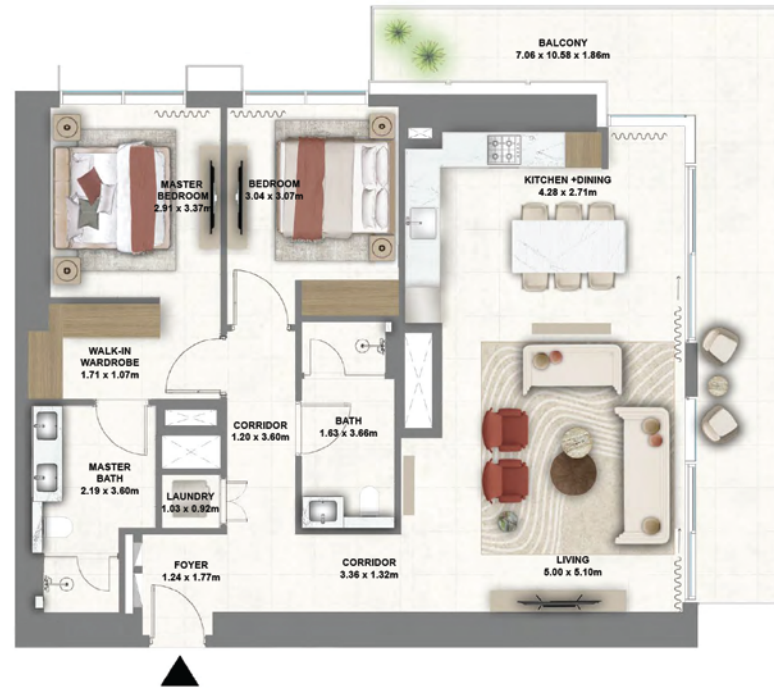
KEY SECTION



KEY PLAN



PODIUM LEVEL 2



DOOR PLAN 1. All dimensions are in imperial and metric, and measured from finish to finish excluding construction tolerances. 2. All materials, dimensions, and drawings are approximate only. 3. Information is subject to change without notice, developer's absolute discretion. 4. Actual area may vary from the stated area. 5. Drawings not to scale. 6. All images used are for illustrative purposes only and do not represent the actual size, features, specifications, fittings, and furnishings. The developer reserves the right to make revisions / alterations, at it's absolute discretion, without any liability whatsoever.

EMAAL

MONTIVA

BY VIDA

DUBAI CREEK HARBOUR

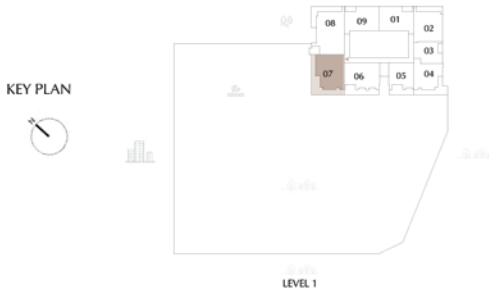
2 BEDROOM-TYPE 4A UNIT 107

SUITE AREA	1106.53 SQ.FT.	102.80 SQ.M.
TERRACE AREA	651.86 SQ.FT.	60.56 SQ.M.
TOTAL AREA	1758.39 SQ.FT.	163.36 SQ.M.

KEY SECTION



KEY PLAN



DOR PLAN 1. All dimensions are in imperial and metric, and measured from finish to finish excluding construction tolerances. 2. All materials, dimensions, and drawings are approximate only. 3. Information is subject to change without notice, developer's absolute discretion. 4. Actual area may vary from the stated area. 5. Drawings not to scale. 6. All images used are for illustrative purposes only and do not represent the actual size, features, specifications, fittings, and furnishings. The developer reserves the right to make revisions / alterations, at it's absolute discretion, without any liability whatsoever.

MONTIVA

BY VIDA

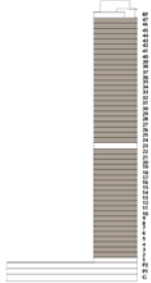
DUBAI CREEK HARBOUR

2 BEDROOM-TYPE 4B

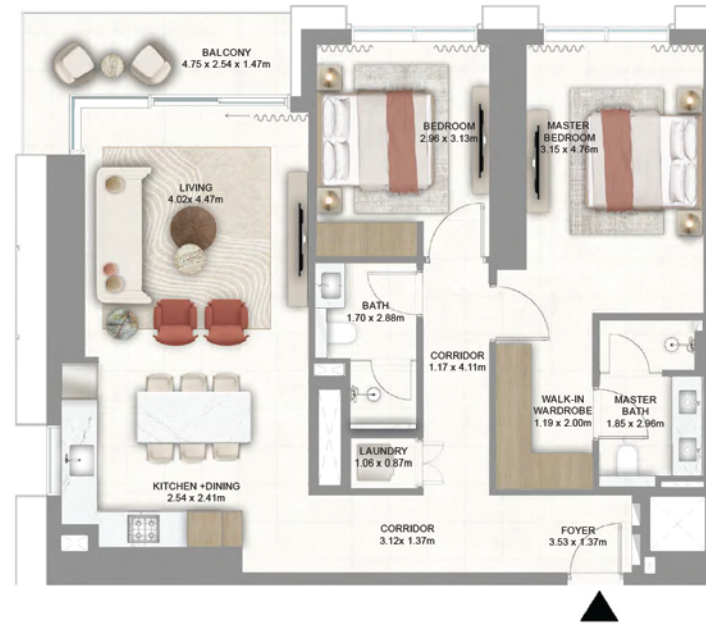
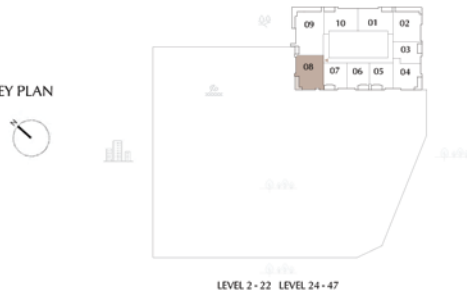
UNIT 208 - 2208, 2408 - 4708

SUITE AREA	1106.21 SQ.FT.	102.77 SQ.M.
BALCONY AREA	99.14 SQ.FT.	9.21 SQ.M.
TOTAL AREA	1205.35 SQ.FT.	111.98 SQ.M.

KEY SECTION



KEY PLAN



FOR PLAN 1. All dimensions are in imperial and metric, and measured from finish to finish excluding construction tolerances. 2. All materials, dimensions, and drawings are approximate only. 3. Information is subject to change without notice, developer's absolute discretion. 4. Actual area may vary from the stated area. 5. Drawings not to scale. 6. All images used are for illustrative purposes only and do not represent the actual size, features, specifications, fittings, and furnishings. The developer reserves the right to make revisions / alterations, at it's absolute discretion, without any liability whatsoever.

EMAAL

MONTIVA

BY VIDA

DUBAI CREEK HARBOUR

2 BEDROOM-TYPE 5

UNIT 106

SUITE AREA	1013.64 SQ.FT.	94.17 SQ.M.
TERRACE AREA	397.40 SQ.FT.	36.92 SQ.M.
TOTAL AREA	1411.04 SQ.FT.	131.09 SQ.M.

KEY SECTION



KEY PLAN



MONTIVA

BY VIDA

DUBAI CREEK HARBOUR

3 BEDROOM-TYPE 1

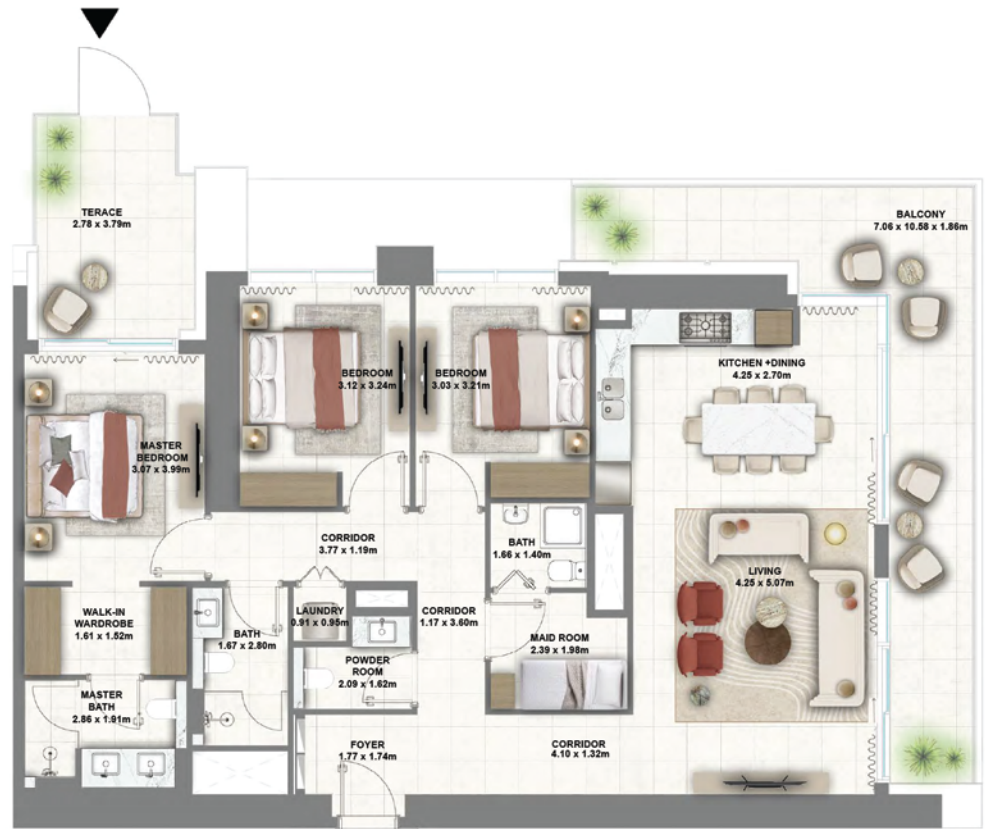
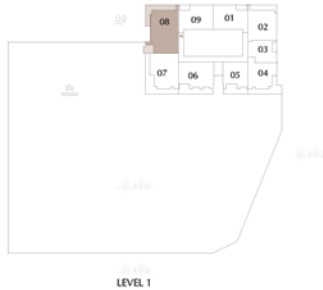
UNIT 108

SUITE AREA	1471.10 SQ.FT.	136.67 SQ.M.
BALCONY AREA	439.71 SQ.FT.	40.85 SQ.M.
TOTAL AREA	1910.81 SQ.FT.	177.52 SQ.M.

KEY SECTION



KEY PLAN



MONTIVA

BY VIDA

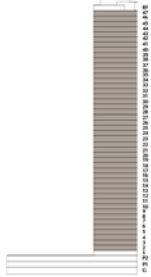
DUBAI CREEK HARBOUR

3 BEDROOM-TYPE 1

UNIT 209 - 2209, 2304, 2409 - 4709

SUITE AREA	1471.32 SQ.FT.	136.69 SQ.M.
BALCONY AREA	363.50 SQ.FT.	33.77 SQ.M.
TOTAL AREA	1834.82 SQ.FT.	170.46 SQ.M.

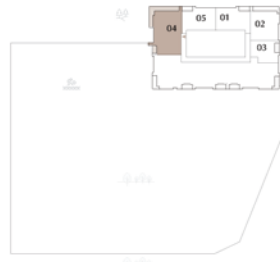
KEY SECTION



KEY PLAN



LEVEL 2 - 22 LEVEL 24 - 47



LEVEL 23



DOOR PLAN 1. All dimensions are in imperial and metric, and measured from finish to finish excluding construction tolerances. 2. All materials, dimensions, and drawings are approximate only. 3. Information is subject to change without notice, developer's absolute discretion. 4. Actual area may vary from the stated area. 5. Drawings not to scale. 6. All images used are for illustrative purposes only and do not represent the actual size, features, specifications, fittings, and furnishings. The developer reserves the right to make revisions / alterations, at it's absolute discretion, without any liability whatsoever.

EMAAL


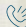

MONTIVA

BY VIDA

DUBAI CREEK HARBOUR

FOR MORE INFORMATION PLEASE CONTACT



 +971 55 476 7630
 +971 4 368 7878
 info@afsrealestate.com
 www.afsrealestate.com



 +971 50 674 2020
 +971 4 368 7878
 info@dubricks.com
 www.dubricks.com

EMAAR