



# SOLA

R E S I D E N C E S


---

**FS**  
REAL ESTATE  
STAY AHEAD, INVEST SMART

**db**  
DUBRICKS  
POSSIBILITIES ARE LIMITLESS

---





Dynamic Living,  
Purposeful Spaces



# Location Map

04 min  
Energy Metro Station

05 min  
Festival Plaza / IKEA

08 min  
Ibn Battuta Mall

09 min  
Aster Cedars Hospital

10 min  
Arbor School

17 min  
Palm Jumeirah

18 min  
Dubai Miracle Garden

20 min  
Madinat Jumeirah

25 min  
Mall of the Emirates

28 min  
Dubai Mall

30 min  
Global Village

30 min  
Al Maktoum International Airport

35 min  
Dubai International Airport

SOLA  
RESIDENCES





# SOLA

R E S I D E N C E S





# Easy Living, Connected Spaces

Wasl Gate is a dynamic master development that brings the best of Jebel Ali to your doorstep. Located along Sheikh Zayed Road, it offers direct access to the Energy Metro Station and is just a short drive from Al Maktoum International Airport and Expo 2020.

With a perfect mix of residences, retail, dining, and entertainment options, Wasl Gate creates a vibrant community where everything is within reach. From bustling boulevards to family-friendly parks, it's a place where convenience meets connection, making it the ideal spot for work, leisure, and living.

- 1 Energy Metro Station
- 2 Sheikh Zayed Road
- 3 Festival Plaza Mall / IKEA
- 4 Central Park
- 5 School
- 6 Corridor of Tolerance

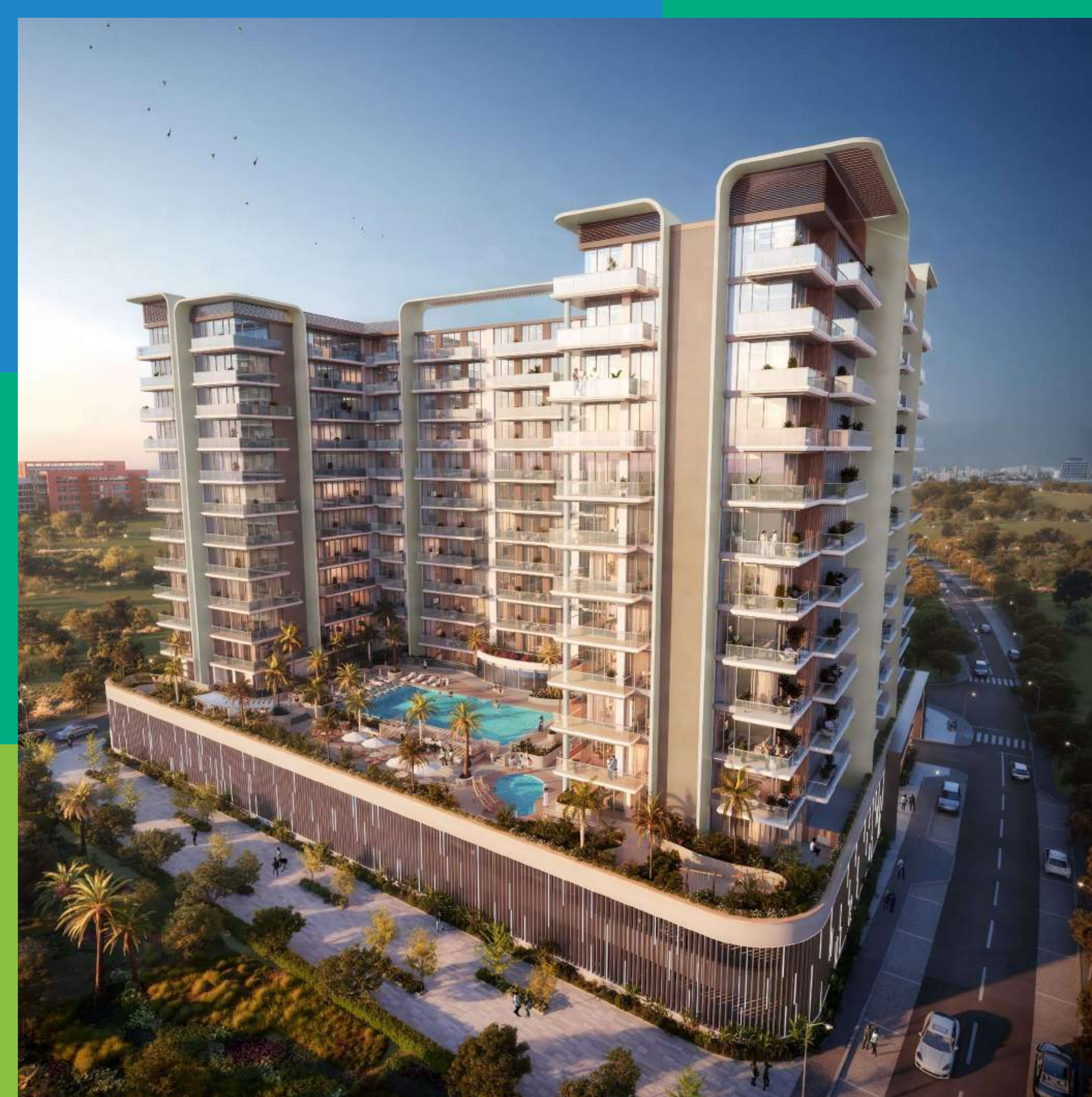




## Plot Location







## Vibrant Living, Inspired Spaces

Sola Residences is the perfect place for families seeking a peaceful yet connected lifestyle. With spacious, thoughtfully designed homes, this development offers a serene retreat in the heart of the city, complemented by premium amenities that enhance everyday living.

It offers the perfect balance between city convenience and tranquil living, with everything you need right at your doorstep.



# Wasl

## Wasl as a Master Developer

A visionary force in Dubai's real estate landscape, Wasl has been shaping communities since 2008 under the leadership of Dubai Real Estate Corporation (DREC). As one of the largest real estate management companies in the region, Wasl oversees a diverse portfolio of over 40,000 properties, including residential, commercial, and hospitality developments.

With a commitment to excellence and innovation, Wasl plays a pivotal role in transforming Dubai's urban fabric, creating vibrant, sustainable communities that cater to residents, businesses, and visitors alike.





# Central Park

## Your Outdoor Retreat

At SOLA Residences, enjoy the benefits of a central park right in your community. With expansive green areas, walking trails, and open spaces, it's the perfect spot for relaxation, outdoor activities, and quality time with family and friends. A true urban oasis where nature and convenience come together.





# Sheikh Zayed Road

## The Lifeline of Dubai

Living at SOLA Residences places you right next to Sheikh Zayed Road, Dubai's most iconic highway. This bustling artery connects you effortlessly to the city's key business districts, leisure hubs, and iconic landmarks, offering quick access to Downtown Dubai, Dubai Marina, and Business Bay.

You'll be close to top dining, entertainment, and shopping destinations, making it perfect for professionals seeking a dynamic urban lifestyle where the pulse of Dubai is right outside your doorstep.





# Energy Metro Station

## Your Gateway to the City

Imagine having the Energy Metro Station just a short walk from your home. At SOLA Residences, this dream is a reality, offering unparalleled access to Dubai's world-class public transport network.

Beat the traffic with quick, eco-friendly metro commutes, save on transportation costs, and enjoy direct links to major business hubs, malls, and cultural landmarks, ensuring smart, easy, and connected living.





# Corridor of Tolerance

## Where Faith, Culture and Community Unite

SOLA Residences is near the Corridor of Tolerance, home to a variety of churches, temples, and places of worship, reflecting Dubai's rich cultural tapestry and commitment to inclusivity.

This unique space offers easy access to spiritual centers for diverse faiths, fostering a neighborhood that embraces unity, respect for all traditions, and vibrant multicultural events that strengthen community connections.





# Festival Plaza Mall, IKEA

## Retail Therapy at your Doorstep

Living at SOLA Residences means being minutes away from Festival Plaza Mall, featuring IKEA, ACE, and a variety of dining and retail outlets. This convenient hub simplifies your life with easy access to home essentials, fashion, groceries, and entertainment options.

It's the perfect spot for family weekends, casual dining, and stress-free shopping, all just around the corner.

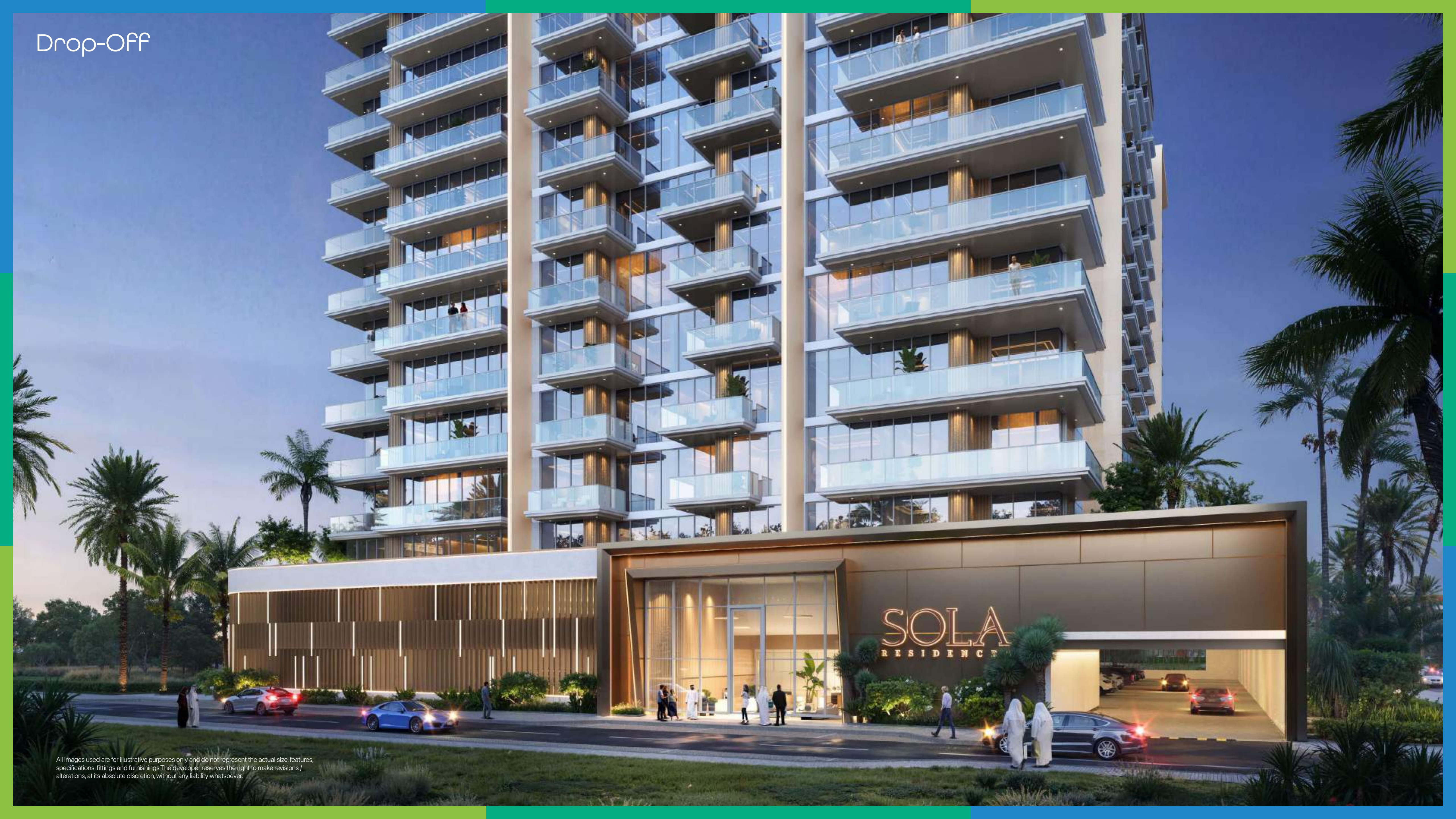








Drop-Off



All images used are for illustrative purposes only and do not represent the actual size, features, specifications, fittings and furnishings. The developer reserves the right to make revisions / alterations, at its absolute discretion, without any liability whatsoever.



Lobby



All images used are for illustrative purposes only and do not represent the actual size, features, specifications, fittings and furnishings. The developer reserves the right to make revisions / alterations, at its absolute discretion, without any liability whatsoever.



Lobby



All images used are for illustrative purposes only and do not represent the actual size, features, specifications, fittings and furnishings. The developer reserves the right to make revisions / alterations, at its absolute discretion, without any liability whatsoever.







Living Room



All images used are for illustrative purposes only and do not represent the actual size, features, specifications, fittings and furnishings. The developer reserves the right to make revisions, alterations, at its absolute discretion, without any liability whatsoever.



Living Room



All images used are for illustrative purposes only and do not represent the actual size, features, specifications, fittings and furnishings. The developer reserves the right to make revisions / alterations, at its absolute discretion, without any liability whatsoever.



Living Room



All images used are for illustrative purposes only and do not represent the actual size, features, specifications, fittings and furnishings. The developer reserves the right to make revisions / alterations, at its absolute discretion, without any liability whatsoever.



# Bedroom



All images used are for illustrative purposes only and do not represent the actual size, features, specifications, fittings and furnishings. The developer reserves the right to make revisions / alterations, at its absolute discretion, without any liability whatsoever.



Bedroom

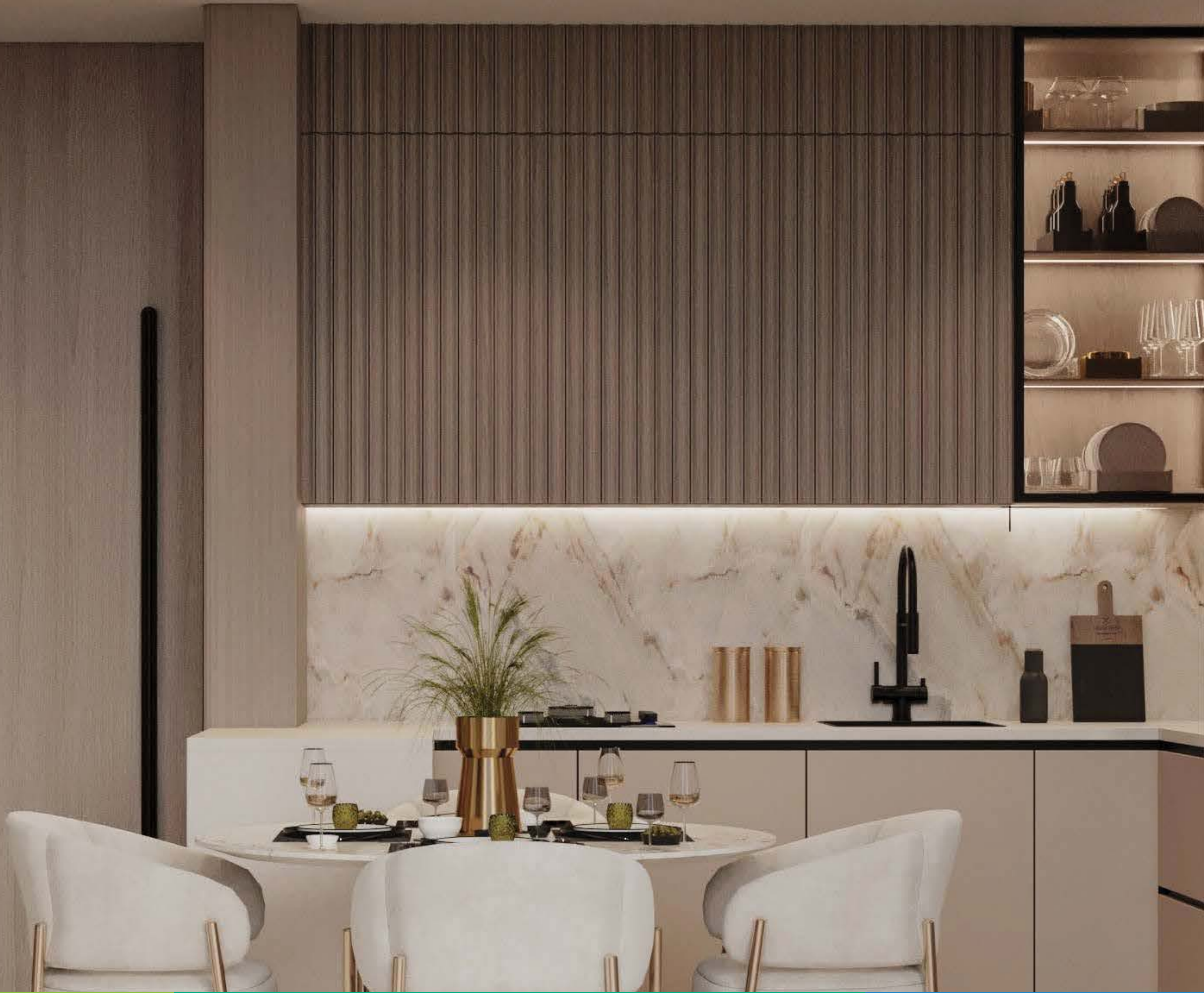


All images used are for illustrative purposes only and do not represent the actual size, features, specifications, fittings and furnishings. The developer reserves the right to make revisions / alterations, at its absolute discretion, without any liability whatsoever.



Kitchen

All images used are for illustrative purposes only and do not represent the actual size, features, specifications, fittings and furnishings. The developer reserves the right to make revisions / alterations, at its absolute discretion, without any liability whatsoever.





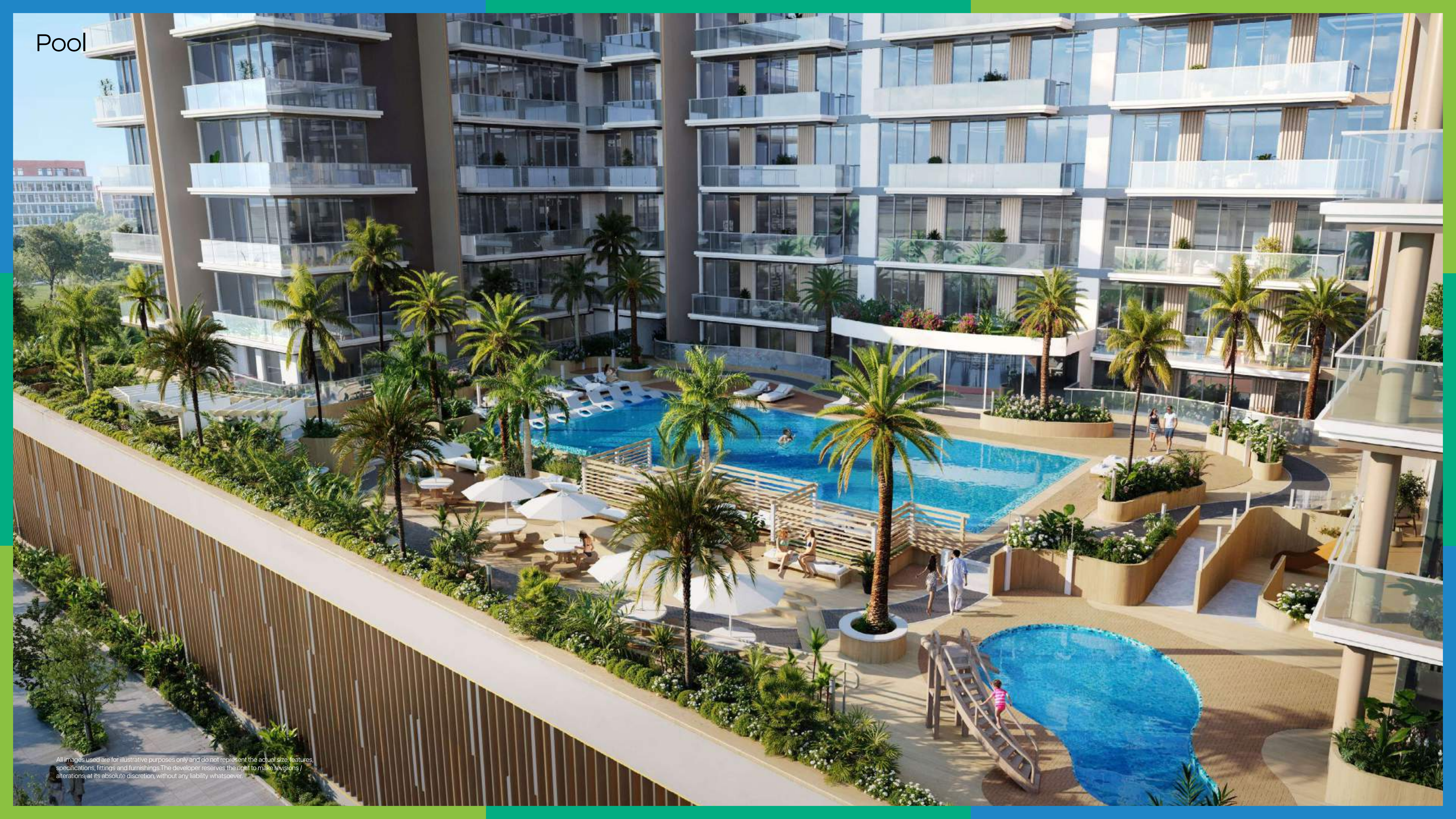
Bathroom



All images used are for illustrative purposes only and do not represent the actual size, features, specifications, fittings and furnishings. The developer reserves the right to make revisions / alterations, at its absolute discretion, without any liability whatsoever.



Pool



All images used are for illustrative purposes only and do not represent the actual size, features, specifications, fittings and furnishings. The developer reserves the right to make revisions / alterations, at its absolute discretion, without any liability whatsoever.



Pool



All images used are for illustrative purposes only and do not represent the actual size, features, specifications, fittings and furnishings. The developer reserves the right to make revisions / alterations, at its absolute discretion, without any liability whatsoever.















# Multipurpose Room



All images used are for illustrative purposes only and do not represent the actual size, features, specifications, fittings and furnishings. The developer reserves the right to make revisions / alterations, at its absolute discretion, without any liability whatsoever.



# Multipurpose Room



All images used are for illustrative purposes only and do not represent the actual size, features, specifications, fittings and furnishings. The developer reserves the right to make revisions / alterations, at its absolute discretion, without any liability whatsoever.



# Multipurpose Room



All images used are for illustrative purposes only and do not represent the actual size, features, specifications, fittings and furnishings. The developer reserves the right to make revisions / alterations, at its absolute discretion, without any liability whatsoever.











Kids Club



All images used are for illustrative purposes only and do not represent the actual size, features, specifications, fittings and furnishings. The developer reserves the right to make revisions / alterations, at its absolute discretion, without any liability whatsoever.









CENTURION

## Building Tomorrow's Urban Legacy

Centurion Developers is a leader in reshaping urban environments through innovative, sustainable real estate development.

Focused on creating vibrant communities where people can live, work, and relax, we blend cutting-edge design with environmental stewardship to ensure our projects are both functional and future-ready.









# SOLA

R E S I D E N C E S

FOR MORE INFORMATION PLEASE CONTACT



STAY AHEAD, INVEST SMART

 +971 55 476 7630  
 +971 4 368 7878  
 [info@afsrealestate.com](mailto:info@afsrealestate.com)  
 [www.afsrealestate.com](http://www.afsrealestate.com)



DUBRICKS

POSSIBILITIES ARE LIMITLESS

 +971 50 674 2020  
 +971 4 368 7878  
 [info@dubricks.com](mailto:info@dubricks.com)  
 [www.dubricks.com](http://www.dubricks.com)