



# THE mural

BY BEYOND



DIGITAL BROCHURE





# TABLE OF CONTENTS

*Chapter 1*  
Location

Dubai Maritime City—a serene coastal sanctuary blending natural beauty with urban connectivity.

*Chapter 3*  
Interiors

Nature inspired elegant residences crafted with seamless indoor-outdoor flow and thoughtful, luxurious touches.

*Chapter 5*  
Developer

A trusted vision brought to life through expertise and a commitment to excellence.

*Chapter 2*  
Project

An architectural icon offering timeless design and effortless sophistication near Dubai’s main attractions.

*Chapter 4*  
Amenities

Curated spaces and services designed for well-being, leisure, and an elevated lifestyle.





*Your home is curated to inspire and grow*

# A MASTERPIECE IN THE MAKING

WELCOME TO THE MURAL, AN EXCLUSIVE  
WATERFRONT RESIDENCE WHERE ARTISTRY  
MEETS ELEGANCE.

Nestled in Dubai Maritime City, The Mural combines  
breathtaking ocean and forest views along with  
meticulously curated details. Every space is designed to  
inspire and create a new standard of living near the heart  
of Dubai.





CHAPTER 1

# *The Location*





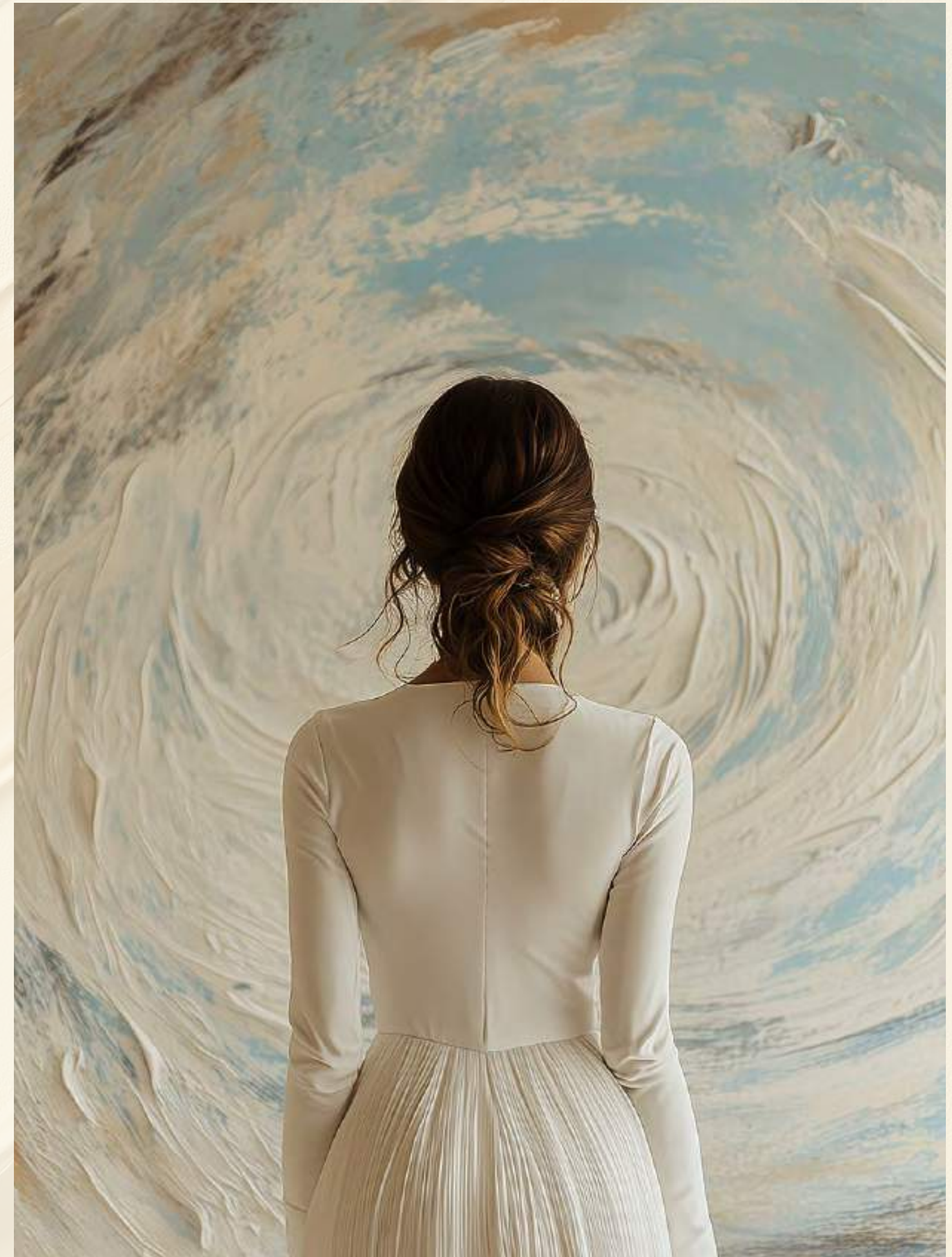
*Exceptional balance*

# WHERE INSPIRED DESIGN MEETS COASTAL LUXURY

INSPIRED DESIGN, EXQUISITE DETAILS AND  
BEACHFRONT LIVING COMBINE TO ELEVATE  
YOUR WORLD.

The Mural offers an exceptional balance – close enough  
to Dubai's business heart, yet beautifully positioned to  
embrace its serene coastal beauty.

Here, luxury is not just a lifestyle; it's an art form.





# THE mural

Collegiate International School

JUMEIRAH

Safa British School

DIFC

Dubai Mall

Business Bay

Downtown Dubai

DUBAI

Clemenceau Medical Center Hospital

Swiss International Scientific School in Dubai

Mina Rashid

Infinity Bridge

Gold Souk

International Modern Hospital

Burjuman

DEIRA

Dubai Hospital

The Elite English School

Canadian Specialist Hospital

Victoria International School

Pristine Private School Main Campus

The Apple International School Primary Campus

Dubai International Airport



THE LOCATION

*Culture, cuisine  
& coastal  
living converge*

THE  
mural



*A sanctuary of elegance and inspiration*

## A HIDDEN GEM OF SEASIDE TRANQUILITY & URBAN VIBRANCY

EXPLORE A VIBRANT NEIGHBOURHOOD FILLED  
WITH AL FRESCO DINING, ART GALLERIES AND  
BOUTIQUE SHOPPING.

Dubai Maritime City offers a unique blend of seaside  
tranquility and urban vibrancy. A hidden gem combining  
the peaceful charm of waterfront living with the energy and  
convenience of a modern city.





CHAPTER 2

# *The Project*





*Designed for those who seek beyond  
the traditional*

THE MURAL RISES 36 STORIES,  
BLENDING ARCHITECTURE AND NATURE  
IN PERFECT HARMONY, REDEFINING  
WATERFRONT ELEGANCE.





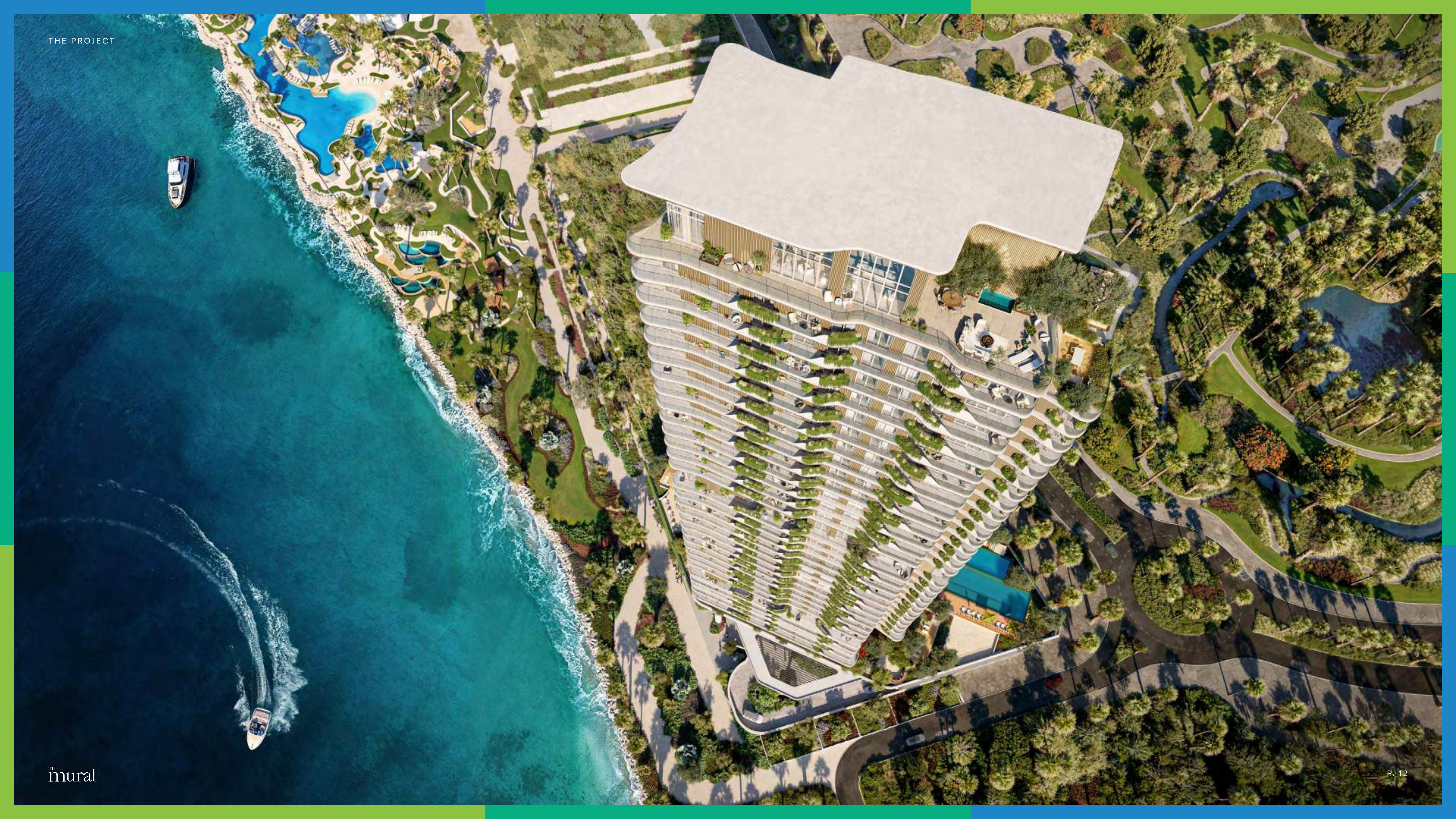
*Iconic*

# THE MURAL STANDS APART

UNIQUELY COMBINING STRIKING  
ARCHITECTURE AND SOPHISTICATED  
DETAILING.

With an iconic façade and spacious light-filled interiors  
providing unrivalled panoramic perspectives.







*Offering the best of all worlds*

# A VIBRANT COMMUNITY ON THE WATER'S EDGE

SEAMLESSLY BLENDING BOLD ARCHITECTURE  
WITH REFINED DETAILS, THE MURAL'S ICONIC  
FAÇADE AND EXPANSIVE, LIGHT-FILLED  
INTERIORS OFFER UNPARALLELED  
PANORAMIC VIEWS.

With 360-degree views of stunning skyline, forest and ocean  
horizon, The Mural connects you to the vibrancy of the city  
and the tranquility of coastal living.







THE  
mural

*Curated for you and for  
those with an eye for the  
finer things*





*Geometric precision and intricate detailing*

## ARTISTRY IN EVERY DETAIL

CURATED ARCHITECTURAL ELEMENTS COME TOGETHER TO FORM A BOLD ARCHITECTURAL STATEMENT.

Blending curved forms, geometric precision and intricate detailing. The tower's unique position ensures every residence enjoys panoramic views and sunset vistas from the inspired interiors.



An architectural rendering of a modern, multi-story building with a curved facade and large glass windows. The building features several balconies with glass railings, some of which are adorned with potted plants. The building is situated on a waterfront, with a body of water in the foreground and a city skyline visible in the distance under a sunset sky. The sun is low on the horizon, casting a warm glow over the scene. A long, narrow pier or breakwater extends into the water, and a few sailboats are visible on the water.

*Inspired by the natural world*

## TRANQUIL RETREATS, INSPIRED LIVING

NESTLED WITHIN THE SERENE WATERS, THE PROJECT  
FEATURES EXCLUSIVE TERRACES DESIGNED TO CREATE  
A HARMONIOUS BALANCE WHERE CREATIVITY IS  
INSPIRED BY THE NATURAL WORLD.



CHAPTER 3

# *The Interiors*





WHETHER YOU SEEK A COSY RETREAT, SPACIOUS  
FAMILY HOME, OR LUXURIOUS PENTHOUSE, THE  
MURAL HAS THE PERFECT SPACE FOR YOU



*Beautiful and inspired by design*

## SEAMLESSLY CONNECTED TO NATURE

FEATURING A COLLECTION OF 1-, 2- AND 3-BEDROOM APRTMENTS, EXPANSIVE 3-BEDROOM SIGNATURE COLLECTION AND MAISONETTES, AND A 4-BEDROOM PENTHOUSE SUITE.

Each residence is beautifully designed, and curated to create an inspiring space where you can relax and thrive. Seamlessly blending indoors and outdoors, private balconies with lush planters create a natural sanctuary in the sky.





EXPANSIVE FLOOR-TO-CEILING WINDOWS WELCOME  
NATURAL LIGHT, WHILE 3.2M-HIGH CEILINGS AMPLIFY THE  
FEELING OF SPACIOUSNESS.



*Your canvas awaits you*

EVERY SPACE IS DESIGNED TO BE MORE THAN JUST A HOME. IT'S READY TO BE AN EXPRESSION OF YOUR STYLE AND CREATIVITY.

Wraparound glazing creates an organic flow between indoor and outdoor spaces. The Mural's interiors embody effortless elegance and modern functionality, offering a serene yet contemporary sanctuary that feels personal, welcoming, and refined.





*Personal yet luxurious*

## FORM AND FUNCTION

BLENDING THE DAY-TO-DAY REQUIREMENTS  
OF AN ELEGANT LIVING SPACE WITH  
BEAUTIFUL DESIGN WITHOUT COMPROMISE.

From the bright warmth of the living room to the sleek  
functionality of the kitchen. Every stroke and line of  
your home has been considered to feel personal, yet  
luxurious.







*Exclusive privacy & panoramic elegance*

## ELEGANCE FRAMED BY WATERFRONT BEAUTY

THE PENTHOUSE AT THE MURAL EPITOMISES WATERFRONT LUXURY AND OFFERS EXPANSIVE TERRACES THAT BLEND SEAMLESS INDOOR-OUTDOOR LIVING WITH BREATHTAKING SEA AND SKYLINE VIEWS.

The Penthouse is crafted with open-plan interiors that embrace nature, creating a refined yet intimate sanctuary above the vibrant energy of Dubai Maritime City.









*Synonymous with waterfront elegance*

# YOUR PRIVATE SANCTUARY ABOVE THE CITY

Enveloped by lush greenery and enhanced with exquisite design elements, these residences are crafted to provide a haven of comfort and sophistication.





*The ultimate open - air living experience*

# SECLUDED LUXURY SURROUNDED BY NATURE

THE MAISONETTES AT THE MURAL REDEFINE OUTDOOR LIVING WITH THEIR EXPANSIVE PRIVATE TERRACES THAT SEAMLESSLY MERGE NATURE AND LUXURY.

Designed to evoke the serenity of a secluded retreat, these elevated spaces are framed by lush greenery and breathtaking sea views. Whether unwinding in a private oasis or entertaining under the open sky, these residences provide a harmonious balance of refinement and relaxation, creating a tranquil setting where modern elegance meets the soothing embrace of the sea.







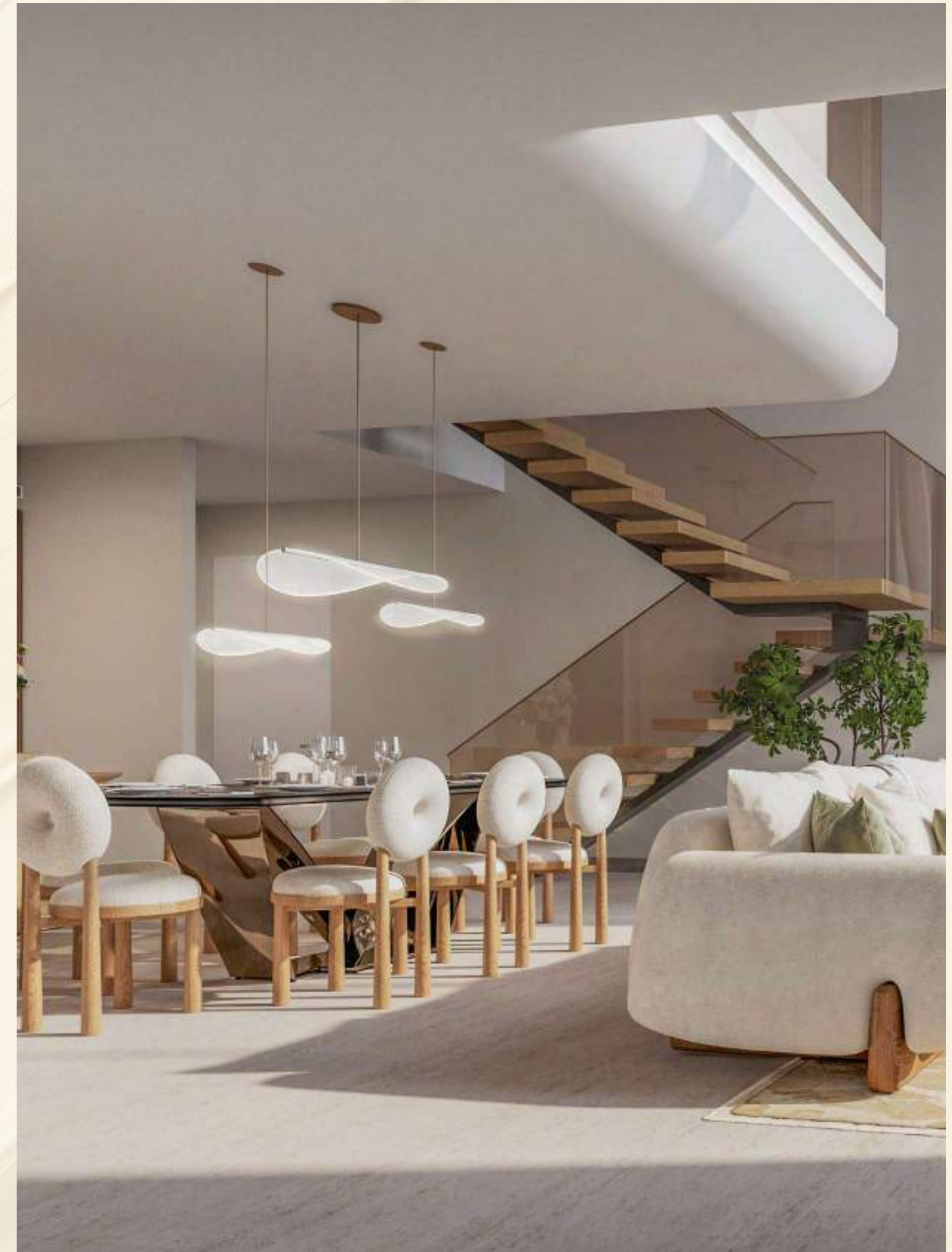


*Space and light*

## A HARMONIOUS FUSION OF GRANDEUR AND INTIMACY

THOUGHTFULLY CRAFTED ACROSS TWO LEVELS, EACH SIGNATURE COLLECTION HOME IS A SANCTUARY OF ELEGANCE, WHERE SOARING DOUBLE-HEIGHT CEILINGS AND FLOOR-TO-CEILING WINDOWS INVITE NATURAL LIGHT TO ILLUMINATE EVERY DETAIL.

Meticulously designed to offer both privacy and seamless living, the Signature Apartments are thoughtfully arranged across two levels. The upper level provides a serene retreat, with spacious bedrooms designed for tranquillity and comfort, while the lower level boasts a striking double-height (6.8m) living and dining area, enhancing the sense of openness and grandeur.









CHAPTER 4

# *The Amenities*





*Curated luxury,  
seamless comfort, inspired living*

## ELEVATING THE SENSES WITH LUXURY

THE FINEST COLLECTION OF  
SERVICES AT YOUR CONVENIENCE  
THE CURATED AMENITIES BLEND  
WELL-BEING, COMFORT AND  
LEISURE.

Balancing relaxation and creative inspiration  
with a vibrant and social community. All within  
an elegant and serene environment.





A modern sky terrace with two circular plunge pools, lounge chairs, and a view of a city skyline at dusk. The terrace is illuminated with warm lights, and the city skyline is visible in the background.

*A serene retreat with breathtaking vistas*

## SKY TERRACE WITH PLUNGE POOLS

Perched on the 31st floor, the Sky Experience is an exclusive, access-controlled sanctuary, offering a refined retreat high above the city.









*An elevated  
sanctuary of serenity*

# INFINITY POOL

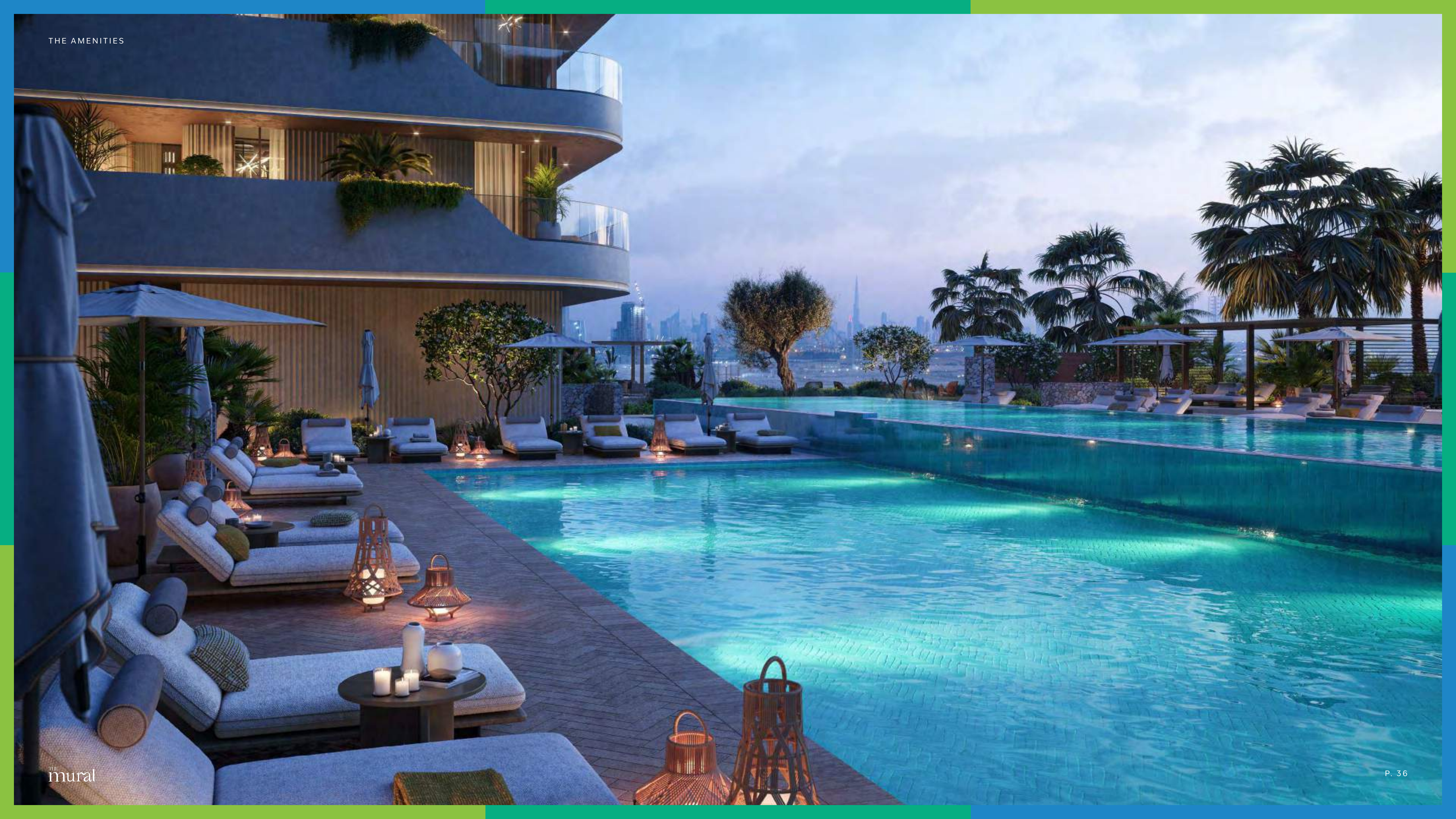
## WHERE SKY AND WATER BECOME ONE

ELEGANT SEATING AREAS AND STYLISH BARS  
COMPLETE THE EXPERIENCE, OFFERING  
UNMATCHED VISTAS OF THE LUSH FOREST  
AND THE ICONIC BURJ KHALIFA.

The podium amenities floor offers two stunning pools,  
a spacious lounging deck, a lush lawn, a versatile  
multipurpose area, a dedicated BBQ space, and more.  
Thoughtfully designed, these spaces provide the perfect  
setting for socializing while enjoying a seamless balance  
of relaxation and breathtaking panoramic views.









*Sophisticated haven*

## GRILL & CHILL BBQ AND OUTDOOR DINING

A SHADED RETREAT OF TRANQUILITY,  
WHERE DESIGN MEETS SERENE  
LUXURY AND ELEGANT COMFORT.

Host an unforgettable gathering at the dedicated BBQ area, featuring elegant open-air seating. Dine amidst nature at the exquisite bosque plaza, where culinary experiences meet serene surroundings. For ultimate relaxation, the outdoor lounge offers a tranquil retreat, enveloped by lush greenery, perfect for unwinding and socializing.











*A fitness sanctuary*

GYM AND  
FITNESS STUDIO

ENERGIZE AND RELAX YOUR BODY  
AND MIND AGAINST THE MOST  
BEAUTIFUL VISTA.

A waterfront fitness sanctuary designed for  
peak performance and relaxation. Offering  
state-of-the-art cardio and weight training,  
alongside a serene yoga and Pilates space—  
enhancing body and mind against the endless  
sea.





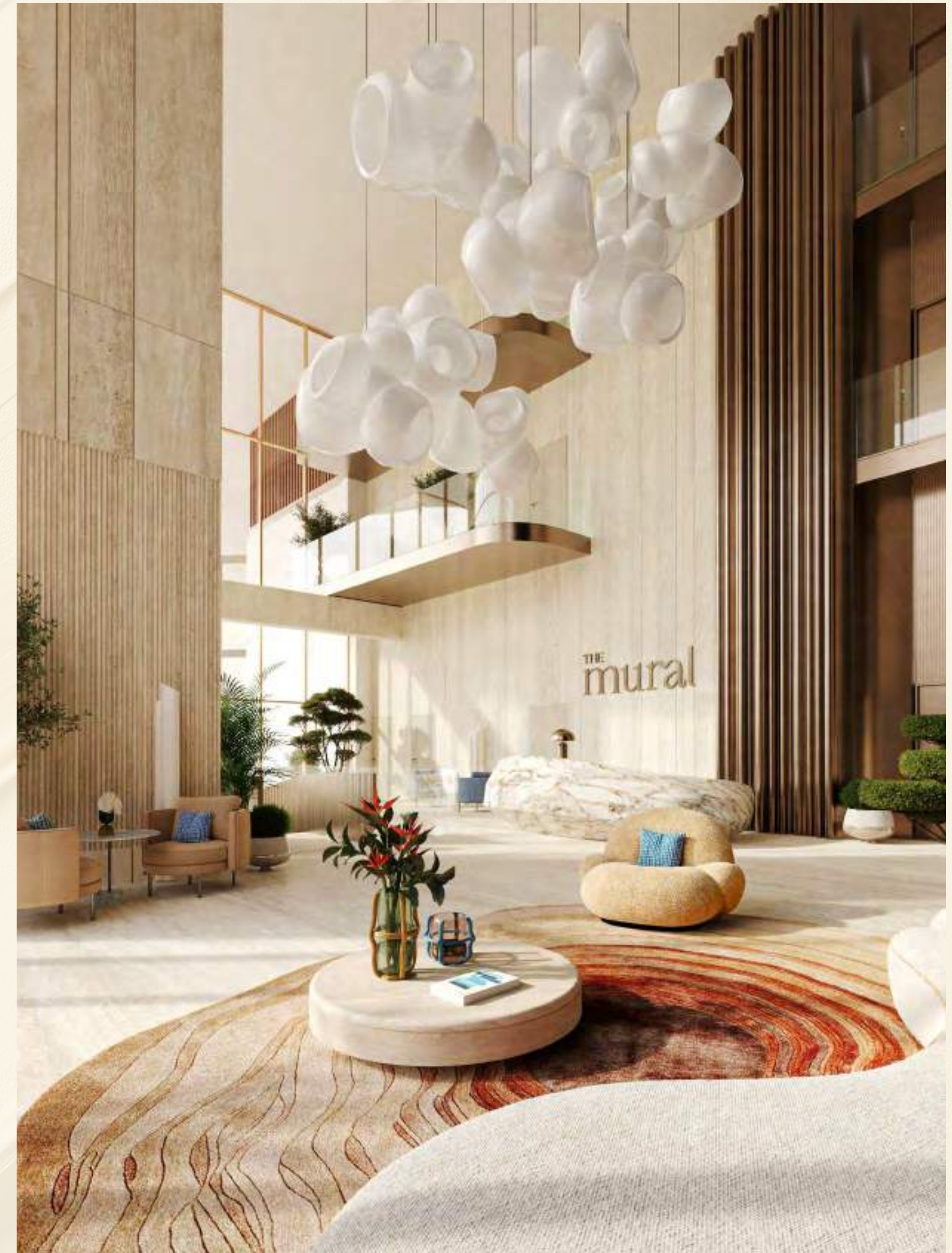


*A grand entrance  
designed for exclusivity*

## DEDICATED CONCIERGE & LOBBY

A WATERFRONT FITNESS SANCTUARY,  
SEAMLESSLY BLENDING PERFORMANCE  
AND RELAXATION WITH STATE-OF-THE-ART  
TRAINING AND SERENE YOGA SPACES

Inside, the elegantly designed lobby sets the tone  
for sophisticated living—thoughtfully designed lounge  
areas invite you to unwind in style, with soft lighting  
and natural accents enhancing the sense of warmth  
and exclusivity. Here every arrival is an experience, and  
every detail embodies The Mural's timeless vision of  
luxury.









*Creating enriching experiences*

# ADDITIONAL AMENITIES

ENHANCE YOUR LIFESTYLE WITH PREMIUM AMENITIES AND EXCEPTIONAL SERVICE,  
THOUGHTFULLY DESIGNED FOR RELAXATION AND INDULGENCE.



SUNSET DECKS  
SUNRISE TERRACE



OUTDOOR LOUNGE  
SUNSET AMPHITHEATRE  
OUTDOOR EVENT SPACE  
TEA PAVILLION



CHEF'S KITCHEN



GAME AREA  
KIDS PLAY AREA



OUTDOOR CO-WORKING  
SPACES  
GARDEN SEATING /  
WORKING ALCOVE



OUTDOOR GYM  
OUTDOOR YOGA SPACES  
INDOOR CHANGING FACILITIES  
OUTDOOR SHOWERS



GATHERING LAWN  
GATHERING PAVILLION



CONCIERGE & LOBBY











CHAPTER 5

# *The Developer*

BEYOND



*About the developer*

# DESIGNING SPACES THAT ENRICH EVERYDAY MOMENTS

BEYOND IS A NEW PREMIUM REAL ESTATE BRAND UNDER OMNIYAT GROUP, SPECIALIZING IN WIDER LUXURY MARKETS AND CREATING HOMES THAT BLEND INNOVATION, NATURE, AND LUXURY.

Our commitment to quality and design ensures that every development is more than just a place to live; it's an experience that redefines modern living. With a focus on delivering ontime, thoughtfully designed homes, we provide spaces that resonate with the personal values of our residents, enhancing their quality of life.

From lush landscapes to state-of-the-art technology, BEYOND offers a lifestyle where every detail has been curated to provide unparalleled comfort, convenience, and well-being. Our mission is to go beyond expectations and deliver homes that inspire, uplift, and resonate with modern urban values.



# THE mural

BY BEYOND

FOR MORE INFORMATION PLEASE CONTACT

**AFS**  
**REAL ESTATE**

Smarter Investments, Stronger Future

☎ +971 55 476 7630  
☎ +971 4 368 7878  
✉ info@afsrealestate.com  
🌐 www.afsrealestate.com

**db**

**DUBRICKS**

POSSIBILITIES ARE LIMITLESS

☎ +971 50 674 2020  
☎ +971 4 368 7878  
✉ info@dubricks.com  
🌐 www.dubricks.com