

# VALO

DUBAI CREEK HARBOUR

---

FLOOR PLAN

---

**AFS**  
REAL ESTATE  
STAY AHEAD, INVEST SMART

**db**  
DUBRICKS  
POSSIBILITIES ARE LIMITLESS

EMAAR

# VALO

DUBAI CREEK HARBOUR

## 1 BEDROOM

LEVEL 2-19, 22-32      UNIT 04

SUITE AREA	688.14 SQ.FT.	63.93 SQ.M.
BALCONY AREA	63.61 SQ.FT.	5.91 SQ.M.
TOTAL AREA	751.75 SQ.FT.	69.84 SQ.M.

KEY PLAN LEVEL

2-19, 22-32



KEY SECTION



Disclaimer : All dimensions are in imperial and metric, and measured from finish to finish excluding construction tolerances. 2. All materials, dimensions, and drawings are approximate only. 3. Information is subject to change without notice, developer's absolute discretion. 4. Actual area may vary from the stated area. 5. Drawings not to scale. 6. All images used are for illustrative purposes only and do not represent the actual size, features, specifications, fittings, and furnishings. The developer reserves the right to make revisions / alterations, at it's absolute discretion, without any liability whatsoever.

EMAAI

# VALO

DUBAI CREEK HARBOUR

## 1 BEDROOM

### LEVEL 20 UNIT 04

SUITE AREA	688.89 SQ.FT.	64.00 SQ.M.
BALCONY AREA	62.86 SQ.FT.	5.84 SQ.M.
TOTAL AREA	751.75 SQ.FT.	69.84 SQ.M.

### LEVEL 21 UNIT 04

SUITE AREA	688.89 SQ.FT.	64.00 SQ.M.
BALCONY AREA	62.65 SQ.FT.	5.82 SQ.M.
TOTAL AREA	751.54 SQ.FT.	69.82 SQ.M.

### KEY PLAN LEVEL 20 & 21



### KEY SECTION



Disclaimer : All dimensions are in imperial and metric, and measured from finish to finish excluding construction tolerances. 2. All materials, dimensions, and drawings are approximate only. 3. Information is subject to change without notice, developer's absolute discretion. 4. Actual area may vary from the stated area. 5. Drawings not to scale. 6. All images used are for illustrative purposes only and do not represent the actual size, features, specifications, fittings, and furnishings. The developer reserves the right to make revisions / alterations, at it's absolute discretion, without any liability whatsoever.

EMAAR

# VALO

DUBAI CREEK HARBOUR

## 1 BEDROOM

LEVEL 2-19, 22-32 UNIT 07

SUITE AREA	689.86 SQ.FT.	64.09 SQ.M.
BALCONY AREA	61.89 SQ.FT.	5.75 SQ.M.
TOTAL AREA	751.75 SQ.FT.	69.84 SQ.M.

KEY PLAN LEVEL

2-19, 22-32



KEY SECTION



Disclaimer : All dimensions are in imperial and metric, and measured from finish to finish excluding construction tolerances. 2. All materials, dimensions, and drawings are approximate only. 3. Information is subject to change without notice, developer's absolute discretion. 4. Actual area may vary from the stated area. 5. Drawings not to scale. 6. All images used are for illustrative purposes only and do not represent the actual size, features, specifications, fittings, and furnishings. The developer reserves the right to make revisions / alterations, at it's absolute discretion, without any liability whatsoever.

EMAAI

# VALO

DUBAI CREEK HARBOUR

## 1 BEDROOM

LEVEL 2-19, 22-32 UNIT 06

SUITE AREA	698.25 SQ.FT.	64.87 SQ.M.
BALCONY AREA	72.98 SQ.FT.	6.78 SQ.M.
TOTAL AREA	771.23 SQ.FT.	71.65 SQ.M.

KEY PLAN LEVEL

2-19, 22-32



KEY SECTION



Disclaimer : All dimensions are in imperial and metric, and measured from finish to finish excluding construction tolerances. 2. All materials, dimensions, and drawings are approximate only. 3. Information is subject to change without notice, developer's absolute discretion. 4. Actual area may vary from the stated area. 5. Drawings not to scale. 6. All images used are for illustrative purposes only and do not represent the actual size, features, specifications, fittings, and furnishings. The developer reserves the right to make revisions / alterations, at it's absolute discretion, without any liability whatsoever.

EMAAR

# VALO

DUBAI CREEK HARBOUR

## 1 BEDROOM

LEVEL 2-19, 22-32 UNIT 05

SUITE AREA	698.25 SQ.FT.	64.87 SQ.M.
BALCONY AREA	72.98 SQ.FT.	6.78 SQ.M.
TOTAL AREA	771.23 SQ.FT.	71.65 SQ.M.

KEY PLAN LEVEL

2-19, 22-32



KEY SECTION



Disclaimer : All dimensions are in imperial and metric, and measured from finish to finish excluding construction tolerances. 2. All materials, dimensions, and drawings are approximate only. 3. Information is subject to change without notice, developer's absolute discretion. 4. Actual area may vary from the stated area. 5. Drawings not to scale. 6. All images used are for illustrative purposes only and do not represent the actual size, features, specifications, fittings, and furnishings. The developer reserves the right to make revisions / alterations, at its absolute discretion, without any liability whatsoever.

EMAAI

# VALO

DUBAI CREEK HARBOUR

## 1 BEDROOM

LEVEL 20 UNIT 05

SUITE AREA	697.50 SQ.FT.	64.80 SQ.M.
BALCONY AREA	73.84 SQ.FT.	6.86 SQ.M.
TOTAL AREA	771.34 SQ.FT.	71.66 SQ.M.

LEVEL 21 UNIT 05

SUITE AREA	696.64 SQ.FT.	64.72 SQ.M.
BALCONY AREA	74.49 SQ.FT.	6.92 SQ.M.
TOTAL AREA	771.13 SQ.FT.	71.64 SQ.M.

KEY PLAN LEVEL  
20 & 21



KEY SECTION



Disclaimer : All dimensions are in imperial and metric, and measured from finish to finish excluding construction tolerances. 2. All materials, dimensions, and drawings are approximate only. 3. Information is subject to change without notice, developer's absolute discretion. 4. Actual area may vary from the stated area. 5. Drawings not to scale. 6. All images used are for illustrative purposes only and do not represent the actual size, features, specifications, fittings, and furnishings. The developer reserves the right to make revisions / alterations, at it's absolute discretion, without any liability whatsoever.

EMAAR

# VALO

DUBAI CREEK HARBOUR

## 1 BEDROOM

PODIUM 1 UNIT 02

SUITE AREA	679.74 SQ.FT.	63.15 SQ.M.
BALCONY AREA	117.00 SQ.FT.	10.87 SQ.M.
TOTAL AREA	796.74 SQ.FT.	74.02 SQ.M.

KEY PLAN LEVEL  
PODIUM 1



KEY SECTION



Disclaimer : All dimensions are in imperial and metric, and measured from finish to finish excluding construction tolerances. 2. All materials, dimensions, and drawings are approximate only. 3. Information is subject to change without notice, developer's absolute discretion. 4. Actual area may vary from the stated area. 5. Drawings not to scale. 6. All images used are for illustrative purposes only and do not represent the actual size, features, specifications, fittings, and furnishings. The developer reserves the right to make revisions / alterations, at it's absolute discretion, without any liability whatsoever.

EMAAI



# VALO

DUBAI CREEK HARBOUR

## 1 BEDROOM

PODIUM 2 UNIT 03

SUITE AREA	679.10 SQ.FT.	63.09 SQ.M.
BALCONY AREA	117.00 SQ.FT.	10.87 SQ.M.
TOTAL AREA	796.10 SQ.FT.	73.96 SQ.M.

KEY PLAN LEVEL  
PODIUM 2



KEY SECTION



Disclaimer : All dimensions are in imperial and metric, and measured from finish to finish excluding construction tolerances. 2. All materials, dimensions, and drawings are approximate only. 3. Information is subject to change without notice, developer's absolute discretion. 4. Actual area may vary from the stated area. 5. Drawings not to scale. 6. All images used are for illustrative purposes only and do not represent the actual size, features, specifications, fittings, and furnishings. The developer reserves the right to make revisions / alterations, at it's absolute discretion, without any liability whatsoever.

EMAAI

# VALO

DUBAI CREEK HARBOUR

## 2 BEDROOM

PODIUM 1 UNIT 01

SUITE AREA	1016.97 SQ.FT.	94.48 SQ.M.
BALCONY AREA	66.95 SQ.FT.	6.22 SQ.M.
TOTAL AREA	1083.92 SQ.FT.	100.70 SQ.M.

KEY PLAN LEVEL  
PODIUM 1



KEY SECTION



Disclaimer : All dimensions are in imperial and metric, and measured from finish to finish excluding construction tolerances. 2. All materials, dimensions, and drawings are approximate only. 3. Information is subject to change without notice, developer's absolute discretion. 4. Actual area may vary from the stated area. 5. Drawings not to scale. 6. All images used are for illustrative purposes only and do not represent the actual size, features, specifications, fittings, and furnishings. The developer reserves the right to make revisions / alterations, at it's absolute discretion, without any liability whatsoever.

EMAAI

# VALO

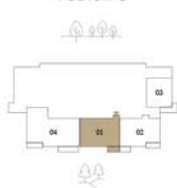
DUBAI CREEK HARBOUR

## 2 BEDROOM

PODIUM 2 UNIT 01

SUITE AREA	1016.65 SQ.FT.	94.45 SQ.M.
BALCONY AREA	65.98 SQ.FT.	6.13 SQ.M.
TOTAL AREA	1082.63 SQ.FT.	100.58 SQ.M.

KEY PLAN LEVEL  
PODIUM 2



KEY SECTION



Disclaimer : All dimensions are in imperial and metric, and measured from finish to finish excluding construction tolerances. 2. All materials, dimensions, and drawings are approximate only. 3. Information is subject to change without notice, developer's absolute discretion. 4. Actual area may vary from the stated area. 5. Drawings not to scale. 6. All images used are for illustrative purposes only and do not represent the actual size, features, specifications, fittings, and furnishings. The developer reserves the right to make revisions / alterations, at it's absolute discretion, without any liability whatsoever.

EMAAI

# VALO

DUBAI CREEK HARBOUR

## 2 BEDROOM

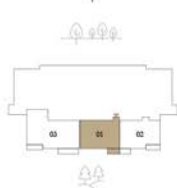
LEVEL 1

UNIT 01

SUITE AREA	1017.73 SQ.FT.	94.55 SQ.M.
BALCONY AREA	53.71 SQ.FT.	4.99 SQ.M.
TOTAL AREA	1071.44 SQ.FT.	99.54 SQ.M.

KEY PLAN LEVEL

1



KEY SECTION



Disclaimer : All dimensions are in imperial and metric, and measured from finish to finish excluding construction tolerances. 2. All materials, dimensions, and drawings are approximate only. 3. Information is subject to change without notice, developer's absolute discretion. 4. Actual area may vary from the stated area. 5. Drawings not to scale. 6. All images used are for illustrative purposes only and do not represent the actual size, features, specifications, fittings, and furnishings. The developer reserves the right to make revisions / alterations, at it's absolute discretion, without any liability whatsoever.

EMAAI

# VALO

DUBAI CREEK HARBOUR

## 2 BEDROOM

LEVEL 2-19, 22-32 UNIT 01

SUITE AREA	1018.59 SQ.FT.	94.63 SQ.M.
BALCONY AREA	66.31 SQ.FT.	6.16 SQ.M.
TOTAL AREA	1084.90 SQ.FT.	100.79 SQ.M.

### KEY PLAN LEVEL

2-19, 22-32



### KEY SECTION



Disclaimer : All dimensions are in imperial and metric, and measured from finish to finish excluding construction tolerances. 2. All materials, dimensions, and drawings are approximate only. 3. Information is subject to change without notice, developer's absolute discretion. 4. Actual area may vary from the stated area. 5. Drawings not to scale. 6. All images used are for illustrative purposes only and do not represent the actual size, features, specifications, fittings, and furnishings. The developer reserves the right to make revisions / alterations, at its absolute discretion, without any liability whatsoever.

EMAAI

## 2 BEDROOM

### LEVEL 20 UNIT 01

SUITE AREA	1016.87 SQ.FT.	94.47 SQ.M.
BALCONY AREA	68.03 SQ.FT.	6.32 SQ.M.
TOTAL AREA	1084.90 SQ.FT.	100.79 SQ.M.

### LEVEL 21 UNIT 01

SUITE AREA	1017.73 SQ.FT.	94.55 SQ.M.
BALCONY AREA	66.95 SQ.FT.	6.22 SQ.M.
TOTAL AREA	1084.68 SQ.FT.	100.77 SQ.M.

### KEY PLAN LEVEL 20 & 21



### KEY SECTION



Disclaimer : All dimensions are in imperial and metric, and measured from finish to finish excluding construction tolerances. 2. All materials, dimensions, and drawings are approximate only. 3. Information is subject to change without notice, developer's absolute discretion. 4. Actual area may vary from the stated area. 5. Drawings not to scale. 6. All images used are for illustrative purposes only and do not represent the actual size, features, specifications, fittings, and furnishings. The developer reserves the right to make revisions / alterations, at it's absolute discretion, without any liability whatsoever.

# VALO

DUBAI CREEK HARBOUR

## 2 BEDROOM

PODIUM 2 UNIT 02

SUITE AREA	1059.60 SQ.FT.	98.44 SQ.M.
BALCONY AREA	135.52 SQ.FT.	12.59 SQ.M.
TOTAL AREA	1195.12 SQ.FT.	111.03 SQ.M.

KEY PLAN LEVEL  
PODIUM 2



KEY SECTION



Disclaimer : All dimensions are in imperial and metric, and measured from finish to finish excluding construction tolerances. 2. All materials, dimensions, and drawings are approximate only. 3. Information is subject to change without notice, developer's absolute discretion. 4. Actual area may vary from the stated area. 5. Drawings not to scale. 6. All images used are for illustrative purposes only and do not represent the actual size, features, specifications, fittings, and furnishings. The developer reserves the right to make revisions / alterations, at it's absolute discretion, without any liability whatsoever.

EMAAI

# VALO

DUBAI CREEK HARBOUR

## 2 BEDROOM

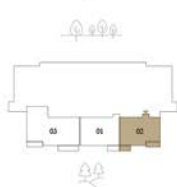
LEVEL 1

UNIT 02

SUITE AREA	1060.14 SQ.FT.	98.49 SQ.M.
BALCONY AREA	126.05 SQ.FT.	11.71 SQ.M.
TOTAL AREA	1186.19 SQ.FT.	110.20 SQ.M.

KEY PLAN LEVEL

1



KEY SECTION



Disclaimer : All dimensions are in imperial and metric, and measured from finish to finish excluding construction tolerances. 2. All materials, dimensions, and drawings are approximate only. 3. Information is subject to change without notice, developer's absolute discretion. 4. Actual area may vary from the stated area. 5. Drawings not to scale. 6. All images used are for illustrative purposes only and do not represent the actual size, features, specifications, fittings, and furnishings. The developer reserves the right to make revisions / alterations, at it's absolute discretion, without any liability whatsoever.

EMAAI



# VALO

DUBAI CREEK HARBOUR

## 2 BEDROOM

LEVEL 2-19, 22-32 UNIT 02

SUITE AREA	1060.68 SQ.FT.	98.54 SQ.M.
BALCONY AREA	203.11 SQ.FT.	18.87 SQ.M.
TOTAL AREA	1263.79 SQ.FT.	117.41 SQ.M.

KEY PLAN LEVEL

2-19, 22-32



KEY SECTION



Disclaimer : All dimensions are in imperial and metric, and measured from finish to finish excluding construction tolerances. 2. All materials, dimensions, and drawings are approximate only. 3. Information is subject to change without notice, developer's absolute discretion. 4. Actual area may vary from the stated area. 5. Drawings not to scale. 6. All images used are for illustrative purposes only and do not represent the actual size, features, specifications, fittings, and furnishings. The developer reserves the right to make revisions / alterations, at it's absolute discretion, without any liability whatsoever.

EMAAI

## 2 BEDROOM

### LEVEL 20 UNIT 02

SUITE AREA	1061.00 SQ.FT.	98.57 SQ.M.
BALCONY AREA	202.36 SQ.FT.	18.80 SQ.M.
TOTAL AREA	1263.36 SQ.FT.	117.37 SQ.M.

### LEVEL 21 UNIT 02

SUITE AREA	1060.14 SQ.FT.	98.49 SQ.M.
BALCONY AREA	193.97 SQ.FT.	18.02 SQ.M.
TOTAL AREA	1254.11 SQ.FT.	116.51 SQ.M.

### KEY PLAN LEVEL 20 & 21



### KEY SECTION



Disclaimer : All dimensions are in imperial and metric, and measured from finish to finish excluding construction tolerances. 2. All materials, dimensions, and drawings are approximate only. 3. Information is subject to change without notice, developer's absolute discretion. 4. Actual area may vary from the stated area. 5. Drawings not to scale. 6. All images used are for illustrative purposes only and do not represent the actual size, features, specifications, fittings, and furnishings. The developer reserves the right to make revisions / alterations, at it's absolute discretion, without any liability whatsoever.

# VALO

DUBAI CREEK HARBOUR

## 2 BEDROOM

LEVEL 2-19, 22-32

UNIT 03

SUITE AREA	963.59 SQ.FT.	89.52 SQ.M.
BALCONY AREA	116.14 SQ.FT.	10.79 SQ.M.
TOTAL AREA	1079.73 SQ.FT.	100.31 SQ.M.

### KEY PLAN LEVEL

2-19, 22-32



### KEY SECTION



Disclaimer : All dimensions are in imperial and metric, and measured from finish to finish excluding construction tolerances. 2. All materials, dimensions, and drawings are approximate only. 3. Information is subject to change without notice, developer's absolute discretion. 4. Actual area may vary from the stated area. 5. Drawings not to scale. 6. All images used are for illustrative purposes only and do not represent the actual size, features, specifications, fittings, and furnishings. The developer reserves the right to make revisions / alterations, at it's absolute discretion, without any liability whatsoever.

EMAAI

## 2 BEDROOM

LEVEL 20 UNIT 03

SUITE AREA	963.59 SQ.FT.	89.52 SQ.M.
BALCONY AREA	116.14 SQ.FT.	10.79 SQ.M.
TOTAL AREA	1079.73 SQ.FT.	100.31 SQ.M.

LEVEL 21 UNIT 03

SUITE AREA	963.59 SQ.FT.	89.52 SQ.M.
BALCONY AREA	108.28 SQ.FT.	10.06 SQ.M.
TOTAL AREA	1071.87 SQ.FT.	99.58 SQ.M.

KEY PLAN LEVEL  
20 & 21



KEY SECTION



# VALO

DUBAI CREEK HARBOUR

## 2 BEDROOM

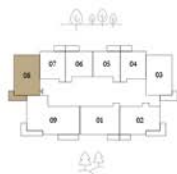
LEVEL 2-19, 22-32

UNIT 08

SUITE AREA	967.03 SQ.FT.	89.84 SQ.M.
BALCONY AREA	120.99 SQ.FT.	11.24 SQ.M.
TOTAL AREA	1088.02 SQ.FT.	101.08 SQ.M.

### KEY PLAN LEVEL

2-19, 22-32



### KEY SECTION



Disclaimer : All dimensions are in imperial and metric, and measured from finish to finish excluding construction tolerances. 2. All materials, dimensions, and drawings are approximate only. 3. Information is subject to change without notice, developer's absolute discretion. 4. Actual area may vary from the stated area. 5. Drawings not to scale. 6. All images used are for illustrative purposes only and do not represent the actual size, features, specifications, fittings, and furnishings. The developer reserves the right to make revisions / alterations, at it's absolute discretion, without any liability whatsoever.

EMAAI

## 2 BEDROOM

### LEVEL 20 UNIT 06

SUITE AREA	966.28 SQ.FT.	89.77 SQ.M.
BALCONY AREA	122.28 SQ.FT.	11.36 SQ.M.
TOTAL AREA	1088.56 SQ.FT.	101.13 SQ.M.

### LEVEL 21 UNIT 06

SUITE AREA	967.14 SQ.FT.	89.85 SQ.M.
BALCONY AREA	113.45 SQ.FT.	10.54 SQ.M.
TOTAL AREA	1080.59 SQ.FT.	100.39 SQ.M.

### KEY PLAN LEVEL 20 & 21



### KEY SECTION



Disclaimer : All dimensions are in imperial and metric, and measured from finish to finish excluding construction tolerances. 2. All materials, dimensions, and drawings are approximate only. 3. Information is subject to change without notice, developer's absolute discretion. 4. Actual area may vary from the stated area. 5. Drawings not to scale. 6. All images used are for illustrative purposes only and do not represent the actual size, features, specifications, fittings, and furnishings. The developer reserves the right to make revisions / alterations, at it's absolute discretion, without any liability whatsoever.

# VALO

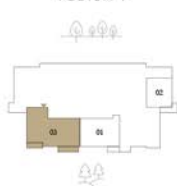
DUBAI CREEK HARBOUR

## 3 BEDROOM

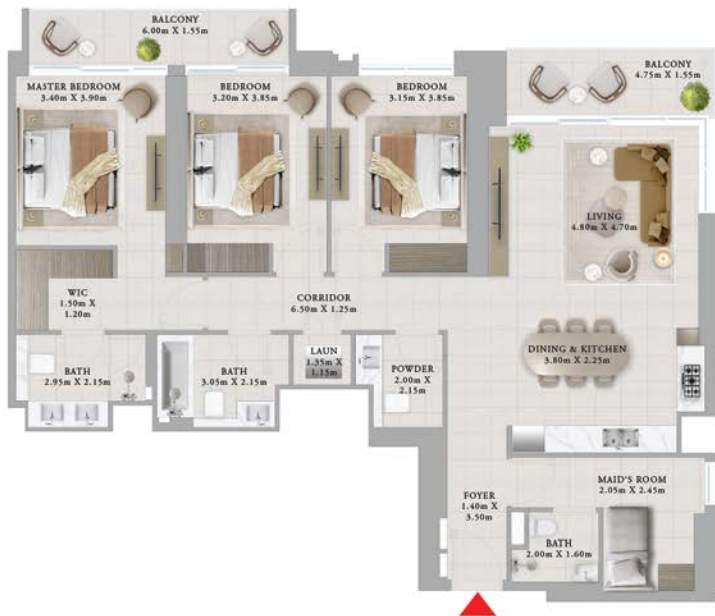
PODIUM 1 UNIT 03

SUITE AREA	1605.01 SQ.FT.	149.11 SQ.M.
BALCONY AREA	204.84 SQ.FT.	19.03 SQ.M.
TOTAL AREA	1809.85 SQ.FT.	168.14 SQ.M.

KEY PLAN LEVEL  
PODIUM 1



KEY SECTION



Disclaimer : All dimensions are in imperial and metric, and measured from finish to finish excluding construction tolerances. 2. All materials, dimensions, and drawings are approximate only. 3. Information is subject to change without notice, developer's absolute discretion. 4. Actual area may vary from the stated area. 5. Drawings not to scale. 6. All images used are for illustrative purposes only and do not represent the actual size, features, specifications, fittings, and furnishings. The developer reserves the right to make revisions / alterations, at it's absolute discretion, without any liability whatsoever.

EMAAI

# VALO

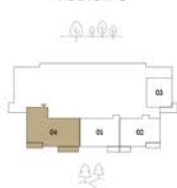
DUBAI CREEK HARBOUR

## 3 BEDROOM

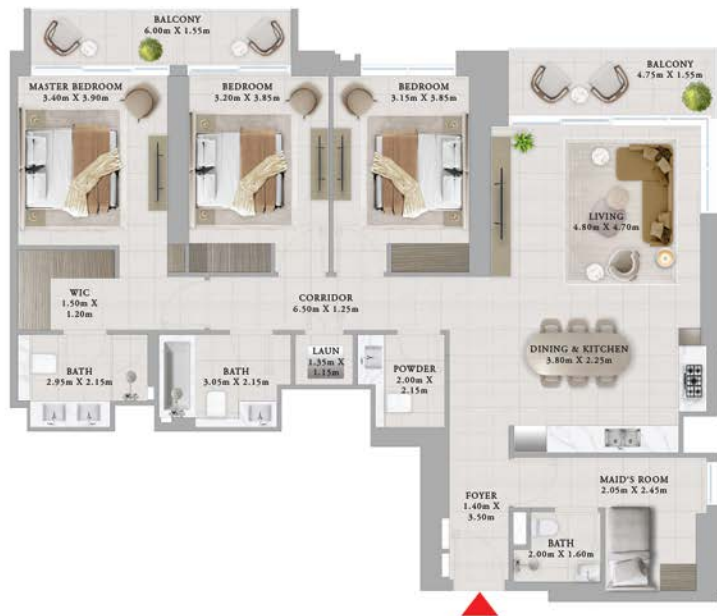
PODIUM 2 UNIT 04

SUITE AREA	1603.72 SQ.FT.	148.99 SQ.M.
BALCONY AREA	206.13 SQ.FT.	19.15 SQ.M.
TOTAL AREA	1809.85 SQ.FT.	168.14 SQ.M.

KEY PLAN LEVEL  
PODIUM 2



KEY SECTION



Disclaimer : All dimensions are in imperial and metric, and measured from finish to finish excluding construction tolerances. 2. All materials, dimensions, and drawings are approximate only. 3. Information is subject to change without notice, developer's absolute discretion. 4. Actual area may vary from the stated area. 5. Drawings not to scale. 6. All images used are for illustrative purposes only and do not represent the actual size, features, specifications, fittings, and furnishings. The developer reserves the right to make revisions / alterations, at it's absolute discretion, without any liability whatsoever.

EMAAI



# VALO

DUBAI CREEK HARBOUR

## 3 BEDROOM

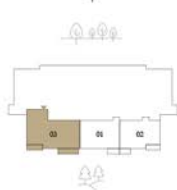
LEVEL 1

UNIT 03

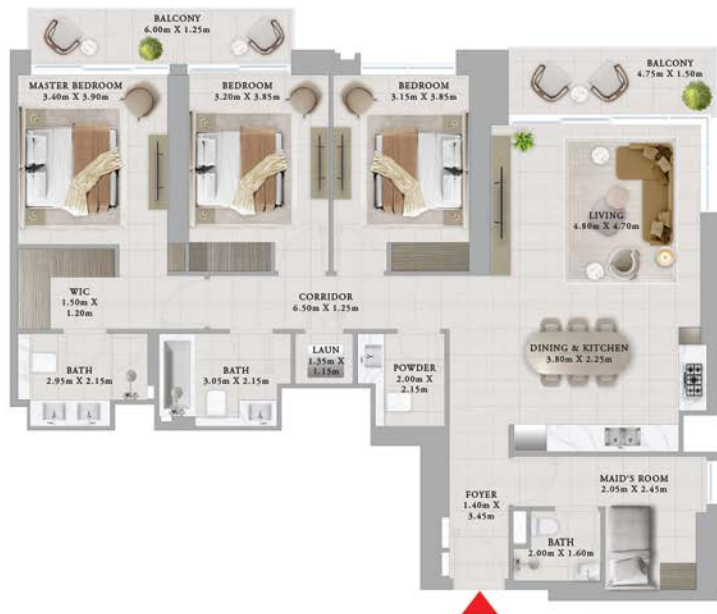
SUITE AREA	1607.05 SQ.FT.	149.30 SQ.M.
BALCONY AREA	178.90 SQ.FT.	16.62 SQ.M.
TOTAL AREA	1785.95 SQ.FT.	165.92 SQ.M.

KEY PLAN LEVEL

1



KEY SECTION



Disclaimer : All dimensions are in imperial and metric, and measured from finish to finish excluding construction tolerances. 2. All materials, dimensions, and drawings are approximate only. 3. Information is subject to change without notice, developer's absolute discretion. 4. Actual area may vary from the stated area. 5. Drawings not to scale. 6. All images used are for illustrative purposes only and do not represent the actual size, features, specifications, fittings, and furnishings. The developer reserves the right to make revisions / alterations, at it's absolute discretion, without any liability whatsoever.

EMAAI

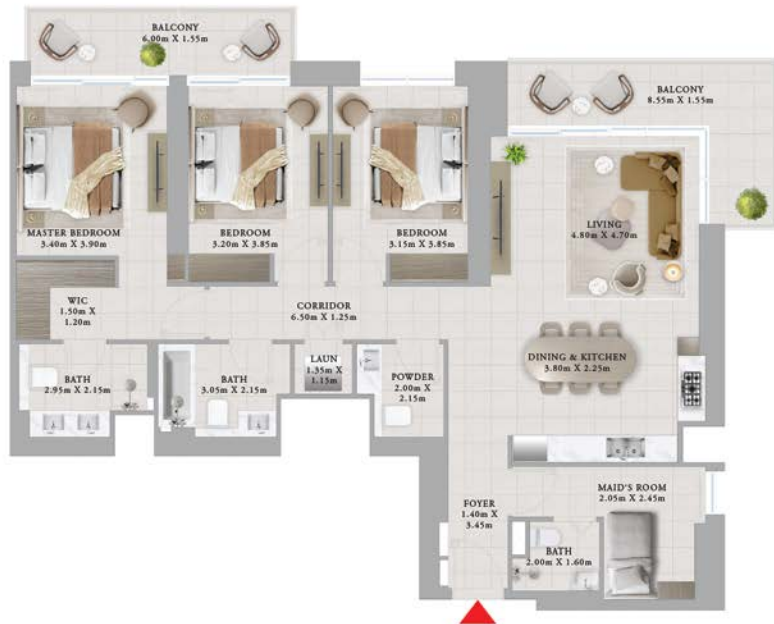
# VALO

DUBAI CREEK HARBOUR

## 3 BEDROOM

LEVEL 2-19, 22-32 UNIT 09

SUITE AREA	1606.94 SQ.FT.	149.29 SQ.M.
BALCONY AREA	269.42 SQ.FT.	25.03 SQ.M.
TOTAL AREA	1876.36 SQ.FT.	174.32 SQ.M.



KEY PLAN LEVEL

2-19, 22-32

KEY SECTION



Disclaimer : All dimensions are in imperial and metric, and measured from finish to finish excluding construction tolerances. 2. All materials, dimensions, and drawings are approximate only. 3. Information is subject to change without notice, developer's absolute discretion. 4. Actual area may vary from the stated area. 5. Drawings not to scale. 6. All images used are for illustrative purposes only and do not represent the actual size, features, specifications, fittings, and furnishings. The developer reserves the right to make revisions / alterations, at it's absolute discretion, without any liability whatsoever.

EMAAI

# VALO

DUBAI CREEK HARBOUR

## 3 BEDROOM

LEVEL 20 UNIT 07

SUITE AREA	1605.76 SQ.FT.	149.18 SQ.M.
BALCONY AREA	270.17 SQ.FT.	25.10 SQ.M.
TOTAL AREA	1875.93 SQ.FT.	174.28 SQ.M.

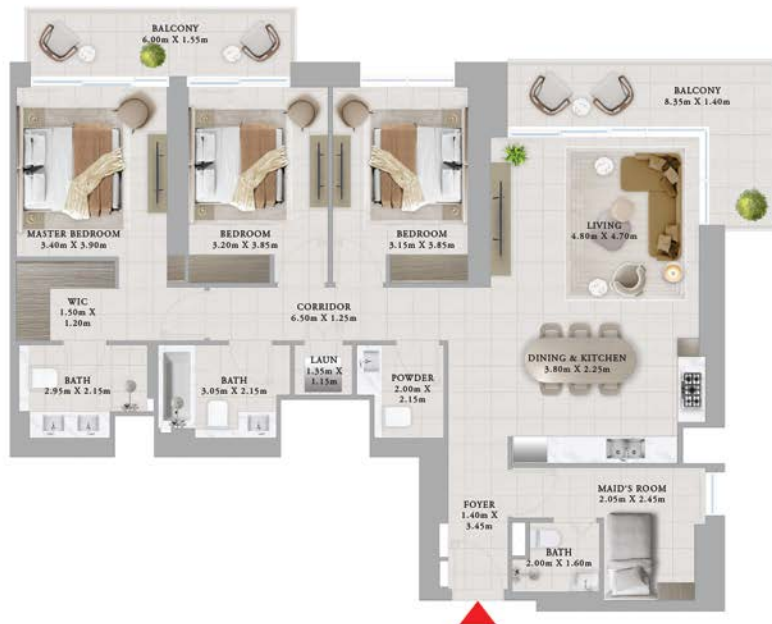
LEVEL 21 UNIT 07

SUITE AREA	1607.48 SQ.FT.	149.34 SQ.M.
BALCONY AREA	258.66 SQ.FT.	24.03 SQ.M.
TOTAL AREA	1866.14 SQ.FT.	173.37 SQ.M.

KEY PLAN LEVEL  
20 & 21



KEY SECTION



Disclaimer : All dimensions are in imperial and metric, and measured from finish to finish excluding construction tolerances. 2. All materials, dimensions, and drawings are approximate only. 3. Information is subject to change without notice, developer's absolute discretion. 4. Actual area may vary from the stated area. 5. Drawings not to scale. 6. All images used are for illustrative purposes only and do not represent the actual size, features, specifications, fittings, and furnishings. The developer reserves the right to make revisions / alterations, at it's absolute discretion, without any liability whatsoever.

EMAAI

## 3 BEDROOM TH

	TH	UNIT 01
SUITE AREA	1956.34 SQ.FT.	181.75 SQ.M.
BALCONY AREA	89.77 SQ.FT.	8.34 SQ.M.
TOTAL AREA	2046.11 SQ.FT.	190.09 SQ.M.

	TH	UNIT 03 & 05
SUITE AREA	1956.34 SQ.FT.	181.75 SQ.M.
BALCONY AREA	85.14 SQ.FT.	7.91 SQ.M.
TOTAL AREA	2041.48 SQ.FT.	189.66 SQ.M.

KEY PLAN LEVEL  
P1 & P2



KEY SECTION



LOWER FLOOR



UPPER FLOOR

# VALO

DUBAI CREEK HARBOUR

## 3 BEDROOM TH

	TH	UNIT 02 & 04
SUITE AREA	1956.34 SQ.FT.	181.75 SQ.M.
BALCONY AREA	85.14 SQ.FT.	7.91 SQ.M.
TOTAL AREA	2041.48 SQ.FT.	189.66 SQ.M.

	TH	UNIT 06
SUITE AREA	1956.34 SQ.FT.	181.75 SQ.M.
BALCONY AREA	91.92 SQ.FT.	8.54 SQ.M.
TOTAL AREA	2048.26 SQ.FT.	190.29 SQ.M.

KEY PLAN LEVEL  
P1 & P2



KEY SECTION



LOWER FLOOR



UPPER FLOOR

Disclaimer : All dimensions are in imperial and metric, and measured from finish to finish excluding construction tolerances. 2. All materials, dimensions, and drawings are approximate only. 3. Information is subject to change without notice, developer's absolute discretion. 4. Actual area may vary from the stated area. 5. Drawings not to scale. 6. All images used are for illustrative purposes only and do not represent the actual size, features, specifications, fittings, and furnishings. The developer reserves the right to make revisions / alterations, at it's absolute discretion, without any liability whatsoever.

EMAAL

# VALO

DUBAI CREEK HARBOUR

FOR MORE INFORMATION PLEASE CONTACT

**AFS**  
**REAL ESTATE**

STAY AHEAD, INVEST SMART

☎ +971 55 476 7630  
☎ +971 4 368 7878  
✉ info@afsrealestate.com  
🌐 www.afsrealestate.com

**db**

**DUBRICKS**

POSSIBILITIES ARE LIMITLESS

☎ +971 50 674 2020  
☎ +971 4 368 7878  
✉ info@dubricks.com  
🌐 www.dubricks.com

EMAAR